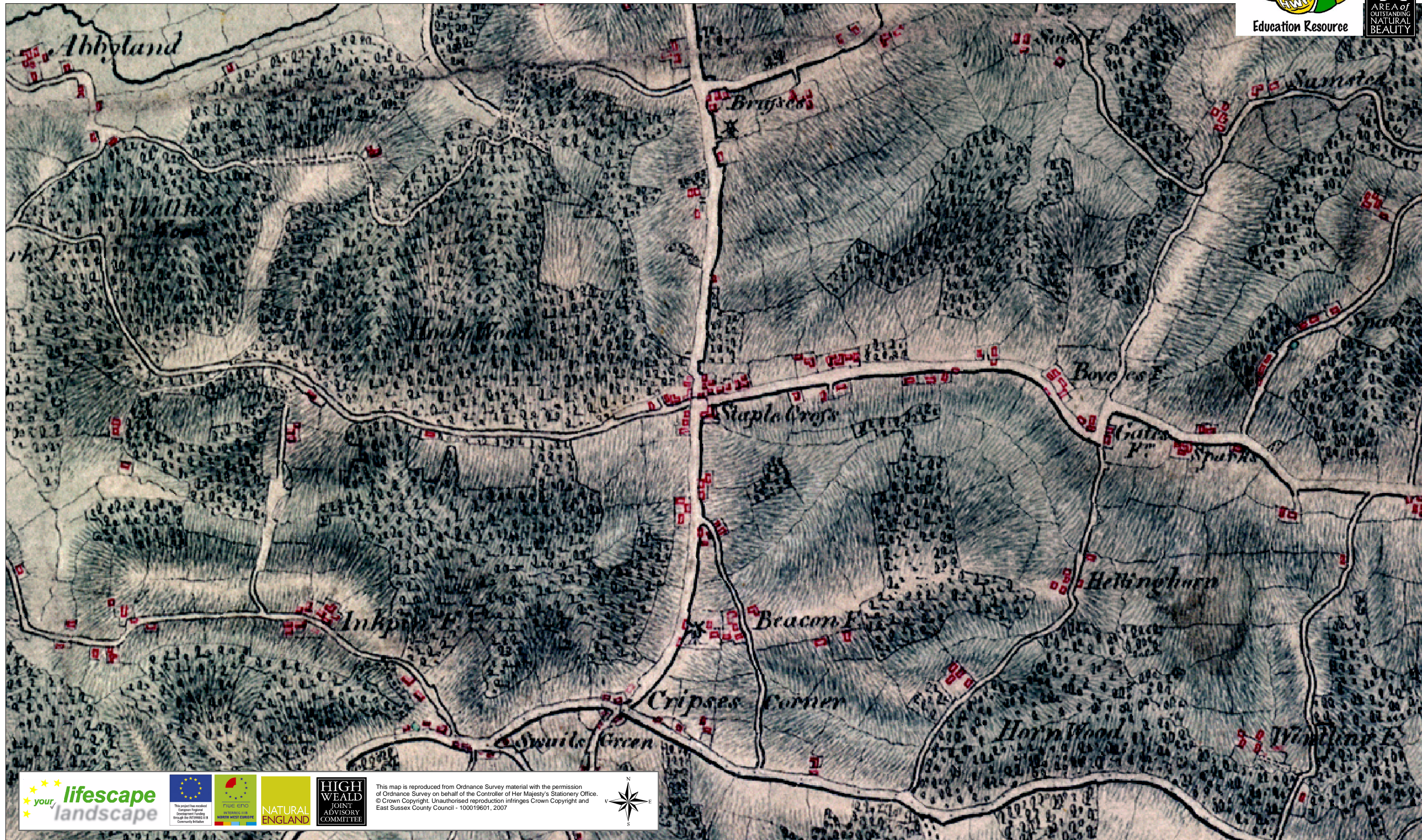


# Ordnance Survey - Surveyor's Draft (c.1800)



This map is reproduced from Ordnance Survey material with the permission of Ordnance Survey on behalf of the Controller of Her Majesty's Stationery Office. © Crown Copyright. Unauthorised reproduction infringes Crown Copyright and East Sussex County Council - 100019601, 2007

