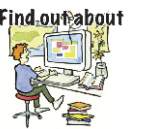


Historic Features and Habitats for St. Michael's Primary School



● St Michaels Primary School

Archaeology

- Finds
- 12th Century
- Neolithic
- Post medieval
- ◆ 'eld Place Names
- Iron Working Sites
- Water-powered
- Furnace or Forge
- Bloomery
- Rivers & Streams
- Ponds, Lakes, & Reservoirs
- Historic Farmsteads
- Historic Field Boundaries
- Wildflower Grassland
- Historic Routeways
- Ancient Woodland



Map Produced by the High Weald AONB Unit

www.highweald.org



This map is based upon or reproduced from Ordnance Survey material with the permission of Ordnance Survey on behalf of the Controller of Her Majesty's Stationery Office © Crown copyright. Unauthorised reproduction infringes Crown copyright and may lead to prosecution or civil proceedings.
 Kent County Council - 100019238 2010
 East Sussex County Council - 100019601 2010

