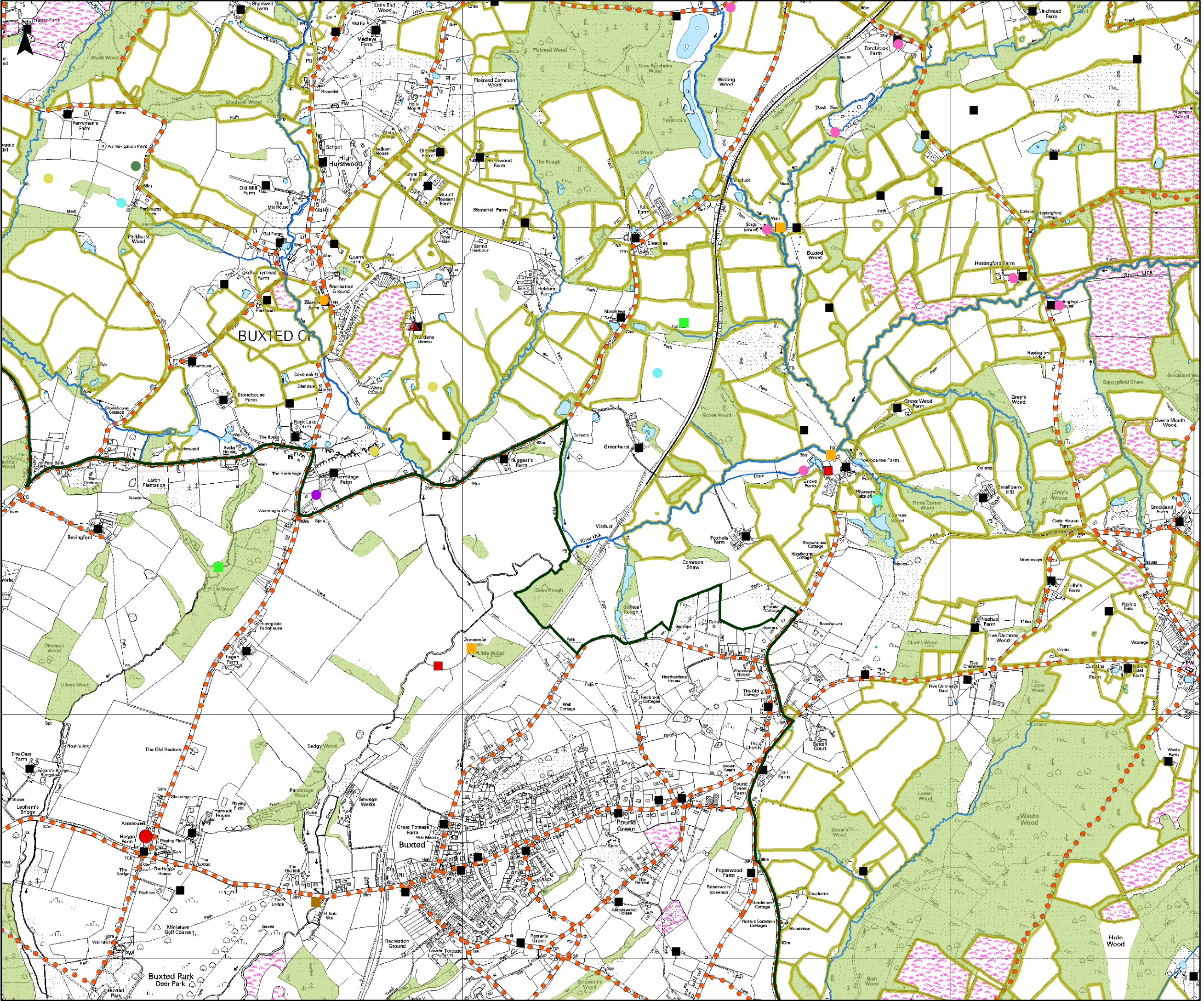


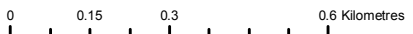
Historic Features and Habitats for Buxted CEP School



- Buxted CEP School
- Archaeology**
- Findings
- C15
- Roman
- medieval
- mesolithic
- neolithic
- prehistoric
- ▲ 'den Place Names
- Iron Working Sites
- Med unpowered (locate)
- Roman Ironworking Site
- Water-powered
- Furnace or Forge
- High Weald AONB Boundary
- Rivers & Streams
- Ponds, Lakes, & Reservoirs
- Historic Farmsteads
- Historic Field Boundaries
- Wildflower Grassland
- Historic Routeways
- Ancient Woodland



Map Produced by the High Weald AONB Unit
www.highweald.org



This map is based upon or reproduced from Ordnance Survey material with the permission of Ordnance Survey on behalf of the Controller of Her Majesty's Stationery Office © Crown copyright. Unauthorised reproduction infringes Crown copyright and may lead to prosecution or civil proceedings.
 Kent County Council - 100019238 2010
 East Sussex County Council - 100019601 2010