

The High Weald Area of Outstanding Natural Beauty (AONB) is an outstanding medieval landscape, protected for its historic character of: rolling hills draped with small irregular fields; abundant woods and hedges; scattered farmsteads; and sunken lanes. It covers parts of 4 counties: East Sussex, West Sussex, Kent and Surrey and has an area of 1,457 square kilometres (570 square miles).

High Weald Heroes is a primary school programme that encourages children to do the following actions:

Explore

the local countryside around your school
- there's nowhere else quite like it.



Take care of

your local environment as you walk. Remember to follow the Countryside Code. For more information, visit www.naturalengland.org.uk



Enjoy! yourself and have fun outdoors whatever the weather.



Find out about

the habitats you walk through - discover the story behind the landscape. To find out more go to the learning zone on www.highweald.org



Be proud of

your countryside. Tell other people about the special landscape around your school - even better, take them on your school's Welly Walk and show them!



Produced by the High Weald AONB Partnership with support from:



Walk Facts



Distance: 6.4 km / 4 miles

Time: 2.5 hours (depending on conditions, numbers and excluding stops)

Description: A walk with hills and stiles through farmland and woodland with one short section of road walking. The paths can get very muddy and slippery.



RISK ASSESSMENT - Points to consider

- Please use with an Ordnance Survey Explorer Map.
- Wear sturdy footwear or wellingtons, being aware of uneven ground and fallen trees, especially near water and in wet weather.
- Adequate staff to student supervision ratios.
- Fields may contain farm animals.
- Long trousers are advised.
- Check the weather - waterproofs or hats and sun cream might be needed.
- Taking a drink with you is advisable.
- Plants such as nettles and brambles can sting and scratch; berries from plants can cause stomach upsets if eaten.
- There are no toilet facilities, so we recommend that toilet paper and antibacterial hand gel are taken as a precaution.
- Everyone must clean their hands before eating.
- Remember that a large group of people can be intimidating, especially to animals.
- Remember to follow the Countryside Code.

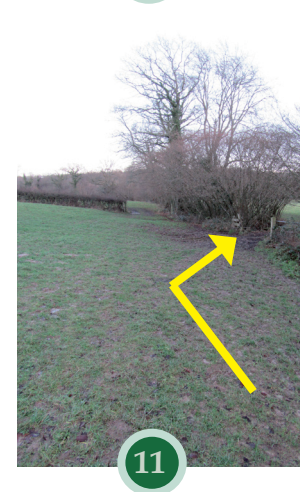
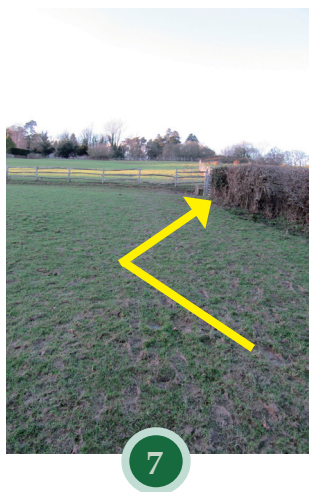
Footpaths are subject to change. The walk should always be checked for new risks before venturing out, especially when planning to take groups of children.

www.highweald.org

Burwash CE Primary School High Weald Welly Walk



Be a High Weald Hero - you can make a difference



For guidance only; actual conditions may be different from those shown, depending on the weather and time of year.

Photo guide and route description

From the playground, walk through St Bartholomew's churchyard to the High Street and turn left. Cross School Hill and look out for a gap between the houses with a public footpath sign, on your left **1**. Turn down here and follow the narrow path to the top of the field where the path divides **2**. Take the right hand path to cross over a footbridge and pass through a gate **3**. Walk across the top of the field to pass through a gate and continue along the right-hand edge of the next field. Enter a fourth field via a gate and cross diagonally passing a pond on your right. At the next field, head straight downhill towards the stile, to meet the road. Turn right (beware there are no pavements here) and at the road junction outside Batemans, turn left. Pass a converted oast house and immediately turn right at the footpath sign **4**. Follow the path around the mill pond, beside the meadow and then between trees alongside the stream. Continue straight ahead, passing through a kissing gate and entering a field. Cross the field on the worn path to go through a gate and cross a small footbridge **5**.

Turn right following the path close to the trees. Enter the next field through a gate to continue straight ahead. Look out for a gate and footbridge on your right just before a large oak tree **6**. Go over the bridge and turn left. The path enters a small woodland with a gill stream (look out for the sunken route ways). Pass through a kissing gate and walk uphill through the wood. At another kissing gate enter a field and walk beside the right hand hedge. At the top of the hedge, climb over the stile on your right and walk along the top of the field **7**. In the next field, head downhill

and pass a pond on your right. Carry on through the next field and turn right at the surfaced track **8**. Pass a house and barn on your right and follow the track as it narrows **9**. Continue on this path passing a couple of dilapidated barns on your left. The path enters a field via a stile **10**. Follow the path along the right hand edge. Do not enter the field straight ahead but turn right to cross a small stream **11**. In this field follow the left hand hedge to start with, then cross the field to head to the bridge **12**. Cross over and turn left. Continue on this path through the trees, beside the field on your left and back to the mill pond. Return to Batemans where you turn right to walk along the road. Look out for the stile on your left to head back up the hill and retrace you steps up to the High Street and back to school.

Look out for...





Ancient routeways

Key

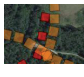
 Burwash CE Primary School


 WALK ROUTE

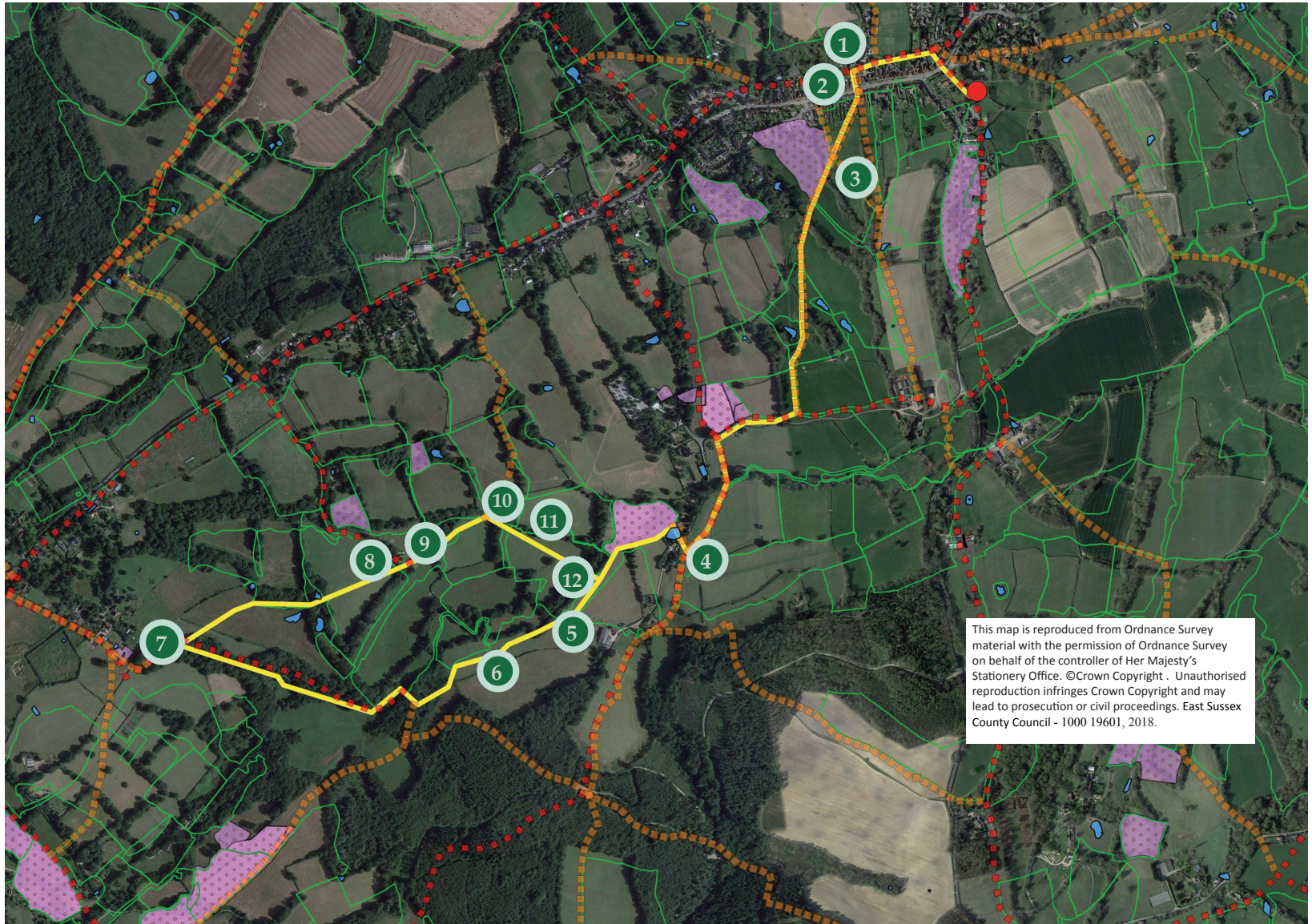
 numbered points

 meadows

 ponds

 historic routeways

 historic field boundaries



Look out for these key High Weald landscape features on the Welly Walk

Medieval Landscape

Many views of the High Weald from the Burwash Welly Walk look much the same today as they did in the 14th century with gently rolling hills, irregular-shaped fields, scattered settlements and wooded areas. These features give the area its unique character.



Batemans and the Landscape

The High Weald provided all the ingredients for a thriving iron industry during Tudor and early Stuart times: iron ore in the rock; wood for fuel, and streams to feed water powered forges and furnaces. It is thought that Batemans was built in 1634 by a Wealdon ironmaster. A wall of sandstone just over the road from Batemans shows where sandstone was quarried to make bricks for the 17th century house. Hints to Burwash's industrial past can be found in local names such as Furnace Gill and Forge Wood.

Author Rudyard Kipling, who lived at Batemans 1902-1936 was inspired by the local landscape and its history to write *Puck of Pooks Hill and Rewards and Fairies*.



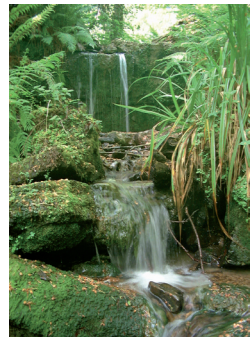
'He pointed to the bare, fern-covered slope of Pook's Hill that runs up from the far side of the mill-stream to a dark wood.'

Puck of Pooks Hill, Rudyard Kipling

If you are interested in finding out more then please visit www.highweald.org/learning_zone

Gill Streams

Steep-sided, wooded gills are formed where a stream has carved a deep channel through the soft clay and sandstone of the High Weald. Plants growing on these slopes, such as ferns, liverworts and mosses form an important, fragile eco-system.



Wildflower Grassland

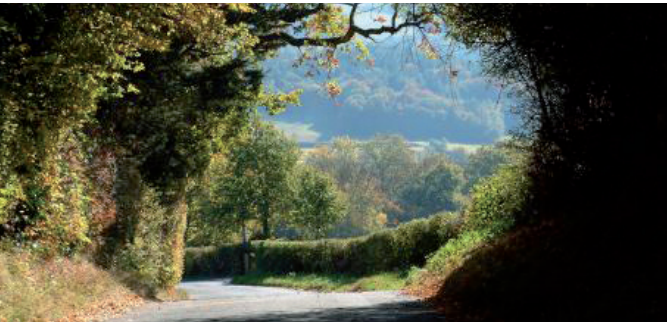
Ancient meadows and pastures are special because they support so many different plant and animal species and yet over 80% have disappeared in the last 100 years. The High Weald has a relatively large



number of these 'unimproved' grasslands. You will pass a couple on this Welly Walk. See how many different flowers you can see in spring and summer.

Ponds

Ponds are an important habitat for wildlife and the High Weald has lots of them. Many ponds have developed because of human activity such as quarrying. Ponds provide homes for many plants and animals including dragonflies, caddis flies and frogs.



Ancient Routeways

Many paths in the High Weald have been used for centuries, some as far back as Neolithic times. This use by people, animals and later, carts, has worn away the soft ground to create deeply sunken sections. Look out for sunken routeways on your right in Bog Wood and on School Hill.

*There was once a road through the woods,
Before they planted the trees,
It is underneath the coppice and heath,
And the thin anenomes.*

Rewards and Fairies - Kipling