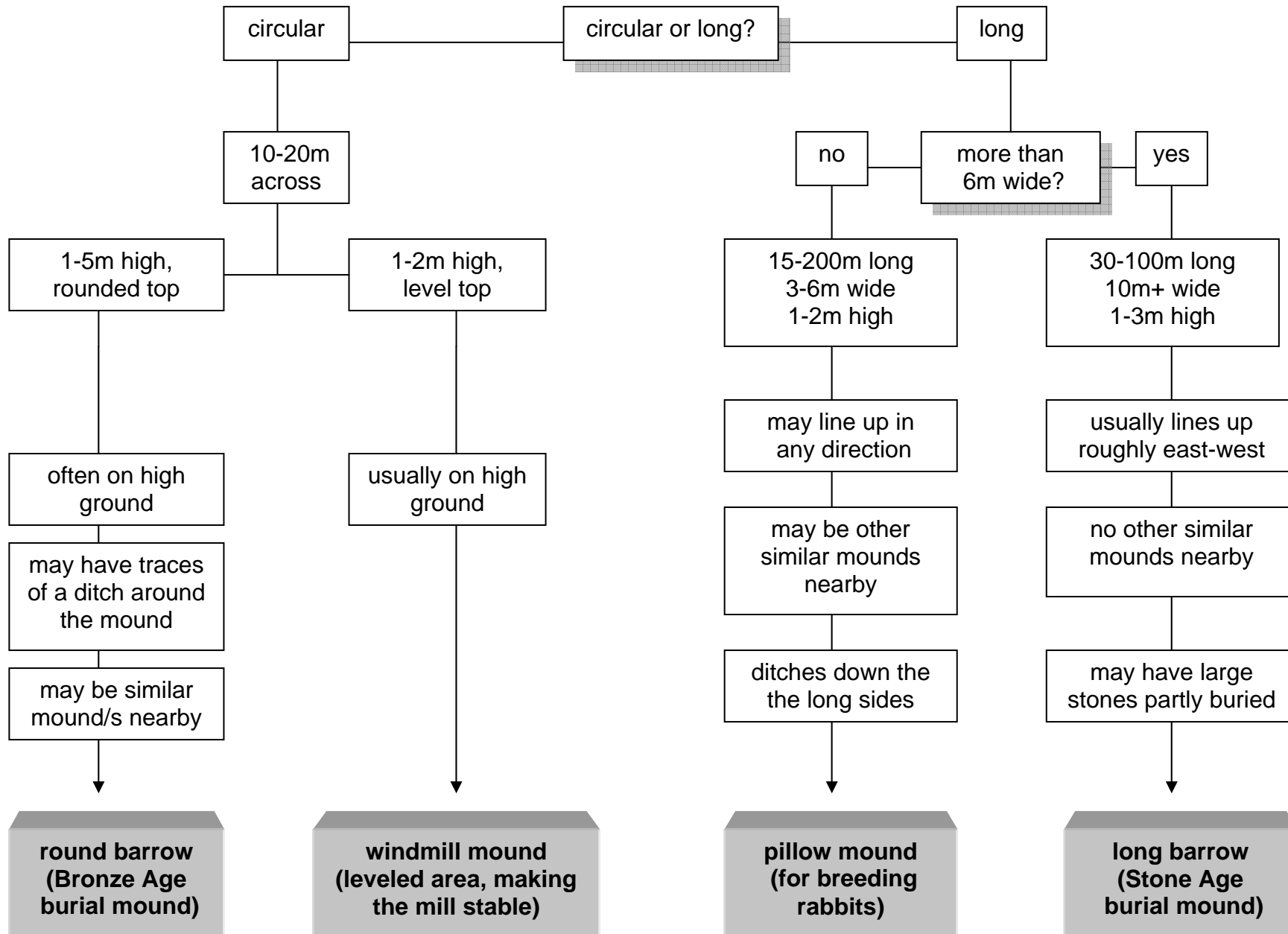


Identification Chart for 'Time Travellers!' at Broadstone Warren

Historic Environment Awareness Project - led by East Sussex County Council and involving West Sussex County Council and Kent County Council, as part of the Weald Forest Ridge Landscape Partnership Scheme.

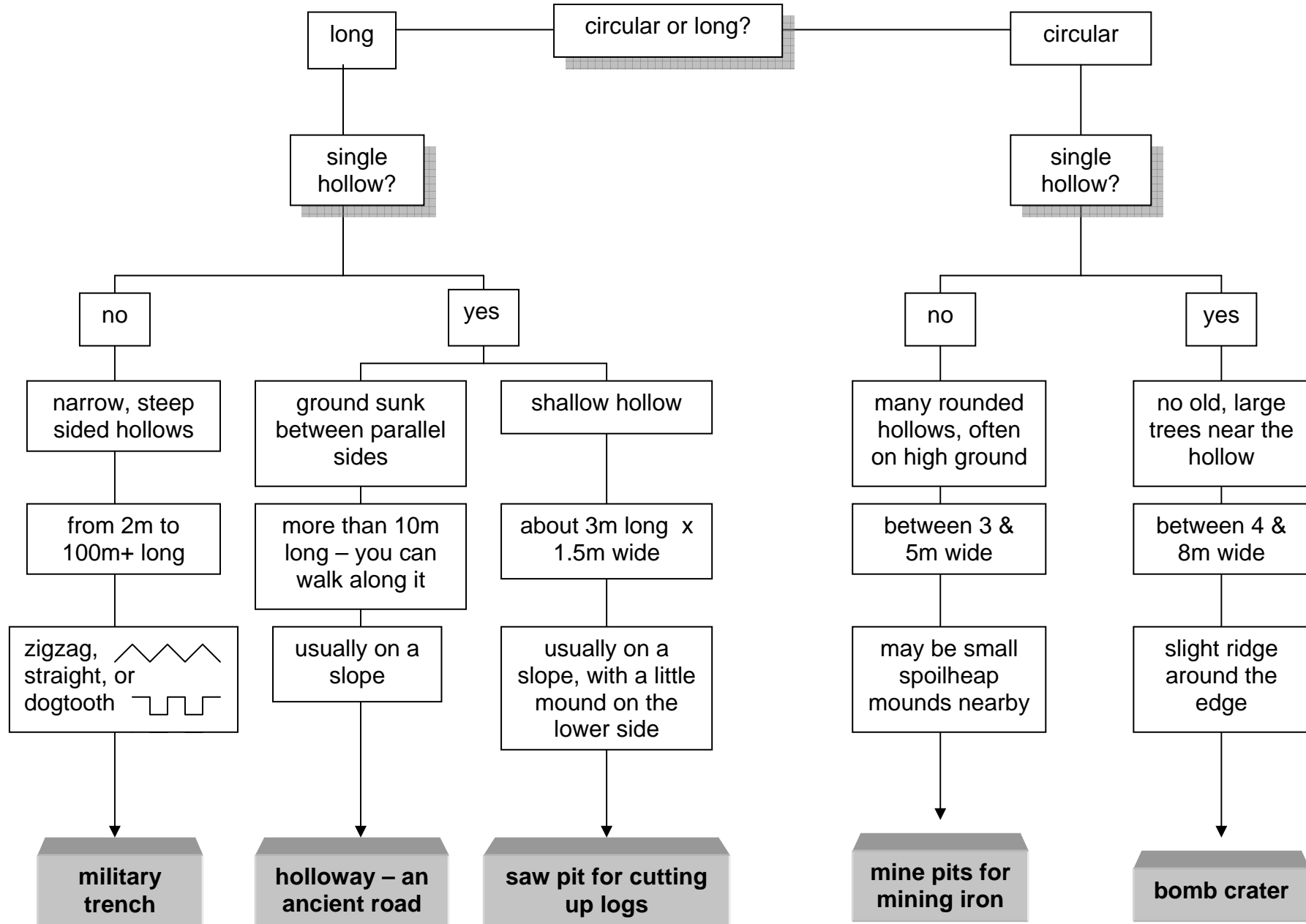


IDENTIFICATION CHART FOR MOUNDS





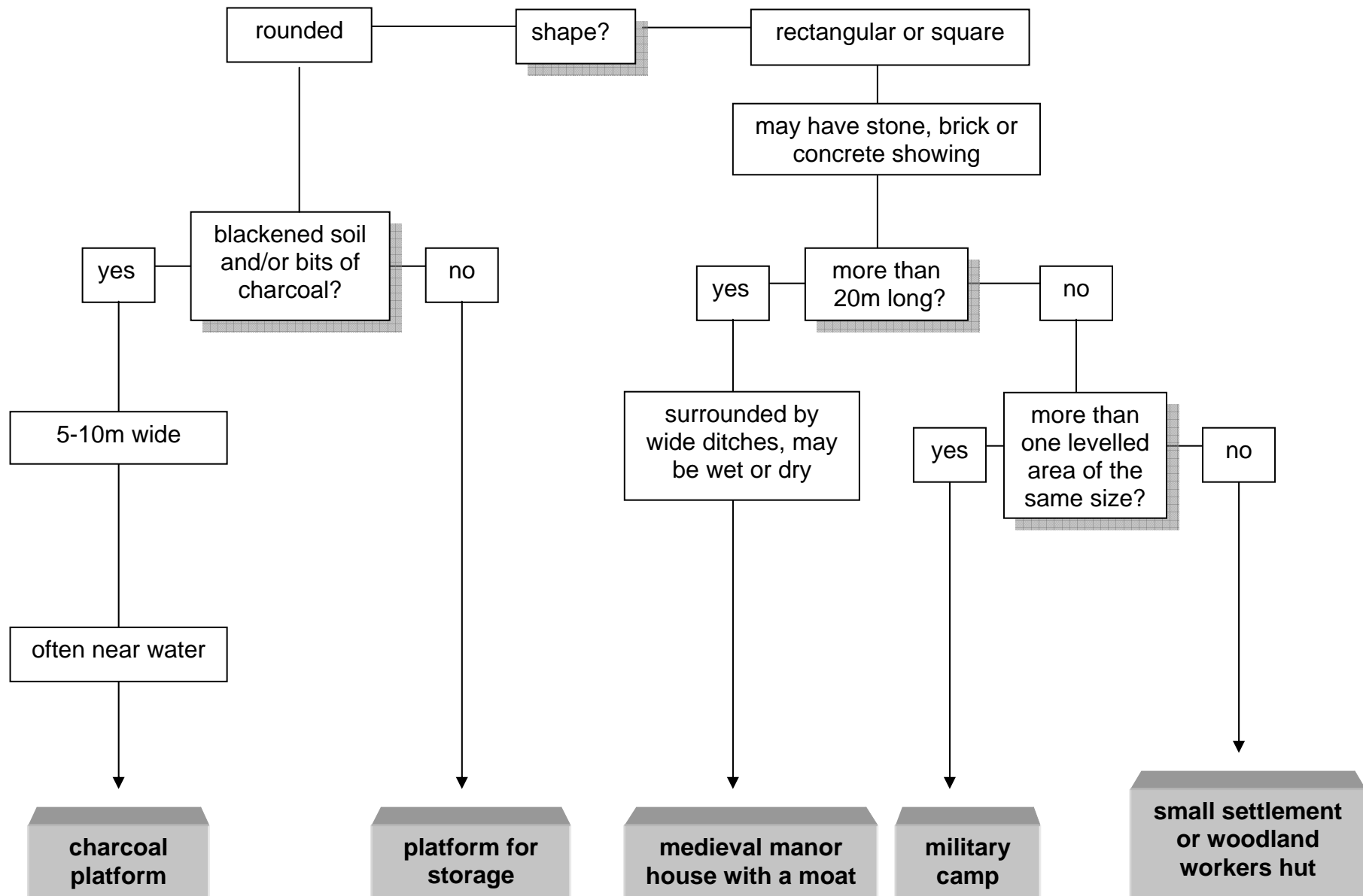
IDENTIFICATION CHART FOR HOLLOW



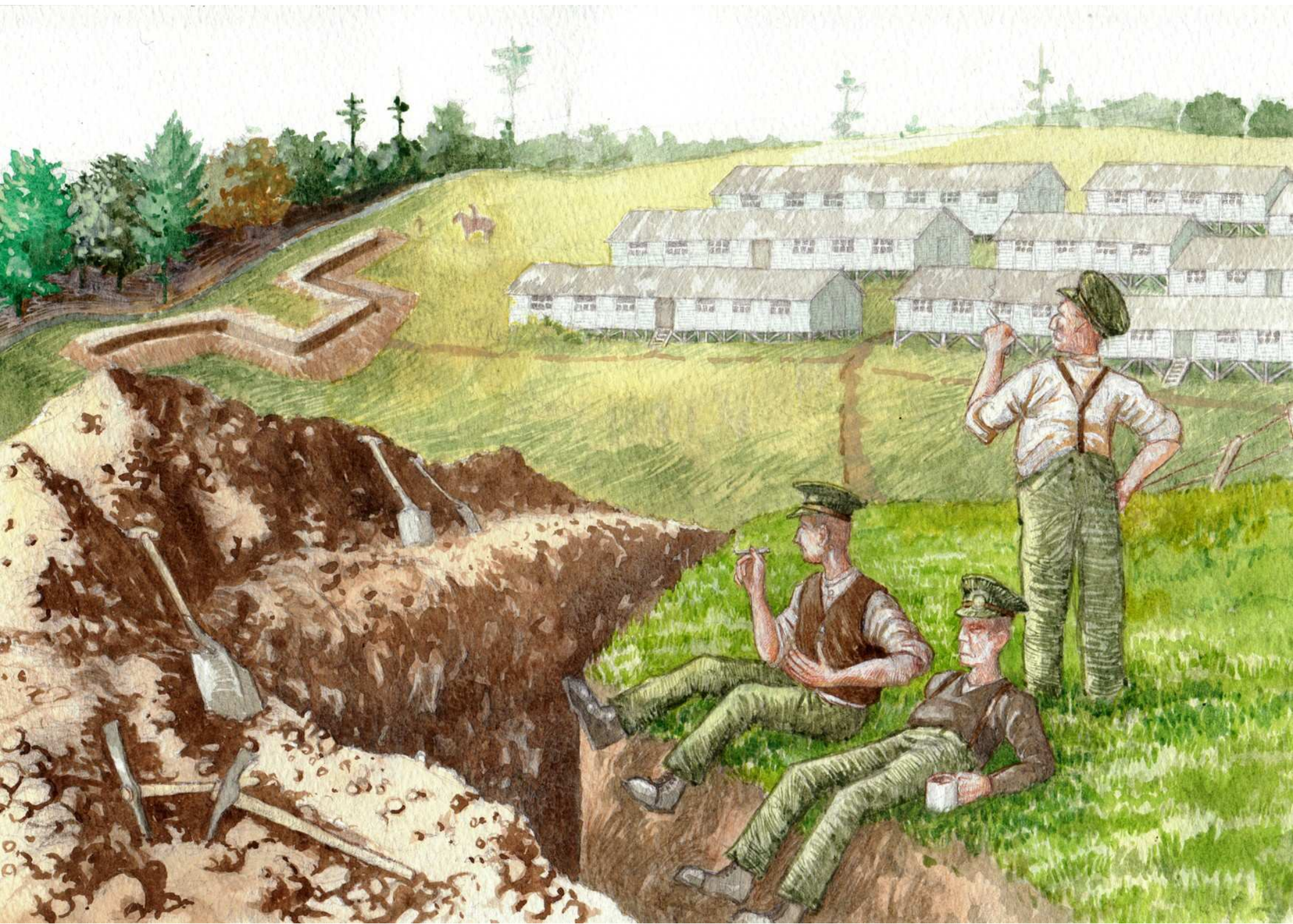




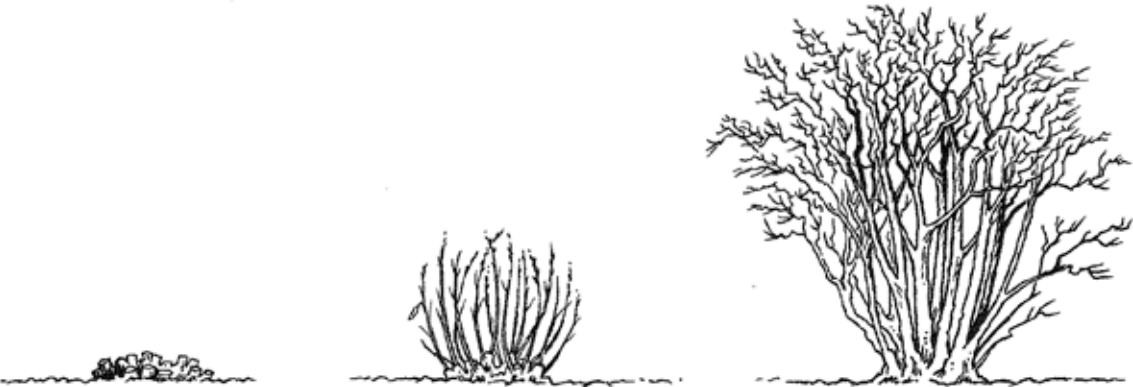
IDENTIFICATION CHART FOR LEVELLED AREAS







SIGNIFICANT TREES



Top:

coppice stools, l to r – newly cut, young re-growth, mature re-growth



Middle:

left – pollarded tree, new re-growth out of reach of grazing animals

centre – outgrown pollarded tree

right – a 'stub', cut at a height between coppice and pollard often used as a boundary marker



Bottom:

grown out laid hedge