



# Planning and heritage: the role of the National Trust

Andrew Shaw  
Planning Adviser, London and South East



# National Trust





# NT background

The National Trust for Places of  
Historic Interest or Natural  
Beauty

Founded in 1895 as a body “to  
*act as a Corporation for the  
holding of lands of natural beauty  
and sites and houses of historic  
interest to be preserved intact for  
the nation’s use and enjoyment”*



Now Europe’s largest conservation charity and with over 4  
million members a significant ‘weight of opinion’



# National Trust Acts (1907)

Section 4(1): "... promoting the permanent preservation for the benefit of the nation of lands and tenements (including buildings) of beauty or historic interest and as regards lands for the preservation (so far as practicable) of their natural aspect features and animal and plant life"

Section 4(2) '...acquire by purchase gift or otherwise and may hold... buildings ... and any other property of whatsoever nature and may maintain and manage or assist in the maintenance and management of lands as open spaces or places of public resort and buildings for purposes of public recreation, resort or instruction and may accept property in trust for any public purposes... and may do all acts or things and take all such proceedings as they may deem desirable in the furtherance of the objects of the National Trust...'

Section 21: powers to declare property inalienable

*"Looking after special places: for ever, for everyone"*



## Inalienable land:

The National Trust Acts provide for “*land or tenements (including buildings)*” to be declared inalienable.

- Cannot be sold or mortgaged
- Has protection against being compulsorily acquired without a Special Parliamentary Procedure being invoked
- Cannot be reversed
- Approximately 90% of National Trust land is inalienable



# South East context



# LSE's plans for 2015-18

## 1 Looking after what we've got

- Tackling the backlog in buildings, collections and landscape restoration at our lowest scoring CPI properties
- Refurbish Category 3 cottages at a rate of 30 a year – minimum Bronze standard EPC rating
- Achieve Level 2 EMS by May 2015 and Level 3 by 2018, using the LSE Energy Tracker tool
- Delivery of major conservation projects at Knole, Cliveden, Stowe, The Vyne, Clandon, Basildon, Hinton Ampner, Buscot Park and Petworth



## 2 A healthier, more beautiful environment

- Assess condition of all our land and work with our tenants to meet appropriate standards
- Develop a small number of projects for landscape-scale partnerships (White Cliffs, Wandle Valley, New Forest HLF, West Wight and South Downs)
- Big 6 landscapes are our focus (Chilterns, Surrey Hills and North Downs, South Downs, New Forest, Isle of Wight, Kent Coast)
- Large woodland regeneration at Northwood (South Downs); land & wildlife conservation at Foxbury (New Forest)



National  
Trust

## 3 Experiences that move, teach and inspire

- 27 Explore & Active sites will have improved the basics of the visitor welcome – to enhance people's connection with the outdoors
- All Explore & Active sites will introduce car park charging and membership scanning
- Spirit of Place set down on paper and actively used by early 2016 (PFE and large outdoor properties)
- 7 Principles of Interpretation embedded and actively used by everyone
- Support for 363 opening including a review by 2018
- Service Leadership championed by all and its impact felt by our visitors at all our places
- Creative partnerships with arts, education and cultural bodies e.g. Arts Council England, Oxford University



## 4 Looking after the places where people live

- Monitoring the impact of pressure from transport infrastructure and projects and housing demands (Crossrail, HS2, airport capacity, pressure on covenants)
- London work continues to focus on new audiences and partnership working – both on and beyond NT places. Wandle Valley is our major landscape project here



## 5 Growing support

- Support the introduction of a new Trust-wide marketing strategy that will help us all better communicate our Cause
- Support our teams to create and curate better content, especially digital content for the new website
- Ensure we all play our role in encouraging our members to stay with us longer, by better understanding each member's reasons for joining and enjoying the Trust
- Always offering our members a warm welcome, goodbye and advice on where else to visit at our places – especially our 1st year members
- Rolling out and making best use of the new MyVolunteering system at all our places
- Supporting all our Volunteer leader roles to help them ensure all our volunteers have an experience they really enjoy and can recommend to others
- Everyone feels like a fundraiser, and we make it easy to give. Priority projects are Runnymede, Stowe, Chartwell, Knole, Clandon (Hinemihi), South Downs, The Vyne and Leith Hill Place





**Legend**

|  |  |
|--|--|
|  |  |
|  |  |
|  |  |
|  |  |

Main G / PM property base shown in larger text

**LONDON PROPERTIES**

Swakeleys, Fenton House, Squire's Mount, Sutton House, Willow Road, Boswell Street, Roman Bath, George Inn, Eliot Place, Dartmouth Row, Osterley Park, Kensington Square, Lindsey House, Carlyle's House, OAG, Blewcoat School, Beulah Hill, East Sheen, Ham House, Home Farm, Obelisk, Morden Hall Park, Hatch Furlong, Selsdon Wood, Petts Wood, The Homewood, Cedar House, Slyfield House, Park Downs, Bookham-Commons.

**National Trust**

Title: London and South East Regional Map 2010  
 Scale: 1:675,000 on A3 (Inset 1:110,000)  
 Date: 15th October 2010

London and South East  
 Polesden Lacey, Dorset, Surrey RH6 6BD  
 Telephone 01372 453421

Reproduced by permission of Ordnance Survey and Digital Mapping Solutions from Dorset Estates. © Crown copyright and database right 2010. All rights reserved. Licence numbers 100023974 and 100019918

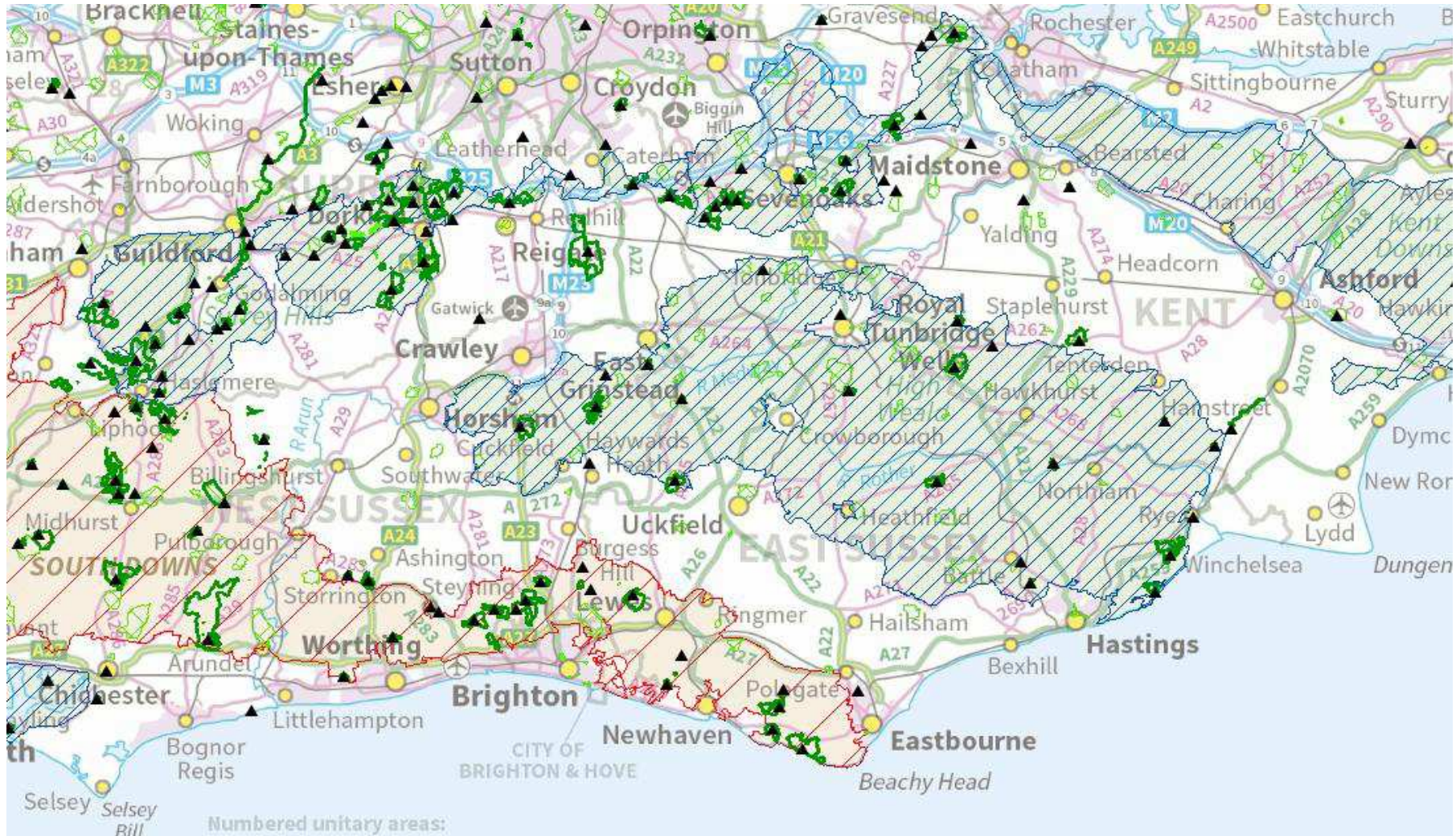


# The regional numbers

- 34,000 hectares, of land, 88% of which is inalienable
- 12,340 ha in AONB (42% NT land)
- 7,582 ha in national park (26%)
- 68% Trust land is in a protected landscape
- 44 Historic houses, 31 of which are accredited museums
- 48 historic park and gardens
- 808 listed buildings, 91 at Grade I
- 172 Scheduled ancient monuments

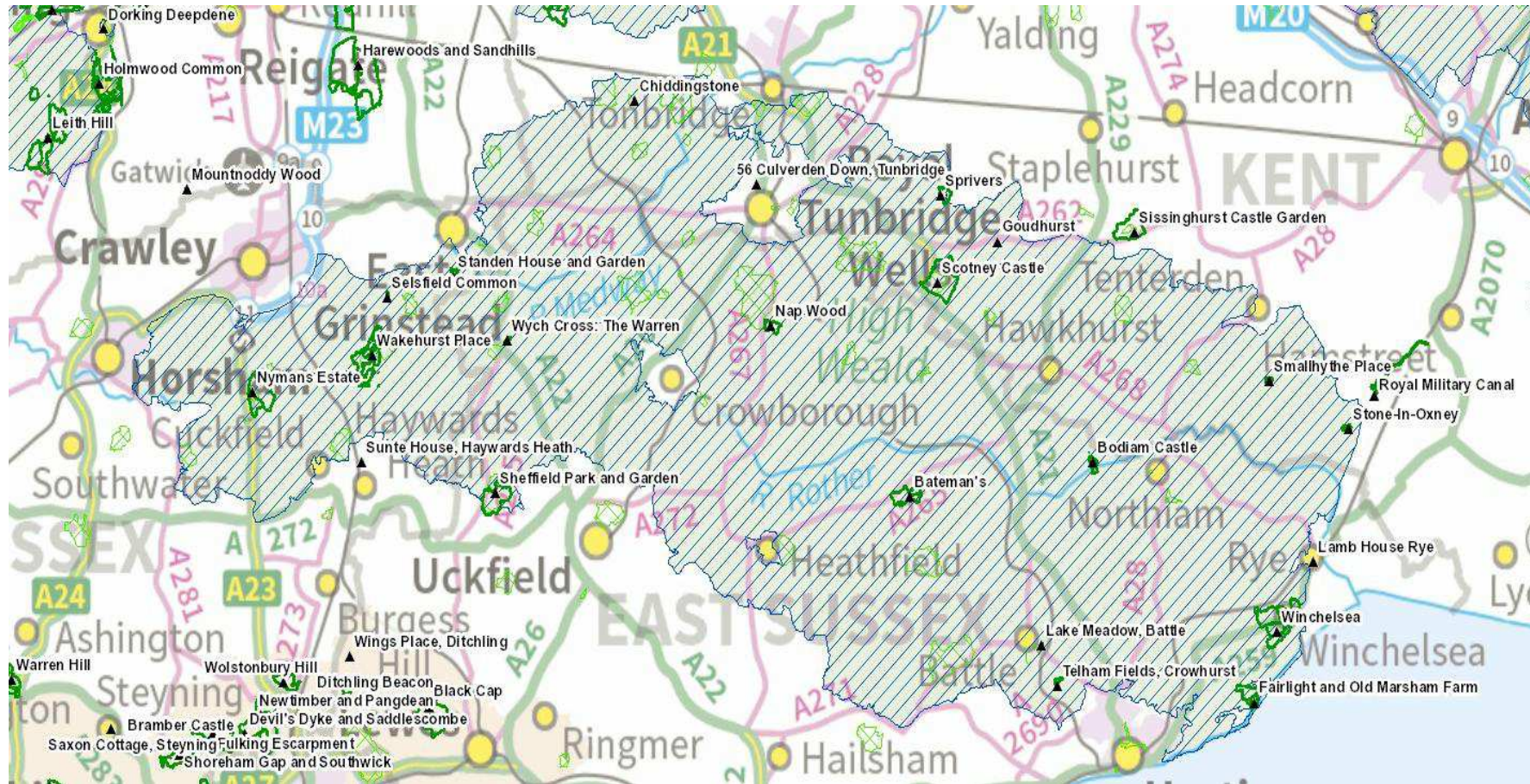


# NT & protected landscapes





# High Weald AONB





# NT Property in High Weald

*Wakehurst*

*Nymans*

*Standen*

*Sheffield*

*Park*

*Scotney*

*Bateman's*

*Bodiam*

*Winchelsea*

Plus

Fairlight, Smallhythe Place, Lamb House, Chiddingstone

And...

an honourable mention for Sissinghurst which should be in  
the AONB



# National Trust and planning

Main aspects of the Trust's planning work:

- Development Management
- Policy
- Major infrastructure
- External advocacy



# Development Management



Trust planners work across all aspects of planning applications

- Making Planning applications
- Listed Building applications
- Changes of use
- Advertisements

Principally for the Trusts work itself but also responding to external applications



Multiple designations always make life interesting...





# Planning Policy

The Trust is involved in a full range of local policy issues;

- Responding to Government consultations
- National Planning Policy Framework
- Local plans
- Local authority liaison
- Beginning greater outreach and partnership involvement



# Major infrastructure



Renewable infrastructure

Airports

HS2 & Transportation – road, rail, air

Waste









# Advocacy and partnerships

**UP FOR GRABS**

Government planning reforms are a threat to the everyday places you love

**Make your voice heard**

**Sign the petition here today**

For more information visit [nationaltrust.org.uk/planning](http://nationaltrust.org.uk/planning)

National Trust

The poster features a scenic view of a residential area with rolling green hills in the background under a blue sky with scattered clouds.





“For ever, for everyone”



[www.nationaltrust.org.uk/planning](http://www.nationaltrust.org.uk/planning)

# High Weald Heroes 2014/2015



- Projects

- Working with ESCC archaeology team to create Handling Boxes
- Developing themed Welly Walks for the New Curriculum
- Creating New Welly Walks
- Supporting outdoor learning and providing resources, workshops and presentations for 83 High Weald Hero schools
- Whopper Welly Walk link to Wealden and Rother Walking Festivals



# Projects

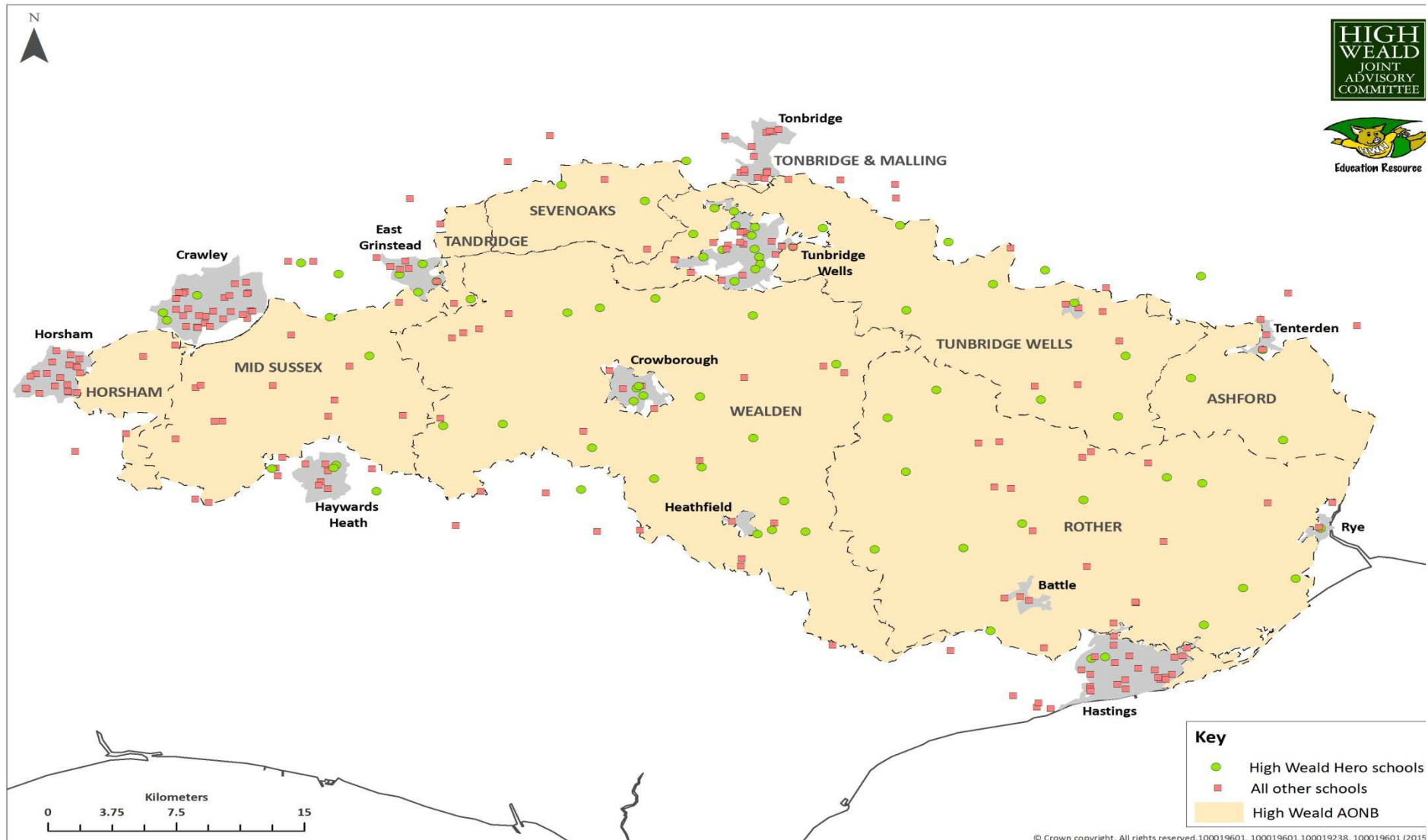


# The Whopper Welly Walk

- Partnerships with Wealden and Rother Walking Festivals
- Two weeks – over 700 children walking in the High Weald landscape
- Photos and publicity in local papers



# Where are the schools we worked with?



# What about the numbers?



- Worked with, advised or educationally supported over 50 schools – over half the HWH schools
- Worked directly with over 2,500 pupils



# What sort of response have we had?



- *Your input has really made a difference with the children's understanding of the High Weald. Julia Armstrong, Head of Penshurst school*
- *LKs2 had a fabulous welly walk and still make reference to the experience in their learning three weeks later! Mrs Rendall-Jones, teacher, Wadhurst School.*
- *Thank you Rachel – what a brilliant morning and a great contribution to our Anglo-Saxon experience! Mr Poole, teacher Speldhurst School*
- *Thank you so much for today. It was fun and informative– perfect. Mrs Eldridge, Teacher, Guestling Bradshaw school*
- *Thank you for a wonderful experience with the Welly Walk today. My class absolutely loved it and have been talking about it all lunchtime. Sarah Ward, teacher OLQOH school*
- *Thanks for last Friday. The children really enjoyed the walk and the activities. The boys spent most of their lunchtime cleaning stones looking for iron!! Mr Tooze, Broad Oak school*
- *I just wanted to say what a brilliant day we all enjoyed on Thursday, despite the rain!*
- *The class said it was one of their best days ever – Esmee Thomas Rolvenden School*



# Projects 2015/2016

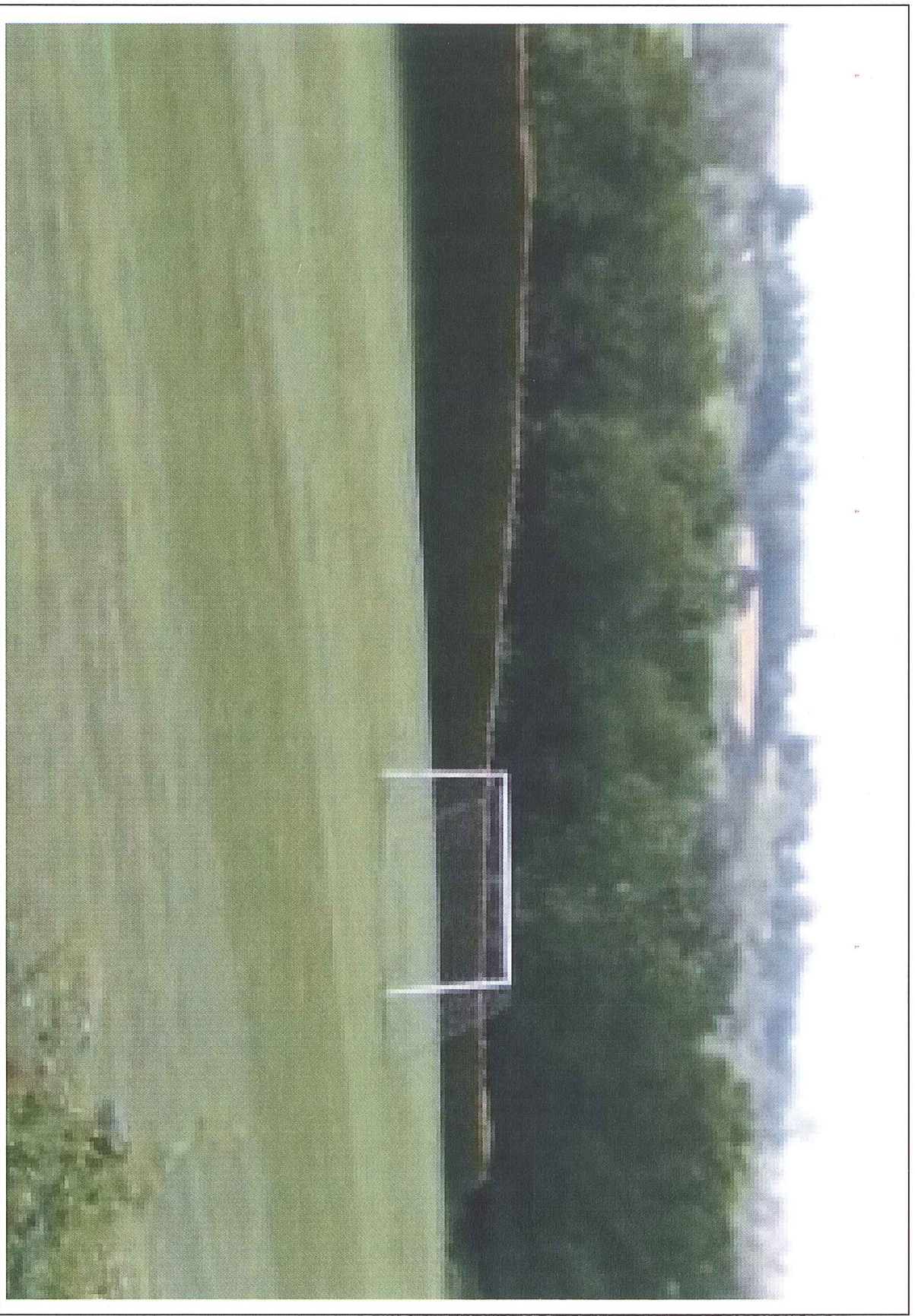


- Grant-funded arts project to develop landscape guides with schools
- Partnership project with John Muir Award for Year 5 and 6 children
- Developing a Welly Walk package for new schools





Pony paddocks surrounding modern farm building off the main road close to the settlement. No historic environment or biological records for the site.



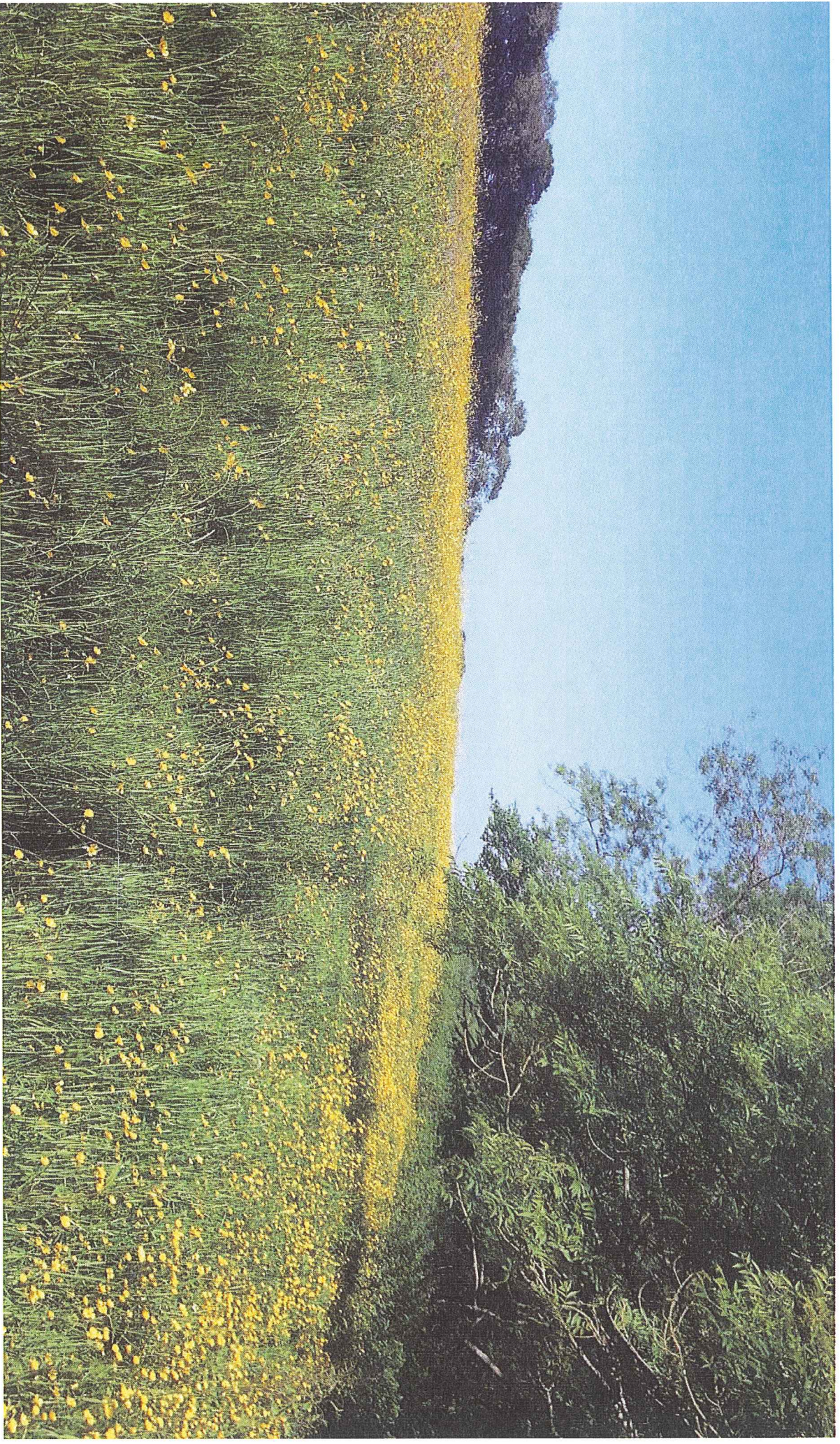
School playing fields within the settlement. The Historic Environment Records show evidence of historic boundary banks and a Roman settlement nearby.



An arable field adjacent to the settlement boundary with a public footpath. No historic environment or biological records for the site.



An orchard adjacent to the settlement boundary with a public footpath. No historic environment or biological records for the site.



A colourful semi-improved grassland with public footpath and popular viewpoint. No historic environment or biological records for the site.



A group of small fields adjacent to the settlement boundary grazed by livestock and abutting a historic farmstead with a 17th century listed barn, now a dwelling



A small wildflower meadow with a public footpath, adjacent to the settlement boundary. Rare adder's tongue fern recorded at the site.