

The Battle & Brede Landscape Partnership Scheme

Development Phase Briefing (updated January 2013)



Involving people with the unique heritage of 1066 Country

Introduction

The Heritage Lottery Fund runs a grant programme that offers significant grants – up to £2 million – towards large scale, landscape focused, partnership schemes that achieve:

- conservation and restoration of the landscape's built and natural heritage features
- increased community participation in local heritage
- increased access to and learning about the landscape and its heritage
- increased training opportunities in local heritage skills.

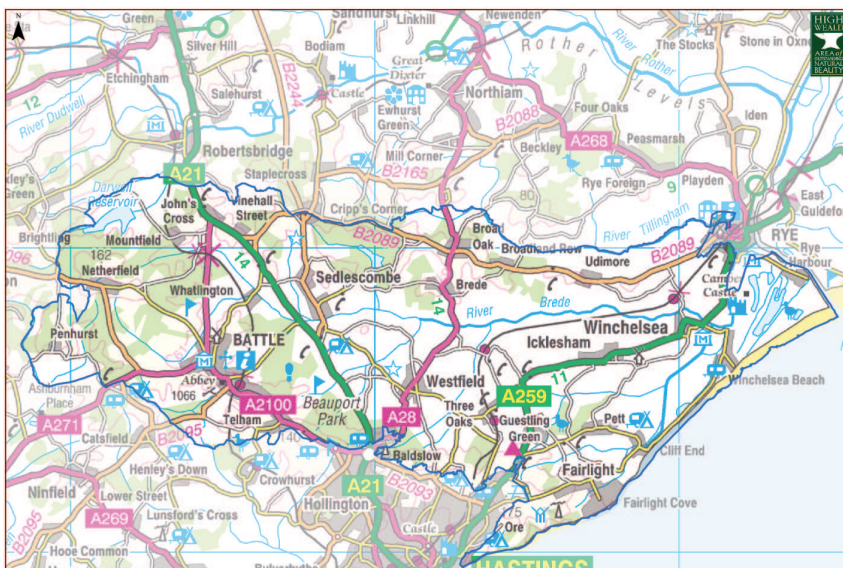
A Landscape Partnership Scheme (LPS):

- is based on an area of countryside that has a distinctive landscape character that is recognised and valued by local people
- is no smaller than 20 km² and no larger than 200 km²
- is supported by a partnership made up of regional, national and local organisations, community groups and members of the community
- is made up of a portfolio of smaller projects, which together provide long-term social, economic and environmental benefits for the area
- includes projects that are primarily for public benefit, not private gain.

The High Weald Joint Advisory Committee (JAC) has successfully developed and delivered the £2.8 million Weald Forest Ridge Landscape Partnership Scheme in the north-west of the High Weald Area of Outstanding Natural Beauty (AONB) and is taking the lead on the development of another Landscape Partnership Scheme focused in the south-eastern end of the AONB.

The new Scheme area is 196km² and focused on the Brede Valley and its hinterland. This focus has arisen from discussions with potential partners that indicate an enthusiasm for proactive partnership working to achieve heritage improvements within the area.

The Proposed Scheme Area



Battle & Brede Landscape Partnership Scheme Project Area



The Battle & Brede Landscape Partnership Scheme

Development Phase Briefing (updated January 2013)



Involving people with the unique heritage of 1066 Country

Fourteen parishes fall within the Brede Valley and its hinterland: Battle; Brede; Brightling; Dallington; Fairlight; Guestling; Icklesham; Mountfield; Penhurst; Pett; Sedlescombe; Udimore; Westfield and Whatlington. The Scheme's current boundary has been guided by the parish boundaries. Although the boundary has been fixed to enable the Stage 1 bid (see below) it may change during the Stage 2 development phase.

The project boundary is not exclusive. It is expected that many of the Scheme's projects will benefit people living or working close to the area, including people living in Hastings, Rye, Heathfield and Robertsbridge.

The Draft Vision

Based on discussions with partners the draft vision for the area is:

"A valley, coast and hinterland that is managed productively in conjunction with well connected and managed habitat corridors of wetland, grassland, scrub and woodland. An area in which the local population and visitors celebrate the area's resources, the use of those resources through time and the opportunities they provide to meet present and future generation's social, economic and environmental needs. An area where residents and visitors can more confidently access and explore its cultural heritage. An area in which people, in particular young people, have an opportunity to learn skills, both informally and formally, that enable sustainable development and management of the built and natural heritage for multiple purposes".

Next Steps

Securing a grant for a Landscape Partnership Scheme is a long-term process. A Stage 1 submission aims to 'sell' the Scheme to the Heritage Lottery Fund. This bid will be considered along with others from around the country by a national panel and there is a 1: 2 chance of success. If a Stage 1 bid is successful, a grant is provisionally committed to the Scheme. A firm commitment is subject to the Scheme detail being developed to the satisfaction of the Heritage Lottery Fund in a Stage 2 bid.

The Timetable for the Battle and Brede LPS

Visioning work, community consultation	January 2013 to April 2013
Stage 1 bid resubmission	31 May 2013
HLF national decision on phase 1 submission	October 2013
Development phase	October 2013 to October 2014
Stage 2 bid submission	October 2014
HLF regional decision on phase 2 submission	March 2015
Year 1 delivery (start up phase 6 months)	1 April 2015 to 31 March 2016
Year 2 delivery	April 2016 to March 2017
Year 3 delivery	April 2017 to March 2018
Year 4 delivery	April 2018 to March 2019
Year 5 evaluation and completion	April 2019 to 31 September 2020
Scheme finish	31 September 2020



The Battle & Brede Landscape Partnership Scheme

Development Phase Briefing (updated January 2013)

Involving people with the unique heritage of 1066 Country

The Partnership

The High Weald Joint Advisory Committee has good working relationships with organisations from the Heritage sector. Through the Weald Forest Ridge LPS, new working relationships have been developed with the arts and training sectors and it is hoped that these will continue and be developed further through the Battle and Brede Scheme. There is an aspiration that all projects will involve young people in their delivery so the JAC is particularly keen to develop new partnerships with organisations that work with or represent this group.

Many organisations have already been consulted on the Scheme and more consultation will be undertaken between January and April 2013. Interested organisations to date include:

Bumblebee Conservation; TCV; East Sussex County Council; East Sussex Archaeology and Museums Partnership; Environment Agency; Esus Forestry Training; Friends of the Brede Valley; Forestry Commission; Great Dixter House and Gardens; Hastings Borough Council; High Weald Landscape Trust; National Trust; Natural England; Pestalozzi Village International Trust; Plumpton College; Pond Conservation Trust; Rother District Council; Royal Botanic Gardens Kew; RSPB; South East Water; Sussex Coast College; Sussex Rail Partnership; Sussex Wildlife Trust; and the Woodland Trust.

The High Weald JAC is keen to enable as many people as possible to be involved with the scheme and are happy to consider all project ideas against the Scheme objectives. It is expected that more projects will be built into the Scheme during the development phase, should the Stage 1 bid be successful. Greater community consultation will also be undertaken at this stage.

The Grant Request

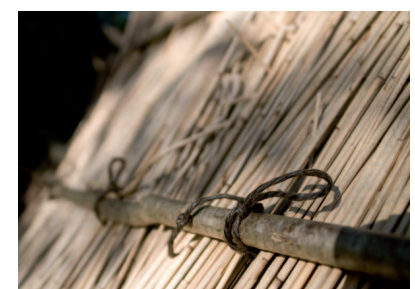
The Scheme could attract the maximum grant of £2 million towards a spend of at least £2.8 million. The greater the level of match funding the greater the chance of success – the aim is to secure match funding of at least 30%.

The Developing Programmes

The following list sets out the project ideas that were submitted by potential partners for the first Stage 1 submission (which was unsuccessful). There are in various stages of development: some projects have a lead partner and are well defined; others require further liaison between potential partners and a lead partner still needs to be identified. There is still scope for additional projects to be included for the Stage 1 resubmission (May 2013).

Theme 1: Training in Traditional Skills

- Sustainable building skills programme scheme focused on the production of low cost modular 'rooms' made out of local materials; designed and developed to meet the needs of the area's educational establishments for temporary and/or flexible space.
- Countryside management training placements – structured training and development opportunities, focused on partnership working with conservation charities, for example the Woodland Trust and National Trust.



The Battle & Brede Landscape Partnership Scheme

Development Phase Briefing (updated January 2013)



Involving people with the unique heritage of 1066 Country

- Archaeological training placements – structured training and development opportunities, focused on partnership working with local museums and record centres.
- Built heritage skills training programme – locally-based, specialist training in built heritage conservation or restoration, drawing on the expertise of the Weald and Downland Open Air Museum and involving local craftsmen.
- Woodland craft skills project– upskilling of existing craftsmen through a coppice week and other activities that forge links with retiring woodland craftsmen keen to pass on their skills.
- “Take Time Out to”.....have countryside fun, learn a skill and celebrate your area. Informal skills-focused events aimed at the general public.



Theme 2: Conserving and Enhancing the Built and Natural Features of the Area

- Large scale conservation works e.g. rhododendron clearance on four Forestry Commission sites following archaeological surveys with volunteers using Weald Forest Ridge LPS toolkits.
- Small scale conservation works on a number of other ‘public’ sites – those owned and managed by trusts in the area; RSPB, Woodland Trust, National Trust, RSPCA, etc.
- Conservation works on private land working with landowners already known to the partnership. Focusing on meeting advisory and funding gaps e.g. woodland edge management; livestock fencing of small woodlands; grazing support for small grassland sites and buffering of vulnerable meadow sites.
- Light aircraft and canopy level photography to determine the extent of phytopthera dieback and enable the development and implementation of risk mitigation plans.
- Roll out of whole crop strip grassland enhancement to establish nectar and pollen rich plant species in receptor fields using standard farm machinery.
- Ponds creation to improve the diversity of ponds in the area and meet the requirements of key species – to be developed and delivered under the guidance of the Ponds Trust.
- Floodplain woodland creation and re-instatement of gill woodland on the upper reaches of gill streams.
- Technical advice to landowners on soil management, with the production of soil management plans supported by funded soil tests.
- Small-scale funding to enable building restoration projects where there is a public benefit: Brede water works; Winchelsea cellars; tar pits.
- Operation of a building heritage grant scheme to enable higher quality restoration works on features of built heritage interest.



The Battle & Brede Landscape Partnership Scheme

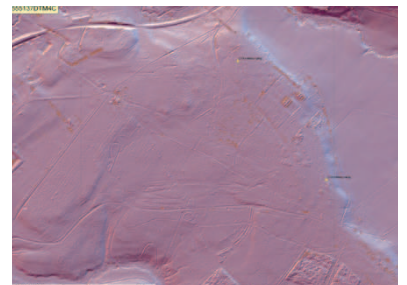
Development Phase Briefing (updated January 2013)



Involving people with the unique heritage of 1066 Country

Theme 3: Community Participation

- Asset-based community development exercises that draw on the information and expertise that can be offered by LPS partners.
- Projects which will help people record, analyse and promote their local heritage e.g. butterfly, moth, bird, routeway and other archaeological surveys.
- Video production training for accommodation providers and Chambers of Commerce to enable promotion of what is special about the area to visitors.
- IT project to enable communities to disseminate local heritage information; surveys, species records, images etc, in a way that can be used by others e.g. for planning purposes.
- LiDAR survey of the area to provide maps that can be used by local communities and others to target woodland archaeological surveys.
- A 'Getting Started' project for landowners – support for small actions that benefit wildlife e.g. bird and bat box erection, pond creation, seed bed creation, nectar banks, bee and wasp nest boxes, green shed roofs.



Theme 4: Access and Learning

- 'Welcome' improvements at key villages and countryside sites, for example Winchelsea, Brede High Woods, Hastings Country Park and Forestry Commission sites.
- Station improvements through Station Community Groups with partnership working to promote visitor access via rail.
- Parish rights of way project – routeway enhancements, community maps, self-guided trails and co-ordinated promotion to include imaginative engagement events such as sculpture trails and drama productions.
- Identification and re-instatement of the Brede tramway filling a gap in the ROW network around Brede village.
- Drama training for amateur dramatic groups, schools and other individuals – focused on bringing the area and its historical characters to life.
- Schools programme – expansion of High Weald Heroes programme to include a water-themed High Weald story and activities.
- School environmental day (based on Moulscombe event) that brings schools together with heritage education providers.
- Production of videos to record woodland craft skills and knowledge.



Further Information:

Gerry Sherwin, Business Manager, High Weald Joint Advisory Committee
E: g.sherwin@highweald.org T: 01580 879952