



# High Weald Joint Advisory Committee Annual Review 2016-17

*Working together to care  
for one of England's  
Finest Landscapes*



The High Weald Joint Advisory Committee is a partnership between: East Sussex, West Sussex, Kent and Surrey County Councils; Horsham, Mid Sussex, Tandridge, Sevenoaks, Wealden and Rother District Councils; Tunbridge Wells, Hastings, Ashford, Tonbridge and Malling and Crawley Borough Councils; Defra; Natural England; and organisations representing farming, forestry, community, business and recreation interests.

# Contents

---

Foreword	3
<b>1 Preparing, monitoring and reviewing the AONB Management Plan</b>	<b>5</b>
<b>2 Co-ordinating action and enabling delivery of the AONB Management Plan</b>	<b>9</b>
<b>3 Championing the High Weald and protected landscapes</b>	<b>14</b>
Financial summary	18
High Weald Joint Advisory Committee	19
The High Weald Area of Outstanding Natural Beauty	22



Mrs Jill Davison,  
Chairman of the High Weald  
Joint Advisory Committee (JAC)



## Foreword

**W**elcome to the High Weald AONB Partnership's annual review for 2016/2017. The last year has brought many successes; one of the most notable being our team's tireless work in seeking out and securing sources of non-Government grant aid.

The High Weald is a beautiful and precious historic landscape, but it is also a working landscape that is expensive and time-consuming to manage. In a time of austerity it is crucial that funding continues to be allocated to vital projects that help conserve and enhance the unique characteristics of this area.

As a result of the AONB Partnership's efforts during the last year, funding from the Sussex Lund grant programme, the National Grid's Landscape Enhancement Initiative and the Heritage Lottery Fund will support a plethora of large and small-scale land management projects into 2018 and beyond, working with landowners, local authorities, charities and community groups across the High Weald.

However, this success is hard won and there is still much to be done. New development continues to create significant challenges across the High Weald and our staff team is increasingly providing local authorities with evidence and knowledgeable advice on the potential impacts on our nationally-important landscape.

I would be remiss to omit the Brexit vote which has created its own extensive range of issues affecting the High Weald landscape, ranging from uncertainty over funding to probable changes in legislation for the environmental and agricultural sectors.

Despite these many challenges we are convinced that working collaboratively is the way forward. In bringing together our partners from the public and private sector we can combine



tradition and innovation, building mutually-supportive relationships that contribute to a sense of place and reinforce the High Weald's local identity.

I would like to end by commending the High Weald Heroes education programme which is not only a success story in its own right but an example to other AONBs around the country. With over 80 primary schools now signed up, the scheme's increasing popularity is a clear sign that the next generation has a strong appetite for learning about the historic High Weald around them – an extremely positive sign for the future.

---

Foreword

---

**Mrs Jill Davison**

Chairman of the High Weald Joint Advisory Committee (JAC)  
June 2017







10 neighbourhood planning processes were supported

Advice was provided on 132 development proposals



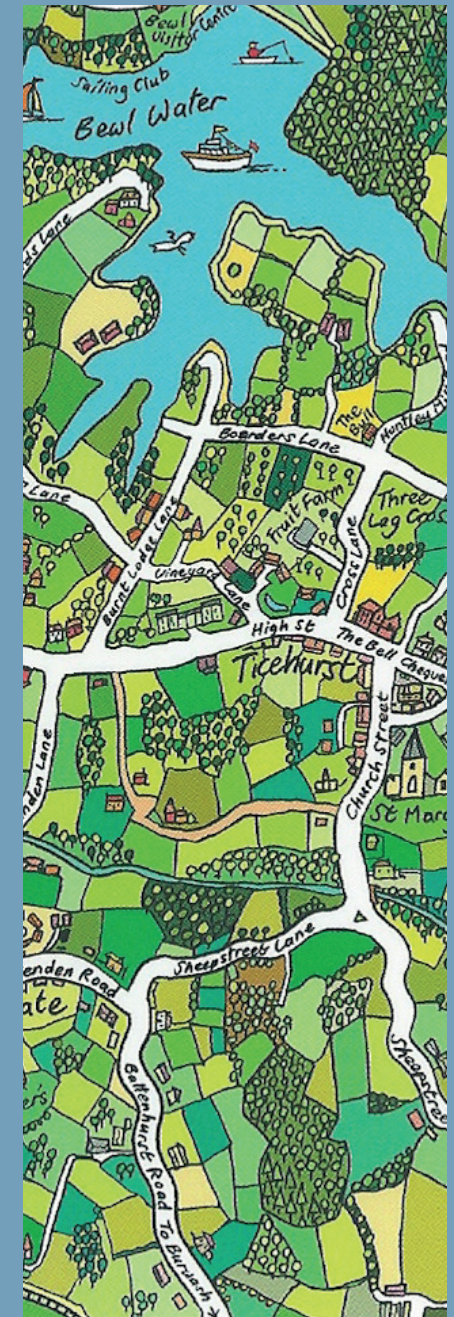
# 1

## Producing guidance and developing Management Plan evidence

**Advice was provided on 22 policy documents and 132 development proposals with a potential impact on the High Weald AONB.**

Activities included:

- **9 local policy consultations** including 1 Local Transport Plan, 1 Freight Transport Plan, 2 Minerals and Waste Local Plans, 3 Borough Local Plans and 2 supporting evidence documents.
- **10 neighbourhood plan processes:** Goudhurst, Cranbrook, Ticehurst, Horsted Keynes, Herstmonceux, Hawkhurst, Rolvenden, Robertsbridge & Salehurst, Sedlescombe and Copthorne; involving 4 presentations (1 with 300+ attendees), liaison with neighbourhood plan teams, providing AONB character data and mapping, as well as commenting on various drafts of the plans.
- **16 pre-application discussions and consultations** including large housing developments of 10-200 homes but also telecommunication masts and holiday accommodation.
- **61 local authority planning application consultations** (31 major i.e. over 10 homes and 31 minor) were responded to, most of which were for housing including 600 homes at Pease Pottage, 200 at Cranbrook and 200 at Heathfield. Other applications included large industrial and car sales premises, education and health facilities and agricultural development.





Parish map with AONB data

# 1

## Producing guidance and developing Management Plan evidence

High Weald road sign style



- **4 planning appeals:** written input to one at Horsham and one at Wittersham; contribution to an informal hearing at Wittersham; and a range of support to Rother District Council for a 4-day public inquiry into the proposal at Pashley Road, Ticehurst.
- **8 footpath diversion consultations** of which 2 were amended following advice.
- **3 water authority consultations** concerning new pipelines and boreholes.
- **40 general planning enquiries** about local issues and developments with maps, data and sources of further information supplied if needed.
- **14 meetings** with local authority planning (13) and highways (1) department representatives and 10 meetings with communities on local planning issues.
- **3 non-planning consultations** including: Forestry Commission's EIA Afforestation Thresholds consultation on behalf of the NAAONB; Defra's 25-year Environment Plan and the Ashdown Forest Governance Review.

**Two guidance documents were produced and each of the area's 99 parishes were provided with landscape character map sets.**

Activities included:

- A **Legislation and Planning Policy Advice Note** was produced to assist everyone making, commenting on and deciding planning applications in, or affecting, the High Weald AONB.
- **Parish character map sets**, displaying information on landscape character such as ancient woodland and historic field boundaries, were published online for each of the 99 parishes wholly, or partly, in the AONB.







Fieldscapes workshop with planners

# 1

## Producing guidance and developing Management Plan evidence

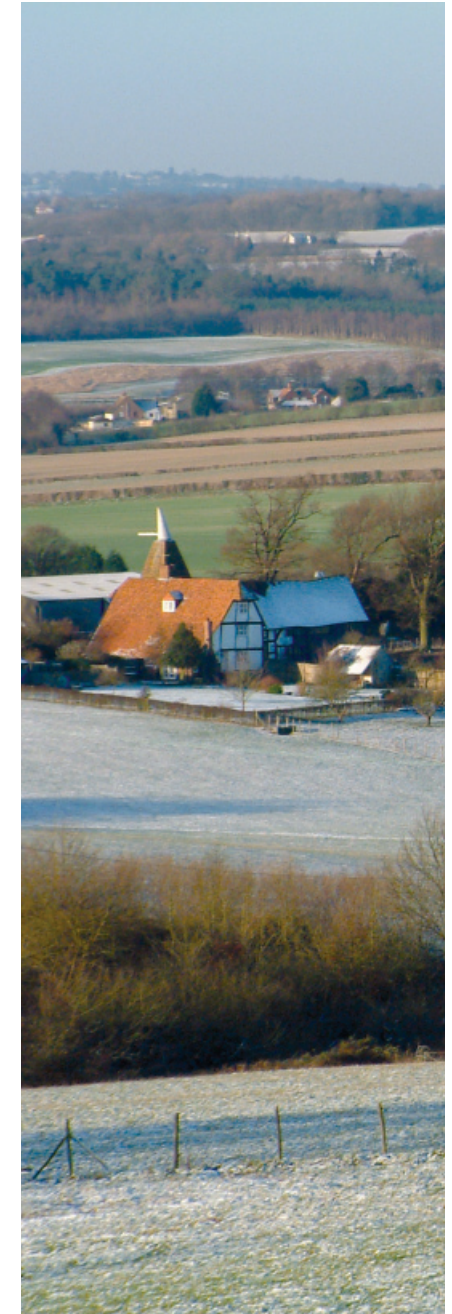
High Weald form and layout ideas



- **High Weald road sign guidance** was produced for communities wishing to install road signs that promote the High Weald designation, following the example of other AONBs including the Kent Downs, Surrey Hills and Chilterns.
- A contract to produce **High Weald colour guidance** was commissioned.

### High Weald AONB Management Plan activity focused on gaps in the Plan's evidence base and aimed to further understanding of two of the area's character components: **Fields and Heaths and Routeways.**

- **A national fieldscapes research project** working with English Heritage, local specialists and local authority representatives was completed, resulting in:
  - A Research Synthesis on the History of Field Systems
  - A High Weald Field Systems Character Statement
  - A Field Systems Assessment Framework
  - Four fieldscapes case studies including historic environment assessments and geophysics magnetometry reports for sites at Benenden and Frant
  - Four workshops for local planning officers/members including 2 fieldscapes assessment workshops for planning officers
  - A High Weald historic fields dataset (comprising 8484 unique polygons) through extraction and editing of Historic Landscape Character data.
- An **Historic Routeways data update** was completed by a GIS intern comparing all existing roads and Public Rights of Way (PROW) against a range of historic maps including the Ordnance Surveyor's Draft (c.1800 AD), parish tithe maps and the Ordnance Survey Epoch maps.
- A **High Weald Sustainable Housing Study**, exploring a housing form and layout that has relationship to the character of the High Weald, was commissioned and produced by Heritage Wind Ltd with The Timber Frame Co Ltd.





High Weald historic routeway

# 1

Producing guidance and developing Management Plan evidence



High Weald Joint Advisory Committee

- A report on **Lessons Learnt from Woodfuel Projects** across Kent and Sussex was produced working with the Kent Downs AONB.
- Three contracts were developed and awarded: a **survey of veteran trees** across 480ha of Dallington Forest; an **historic routeways study** and a High Weald **land management position statement**.

**Advice was provided to a further 27 organisations and local partnerships, predominately through partnership or steering group membership.**

**Action in Rural Sussex** 1 workshop; **Buglife** 2 meetings; **CPRE** 4 meetings; **Crane Valley Land Trust** 2 meetings; **Crowborough Town Council** 1 meeting; **Crowborough Festival Association** 3 meetings; **Defra** 2 meetings; **Eastern Rother Water Catchment Partnership** 3 meetings; **Forestry Commission** 1 meeting; **Hadlow College** 1 meeting; **High Weald Network** 3 meetings; **Kent High Weald Partnership Steering Group** 2 meetings; **Knepp Castle Wildland Advisory Group** 1 meeting; **Leader Partnerships** 5 meetings, 4 with the **Wealden and Rother Rural Partnership Executive Board**, 1 with the **Central Sussex Local Action Group**; **National Trust** 1 meeting; **Natural England** 3 meetings; **Rolvenden Settlement Research Group** 1 meeting; **RSPB** 1 meeting; **South Downs National Park Authority** 2 meetings; **South East Heritage Forum** 1 meeting; **South East Local Economic Partnership** 1 meeting; **Sussex Local Nature Partnership** 2 meetings; **Lund Trust** 2 meetings; **Tunbridge Wells Borough Council** 1 meeting; **West Kent Partnership** 1 meeting; **West Sussex Local Access Forum** 1 meeting; **Woodland Trust Low Weald Steering Group** 2 meetings.







Punnetts Town Welly Walk launch

Big Wildflower Count 2016



## 2

# Co-ordinating action and enabling delivery of the AONB Management Plan

### Community Outreach Programme

**41 primary schools participated in High Weald Heroes (HWH), the JAC's school education programme, with 45 events involving over 3260 learning sessions.**

Activities included:

- Creating **7 new school Welly Walk routes**, launching 3 new Welly Walks and publishing **4 Welly Walk leaflets**.
- Developing and promoting the **Big Wildflower Count 2016** with 6 schools (230 children) participating and the **Whopper Welly Walk 2016** with 4 schools (634 children) participating.
- **7 mapping workshops** both indoors and in school grounds; **6 pre-history workshops** using handling boxes and **4 Lost World arts and science workshops**: rocks and soils sessions (3) fossil clay tiles (1).
- **18 staff advisory sessions**: 3 after-school training sessions, 13 teacher advisory sessions and 2 head teacher meetings.
- **5 school assemblies**: 2 meadows assemblies and 3 Welly Walk assemblies.
- **21 outdoor workshops/walks** including general Welly Walks (9), science (6) and mapping (7).





Pre-history handling boxes were created

## 2

Co-ordinating action and enabling delivery of the AONB Management Plan

An invasive species survey was undertaken by an intern



- **Creation of 5 new education resources:** pre-history handling boxes with information cards for pupils and teachers; a meadows play for assemblies with accompanying powerpoint; landscape art activity cards; rocks and soils activity cards with accompanying powerpoint; and 7 new school-specific spotter sheets.
- Circulation of **3 Enews** to all 83 HWH schools.
- Creating a **'Lost World' arts and science school programme** to support the Crowborough Community Festival Association's month-long celebration of Crowborough's landscape and cultural heritage.
- Recruiting 2 schools (2 groups of 15 pupils) to pilot a **John Muir/High Weald Heroes Award Scheme**.

**Three further education students were given the opportunity to experience the Partnership's work and provided invaluable assistance with its projects.**

- Ben Crisford, a further education student, assisted the staff team with its land management programme—surveying for invasive species and other features and entering, analysing and presenting the data using GIS.
- Ellen Yardley, a recent university graduate, spent 6 weeks map regressing all the roads and public rights of way (PROW) in the High Weald AONB against a range of historic map sources.
- Russell Delhunty, an undergraduate at Liverpool John Moores University, and Conor Strong, an MSc student from Brighton University, both trialled the use of drone technology (using different approaches) to differentiate between improved and more floristically diverse, unimproved grasslands.





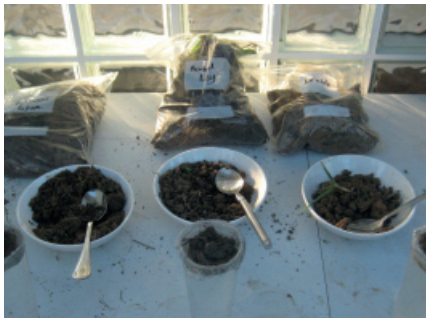


Upper Rother and Dudwell farmer group members

## 2

### Co-ordinating action and enabling delivery of the AONB Management Plan

Soil management workshop



### Land Management Programme

**A new High Weald land management programme was launched with a focus on enabling landowners to develop and implement projects supported by a range of funding mechanisms. Officers gave site-specific advice to 65 landowners, ran 6 events and enabled 26 landscape restoration projects.**

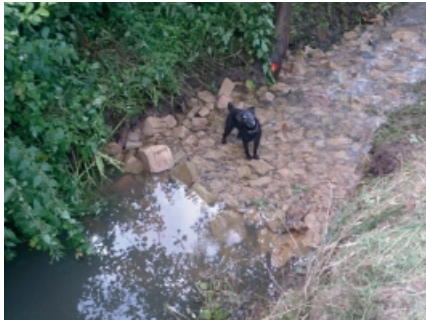
#### Upper Rother and Dudwell Landowner Group

- **A new landowner group with 23 members was launched** and Group priorities identified through a meeting and follow-up questionnaire.
- **4 training events** were delivered: Applying to mid-tier Countryside Stewardship; A Healthy Soils workshop (24 attendees); a Turtle Dove talk (10 attendees); and a Farmland Bird ID training day (20 attendees).
- **Grant application support** (Countryside Stewardship Scheme mid-tier) was provided to 3 landowners.
- **An invasive species survey** of 50km of the River Rother, from Mayfield to Etchingam, and the River Dudwell, from Heathfield to Etchingam, was completed and a report with recommendations for control produced and circulated to landowners.

#### Rother Water Catchment Partnership

- **Trout spawning ground improvements** were made at Doleham Ditch through rock riffle creation, in partnership with the Wild Trout Trust and Internal Drainage Board.
- **Hedge restoration and wetland restoration** works at Church Farm, Sedlescombe and meadow enhancements at Red Barn Field, Sedlescombe and Doleham Farm were supported through grant awards.



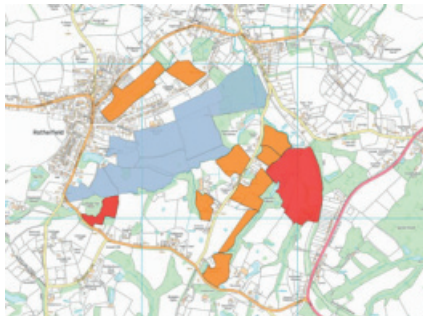


New rock riffle to aid fish spawning

## 2

Co-ordinating action and enabling delivery of the AONB Management Plan

Meadows being enhanced by the Rotherfield community



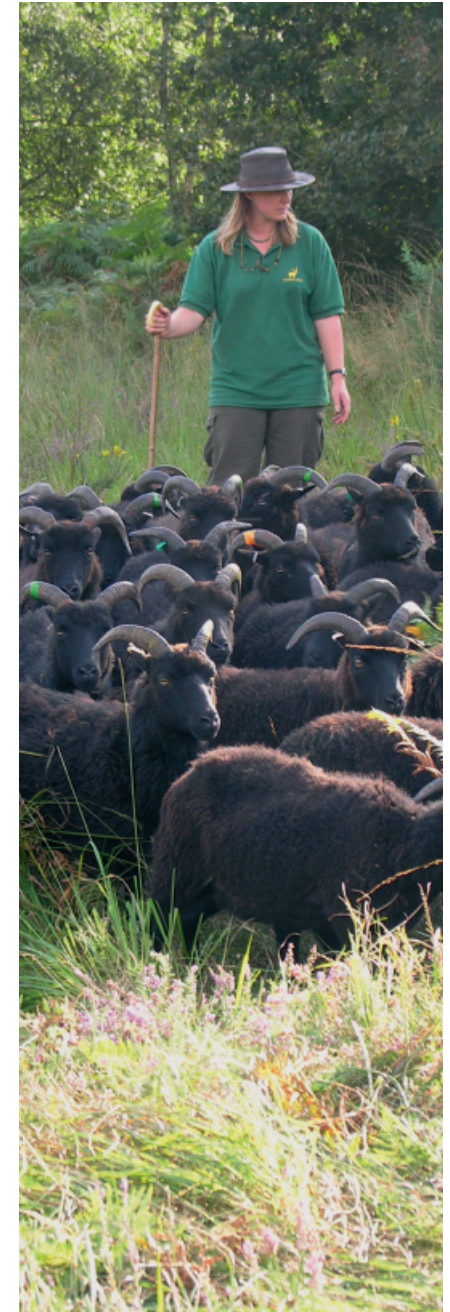
- **Two barn owl boxes** were installed at Quarry Farm, Bodiam.
- **3 wetland projects were developed:** one focused on installation of a PapaPump cattle drinking system to enhance a water quality on the River Dudwell and 2 focused on reedbed creation at Newenden and Benenden.

### Restocking the Weald

- **A part time Restocking Co-ordinator** was appointed to help graziers and landowners jointly invest in developing more accessible, affordable, and well-fenced pasture with adequate water supply.
- 25 farm entrants (potential graziers) and 15 landowners interested in participating in the project with **4 successful landowner/grazier relationships** established.
- **2 steering group meetings** were held and **3 media items** were published and widely distributed: website pages, a promotional leaflet and a media article.

### Rotherfield Village Meadows Project

- **Grant application support** (Sussex Lund) was provided to 4 landowners to enable traditional meadow management (all successful).
- A **landscape-scale management plan** was produced for Rotherfield's meadows.
- The project was promoted through **two events:** the Rotherfield Millennium Green AGM and a community meeting organised by partnership officers.







Power lines to be undergrounded at two sites

## 2

Co-ordinating action and enabling delivery of the AONB Management Plan

Farmland bird identification training



### Energy company initiatives to enhance beauty spots in AONBs and National Parks

- **11 boundary planting and restoration projects were developed** working with 10 landowners within the vicinity of the National Grid power lines at the eastern end of the AONB.
- **Two 11kv power line undergrounding projects were identified** and approved through regional steering group meetings working with UK Power Networks: one at the National Trust's Sheffield Park Garden estate and one at Bedgebury Pinetum.

### General advice and support

- **34 general advisory site visits** were undertaken for landowners across the High Weald; with many receiving an interactive pdf of their site highlighting its history and sources of further information and advice.





Taste of Kent Countryside  
Award Ceremony



# 3

## Championing the High Weald and protected landscapes

---

**Joint working between the areas 15 local authorities was achieved through 9 meetings and related follow-up activities.**

Key activities included:

- 2 Joint Advisory Committee (JAC) meetings to agree reports, the Management Plan Review process, JAC budget 2017/18 and organisational risks and mitigation proposals.
- 3 Management Board meetings and 1 Land Management Programme Panel meeting.
- 3 Officer's Steering Group and 1 Planning and Design Group meeting.

**The value of the High Weald AONB and other protected landscapes were promoted nationally and regionally working with the National Association for AONBs (NAAONB), the South East Protected Landscapes (SEPL) and national and regional task groups.**

Key activities included:

- 1 meeting with new MP for Battle and Bexhill, Hew Merriman to discuss AONB issues.
- Attendance of the NAAONB AGM, regional Protected Landscape Chairman's meeting and NAAONB's annual conference in Shropshire.





www.highweald.org

### 3

#### Championing the High Weald and protected landscapes

#### BREXIT Table Talk event



- 1 NAAONB Lead Officers meeting contributing to the approach to KPI's and Management Plans and 4 SEEPL Lead Officer meetings resulting in the production of a 25-year vision for the protected landscapes of the London City Region in partnership with AECOM.
- 2 SEEPL/NAAONB Planning Officer meetings resulting in release of data by Defra on land use change statistics for AONBs by consultant Peter Bibby and production of joint resource on appeal and court decisions in AONBs by the staff team.
- 1 NAAONB Communication Officer meeting resulting in a national PR strategy and contributions to joint AONB PR such as #Outstandinghour and #Outstandingweek.
- 3 working group meetings: the AONB-led groups on AONB Governance 2025 and the National Grid's Landscape Enhancement Initiative and the Royal Geographical Society's conference working group on tranquillity.
- Sponsorship and assessment of the Taste of Kent Countryside Award, working jointly with the Kent Downs AONB JAC, and sponsorship of the Sussex SPARKs Award for young people undertaking environmental projects, working with the South Downs National Park.

#### General promotion of the area was achieved through:

- 7 enews sent to an average of 2,250 contacts per mailout, 4 media releases sent to 130 media contacts, publication of 17 website news pages and increasing use of Facebook and Twitter.
- Maintenance of www.highweald.org with 104,174 user sessions by 83,145 users and an average time on site of 2.07 minutes (an increase in use of 28% since 2015/16). The 5 most-visited pages were: Walking, the High Weald Landscape Trail, Places to stay, High Weald boundary and Attractions.







Crowborough Community Festival  
'On Top of the Weald' festival

### 3

#### Championing the High Weald and protected landscapes

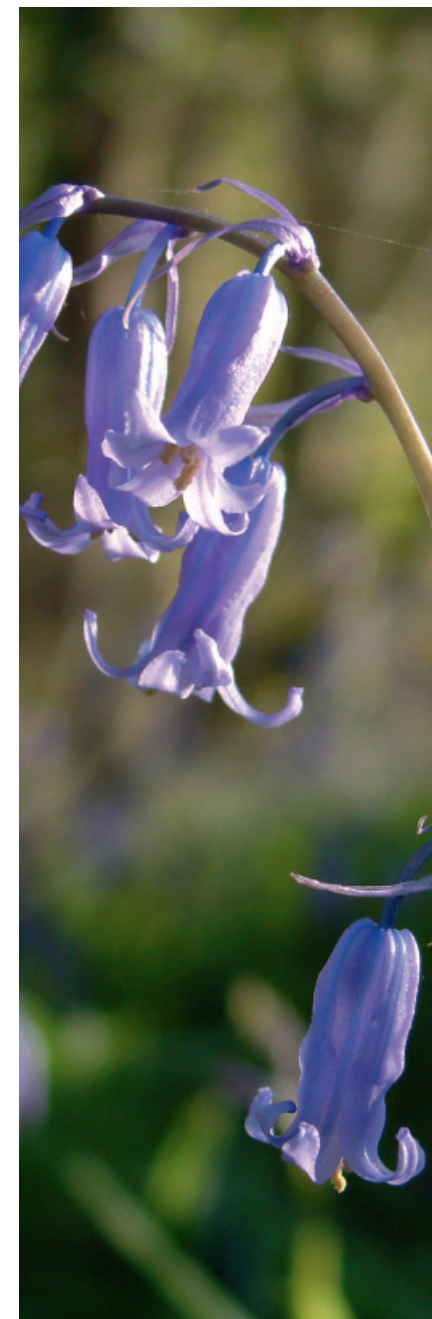
A National Grid grant  
application was submitted for a  
*Beautiful Boundaries* project



- 4 talks to community groups including Weald of Kent Preservation Society, Horsted Keynes WI and Saxonbury WI; 1 guided walk (20 attendees) to support the Wealden and Eastbourne Walking Festival; and 2 field trips for the Durrell Institute of Conservation and Ecology and Human Ecology and Environmental Science undergraduates at Kent University.
- An evening Table Talk event – What BREXIT will mean for Agriculture in the Weald, led by Informa Agribusiness Intelligence, and organised in partnership with The Bell, Ticehurst.

#### **Resources for delivering AONB Management Plan objectives were secured through 7 contracts/grant awards and 4 proposals were submitted to enable activities in 2017/18.**

- A grant award of £259,985 for the JAC Partnership's activities 2016/17 was confirmed by Defra.
- A 5-year contract with Natural England's Countryside Stewardship Facilitation Fund was secured for operation of the Upper Rother and Dudwell Landowner Group.
- A contribution towards water catchment activities was secured from the Environment Agency and Defra's Water Catchment Partnership Fund.
- A collaboration between the Lund Trust and the AONB Partnership was developed to promote and manage Sussex Lund, the grant scheme of Lisbet Rausing and Peter Baldwin.
- A contribution of £10,000 was made by the Peter William George Smith Charitable Trust to the veteran tree survey of the Dallington Forest.
- A sum of £10,000 was awarded from the Heritage Lottery Fund's Sharing Heritage programme to the Crowborough Community Festival Association's first 'On Top of the Weald' Festival.







Funding for a veteran tree survey was secured

### 3

#### Championing the High Weald and protected landscapes

Countryside Stewardship Facilitation Fund farm visit



Proposals were made to:

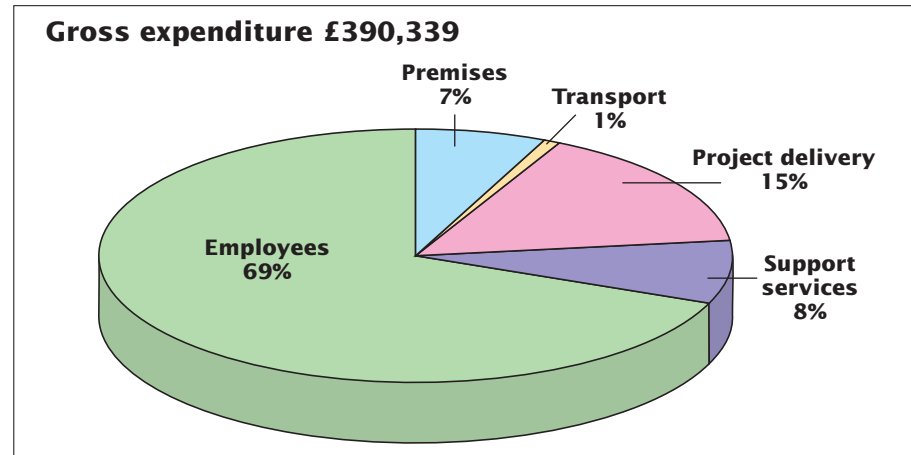
- Heritage Lottery Fund's Landscape Partnership Scheme Fund for a £2.1 million grant towards a £2.7 million, predominately Kent-focused, landscape project.
- National Grid's Visual Impact Assessment Landscape Enhancement Initiative for a £199,860 contribution towards a £266,480 boundary restoration project.
- Natural England for a landscape study of Ashburnham estate involving co-ordinating involvement of specialists (project retracted).
- Defra's Protected Landscapes Fund for the 2017-18 contribution to the JAC's work.
- Defra's Water Catchment Partnership Fund 2017-18 working with the Environment Agency, Kent Wildlife Trust and Sussex Wildlife Trust.
- Gatwick Airport Community Trust Fund for a contribution to developing Welly Walks through the JAC's Education Programme.



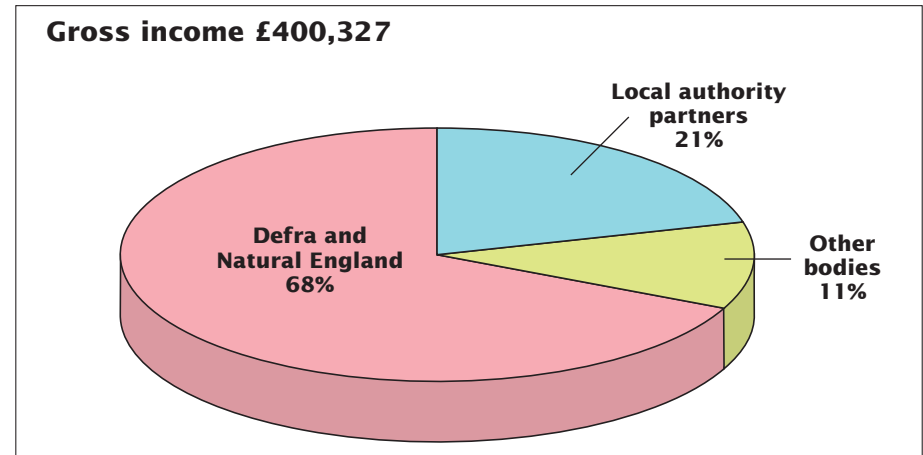
# Financial summary

1 April 2016 to 31 March 2017

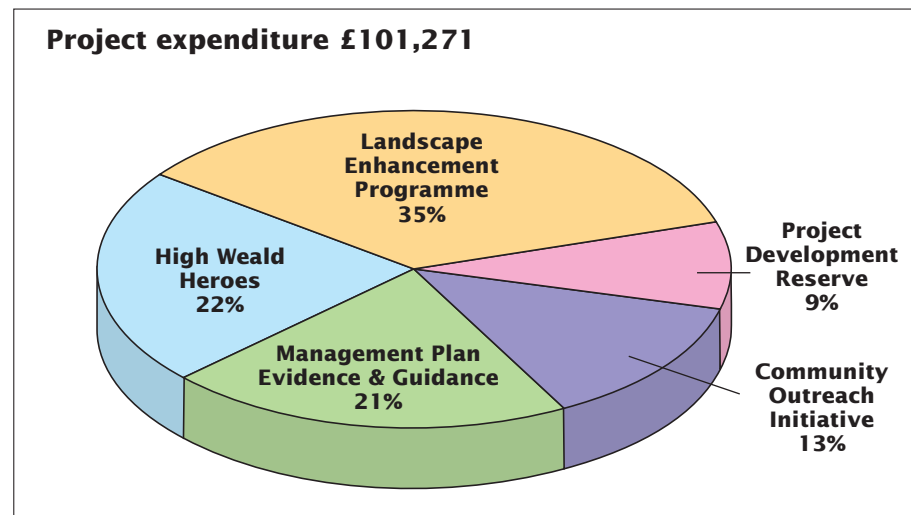
## Total expenditure



## Total income



## Expenditure by project



The final position for the year was a reserve of £125,000 at 31 March 2017, which includes the £9,987 surplus for 2016/17.

# High Weald Joint Advisory Committee

*Working together to care for one of England's Finest Landscapes*

The primary purpose of the JAC is to:

- conserve and enhance the natural beauty of the AONB.

The JAC will also:

- increase understanding and enjoyment by the public of the special qualities of the AONB.
- seek to foster the economic and social well-being of local communities within the AONB.

The High Weald staff team works on behalf of the JAC to achieve these purposes, guided by the High Weald AONB Management Plan and in accordance with a 3-year business strategy. An Officer's Steering Group (OSG) advises the Management Board and JAC.

Representatives of the JAC, Management Board, OSG and staff team for 2016/17 were as follows:

## **Joint Advisory Committee and Officer's Steering Group**

### **Chairman**

Mrs J Davison

### **Vice-chairman**

Councillor B Kentfield

### **Officer's Steering Group Chairman**

David Marlow

### **Natural England**

Laura Newland

---

High Weald  
Joint Advisory Committee

---



**East Sussex County Council**

Councillor Mrs S Tidy  
Virginia Pullan

**West Sussex County Council**

Councillor B Acraman  
Tim Dyer

**Kent County Council**

Councillor M Balfour  
Elizabeth Milne

**Surrey County Council**

Councillor M Sydney  
David Greenwood

**Wealden District Council**

Councillor Mrs R Moore  
Marina Briginshaw  
Natalie Bumpus (from February 2017)

**Rother District Council**

Councillor B Kentfield  
David Marlow

**Hastings Borough Council**

Councillor Richard Street  
Murray Davidson

**Mid Sussex District Council**

Councillor C Hersey  
Jennifer Hollingum

**Horsham District Council**

Councillor Mrs E Kitchen  
Vacant  
James Overall (from February 2017)

**Crawley Borough Council**

Councillor Mrs T Rana  
Tom Nutt

**Tunbridge Wells Borough Council**

Councillor Mrs J Soyke  
David Scully

**Sevenoaks District Council**

Mrs J Davison  
Helen French

**Ashford Borough Council**

Councillor A Pickering  
Matthew Nouch

**Tonbridge & Malling District Council**

Councillor H Rogers  
Jenny Knowles

**Tandridge District Council**

Councillor Mrs L Lockwood  
Vacant  
Sarah Thompson (from January 2017)

**JAC Co-optees**

Recreation/Leisure  
Mrs A Field, Forestry Commission  
Community/Economy  
Mr J Leggett, Action in Rural Sussex  
Landowners  
Mr R Edwards, Country Land and Business Association  
Farming  
Mr W White, National Farmers Union

**JAC Management Board**

Mrs J Davison  
Councillor C Hersey  
Councillor B Acraman  
Councillor M Balfour  
Councillor B Kentfield  
Councillor R Moore  
Councillor M Sydney  
Councillor Mrs S Tidy  
Laura Newland

**Clerk to the JAC**

Samantha Nicholas

**Treasurer to the JAC**

Marie Nickalls (until December 2016)  
Mark Whiffin (From January 2017)



## High Weald AONB Staff Team

*Advising on the management of one of England's Finest Landscapes*

The partnership delivered its 2016/17 work programme with a staff team averaging 6.4 FTEs.

### Core

**Co-Directors** – Sally Marsh (0.62FTE)/Jason Lavender (0.62FTE)

**Business Manager** – Gerry Sherwin (0.8FTE)

**Planning Adviser** – Claire Tester (0.8FTE) from May 2016

**Landscape Adviser** – Charles Winchester (1FTE)

**Team Support Officer** – Samantha Nicholas (0.8FTE)

### Projects

**Cultural Heritage Adviser** – Matt Pitts (0.8FTE)

**Land Management Adviser** – Tamara Taylor (0.4FTE) until December 2016

**Education Officer** – Rachel Bennington (0.6 FTE)

The Partnership provided office accommodation, administrative support and guidance to the Woodland Trust's Low Weald PAWS Officer throughout 2016/17.

Team skills were developed through a 2-day QGIS training event at Southampton University, attended by five staff, and a 3-day Stakeholder Participation training event attended by one member of staff.

Internal projects included establishing a Sharepoint filing system as part of a wider East Sussex County Council programme and installing QGIS to enable all team members to access and use GIS for day-to-day work.

---

High Weald  
Joint Advisory Committee

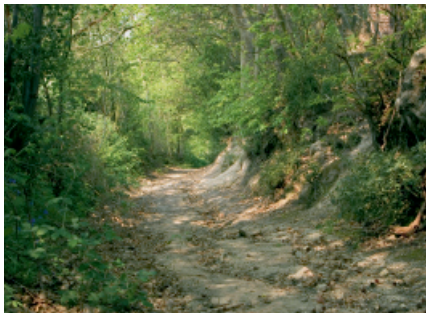
---



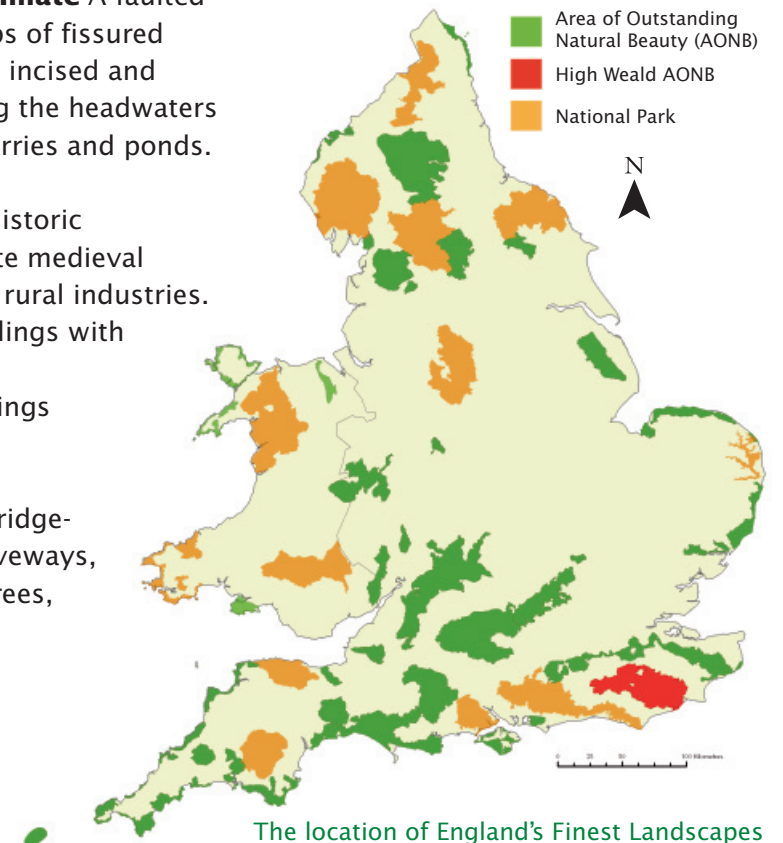


# The High Weald Area of Outstanding Natural Beauty

The essential character of the High Weald Area of Outstanding Natural Beauty (AONB) was established by the 14th century and the area is therefore considered to be one of the best surviving, coherent medieval landscapes in Northern Europe. The five key components of its character are:



- **Geology, Landform, Water Systems and Climate** A faulted landform of clays and sandstones with outcrops of fissured sandrock and ridges running east-west, deeply incised and intersected with numerous gill streams forming the headwaters of rivers. A high density of extraction pits, quarries and ponds.
- **Settlement** A very high density of dispersed historic settlements of farmsteads and hamlets with late medieval villages founded on trade and non-agricultural rural industries. A dominance of traditional timber-framed buildings with steep roofs often hipped or half-hipped and an extraordinarily high survival rate of farm buildings dating from the 17th century or earlier.
- **Routeways** Ancient routeways in the form of ridge-top roads and a dense system of radiating droveways, often narrow, deeply sunken and edged with trees, wildflower-rich verges and boundary banks.






---

## The High Weald Area of Outstanding Natural Beauty

---



- **Woodland** A great extent of interconnected ancient woods, steep-sided gill woodlands, wooded heaths and shaws, generally in small holdings with extensive archaeology and evidence of long term management.
- **Field and Heath** Small, irregularly-shaped and productive fields bounded by hedgerows and small woodlands predominantly of medieval origin and managed historically as a mosaic of small agricultural holdings typically used for livestock grazing. Distinctive zones of heaths and inned river valleys.

These fundamental characteristics of the High Weald AONB are enriched by locally distinctive and nationally important details. These include castles, abbeys, historic parks and gardens, hop gardens and orchards, oast houses and parish churches, veteran trees and local populations of key threatened species.

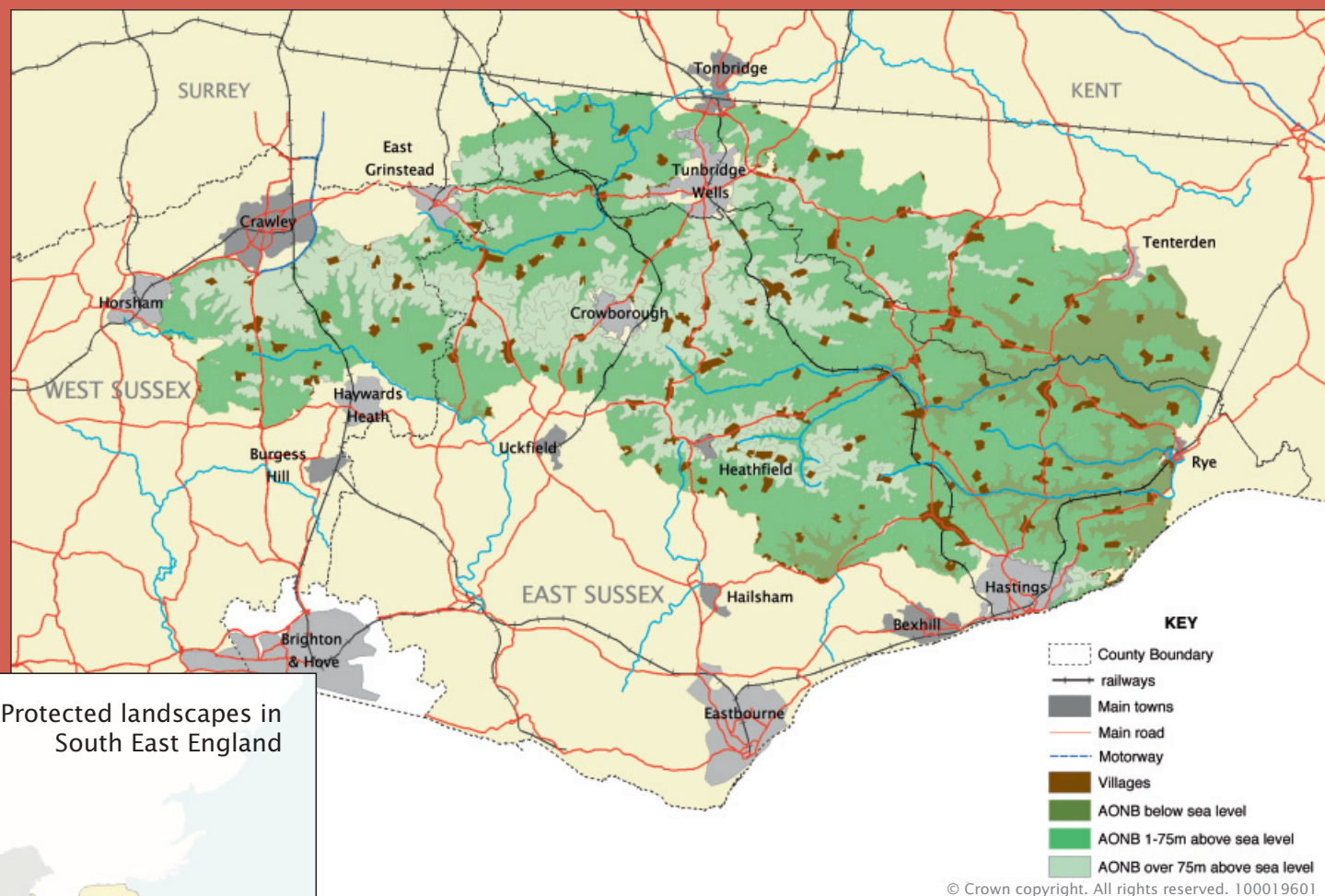




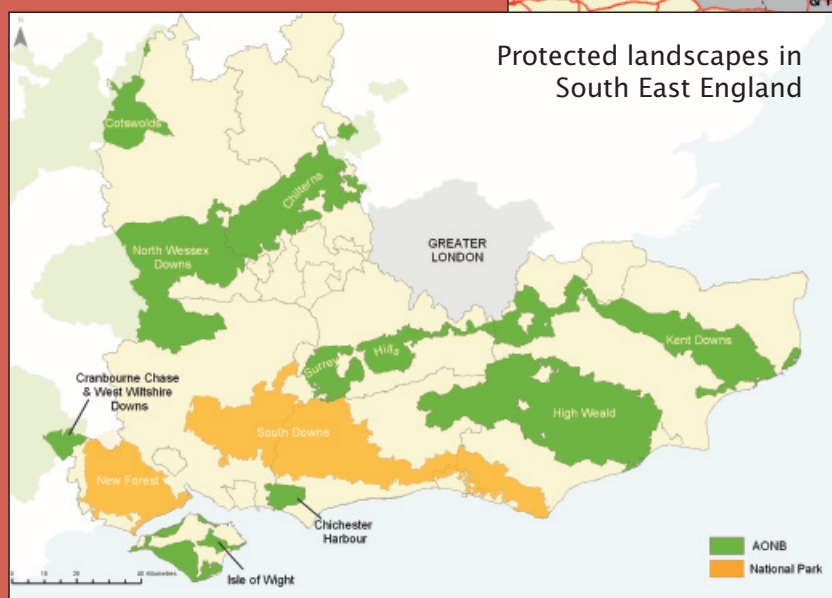
# HIGH WEALD JOINT ADVISORY COMMITTEE

Woodland Enterprise Centre  
Hastings Road  
Flimwell  
East Sussex TN5 7PR  
T: 01424 723011  
E: [info@highweald.org](mailto:info@highweald.org)  
W: [www.highweald.org](http://www.highweald.org)

The annual review is published by the  
High Weald AONB Unit on behalf of  
the High Weald Joint Advisory  
Committee (JAC).



Reproduced from Ordnance Survey Mapping with the permission of the Controller of H.M. Stationery Office. Crown Copyright.  
Unauthorised reproduction infringes Crown Copyright and may lead to prosecution or civil proceedings.  
East Sussex County Council – 100019601; West Sussex County Council – 100018485; Kent County Council – 100019238; Surrey  
County Council – 100019613



Published by the High Weald Joint Advisory Committee May 2017  
All pictures in the publication © High Weald JAC unless otherwise stated