



High Weald Joint Advisory Committee Annual Review 2014-15

*Working together to care
for one of England's
Finest Landscapes*



HIGH WEALD
One of the
AONB Family



The High Weald Joint Advisory Committee is a partnership between: East Sussex, West Sussex, Kent and Surrey County Councils; Horsham, Mid Sussex, Tandridge, Sevenoaks, Wealden and Rother District Councils; Tunbridge Wells, Hastings, Ashford, Tonbridge and Malling and Crawley Borough Councils; Defra; Natural England; and organisations representing farming, forestry, community, business and recreation interests.

Contents

Foreword	3
1 Preparing, monitoring and reviewing the AONB Management Plan	5
2 Co-ordinating action and enabling delivery of the AONB Management Plan	7
3 Championing the High Weald and AONBs	12
4 Providing advice and guidance to our partners on CRow, Section 85	17
5 Adding value to our partners' wider landscape and environmental objectives within the High Weald AONB	19
Financial summary	22
High Weald Joint Advisory Committee	23
The High Weald Area of Outstanding Natural Beauty	26



Councillor Brian Kentfield,
Chairman of the High Weald
Joint Advisory Committee (JAC)



Foreword

Welcome to the High Weald AONB Partnership's annual review for 2014/2015. It's not been a year of plain sailing by any means as we continue to grapple with the consequences of austerity and its impact on our staff team's financial and personnel resources as well as those of our key partners. Despite this, we are taking measures to ensure that the AONB Partnership remains strong and continues to be supported by a small dedicated team providing specialist technical advice to conserve and promote the value of this nationally protected landscape.

This annual review shows yet again it has been another full and very successful year for the AONB Partnership, which has continued to engage a wide range of people from the vibrant community in and around this unique landscape and to raise awareness of the local circumstances and specific needs of the High Weald.

An example of how well we seek to engage others and raise awareness of rural issues is our 'Restocking the Weald' work. It is very clear that the government and others with an interest in agriculture and the rural economy do recognize there is a problem with the exclusion of young people who are desperate to farm but have little or no land of their own yet there seems to be very little tangible work to address this in policy or support. Our proposed pilot project outlines the causes of a loss of livestock in the area and makes a series of recommendations to reverse this trend by creating new opportunities for livestock farming managed by skilled entrants to gain a quick foothold in farming but without the hurdle of owning land. And should this proposal be supported it would, at the very least, offer the government a very good opportunity to establish a real-life example and, quite rightly, show it is committed to supporting agriculture, the rural economy, and young farmers.



I am proud that so much of the work of the AONB Partnership is enthusiastically supported by a wide range of individuals, community and interest groups, local and national organizations and, of course, our Committee Members and their officers – my thanks to you all.



Councillor Brian Kentfield

Chairman of the High Weald Joint Advisory Committee (JAC)
June 2015

Foreword





AONB Management Plan
2014-2019

Unconventional hydrocarbon
resources



1

Preparing, monitoring and reviewing the AONB Management Plan

Following publication of the High Weald AONB Management Plan 2014-2019 in March 2014 the staff team focused on promoting the Plan and publishing the Plan's supporting evidence in accessible formats.

Activities included:

- **Distribution of the new Management Plan** to 15 local authorities members and officers.
- Wider promotion of the Plan via media releases, updated website pages and news.
- Publication of post-2004 **Management Plan research reports** (with summaries) in a refreshed website publications library.
- Production of draft High Weald socio-economic and environment profiles.
- Production of draft expanded character statements for AONB key components: Geology; Settlement and Routeways.
- Production of a report on **'The International Importance of Gill Woodland in Kent and Sussex'**.
- Production of an information note on the current situation for **farming** in the High Weald.





Proposed housing numbers map

1

Preparing, monitoring and reviewing the AONB Management Plan

Exploratory drone flights

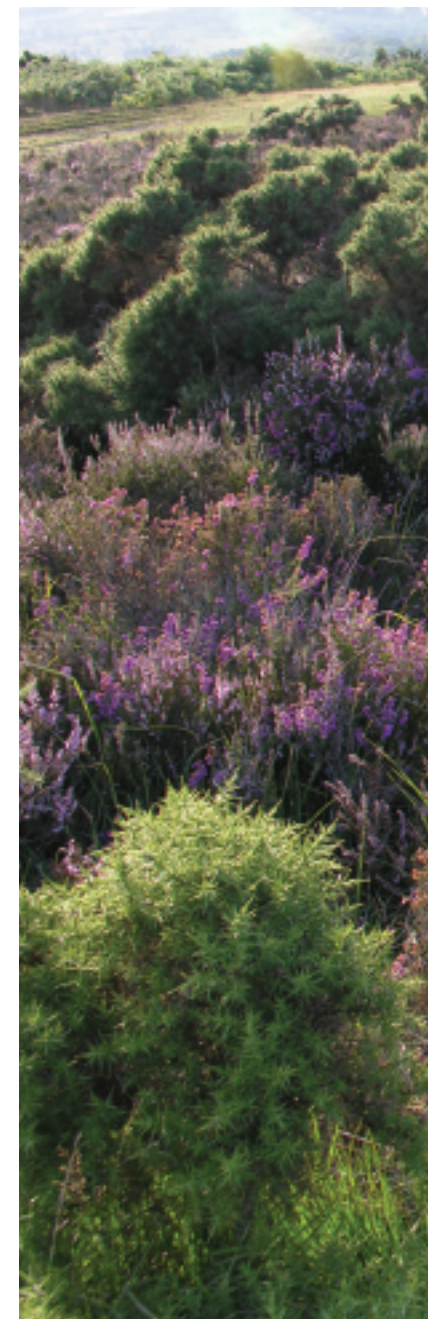


- Production of an information note on the role of **woodland and grassland for carbon storage**.
- Production of an information note on the **unconventional hydrocarbon resources** present in the High Weald, drawn from the the summary of the British Geological Survey's findings.
- An update of the High Weald proposed **housing numbers and map report** using new figures from local authority partners.
- Production of a **GIS data summary table** listing all of the 14 AONB character component datasets along with information on when and how they were created and by whom (metadata).

A 3-year project to establish the best approach for monitoring High Weald AONB landscape condition was initiated.

Activities included:

- Developing a **methodology for using drone technology** for monitoring landscape condition working in partnership with Liverpool John Moores University.
- Exploring the scope for drone technology to identify unimproved meadows working in partnership with Plantlife's HLF-funded national project Magnificent Meadows, Sussex Wildlife Trust and Dolphin Ecological Services.





Welly Walk launch

2

Co-ordinating action and enabling delivery of the AONB Management Plan

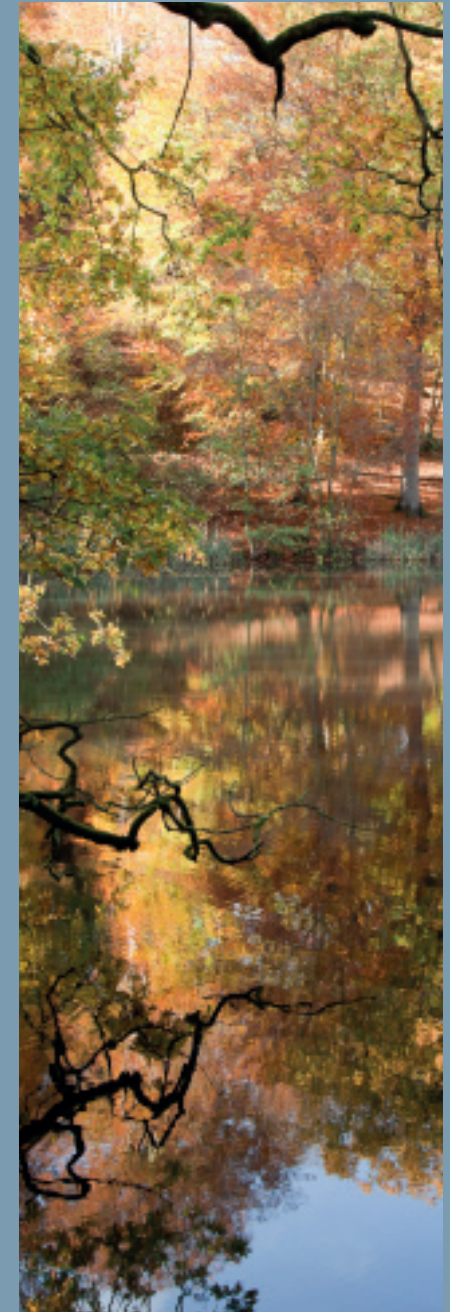
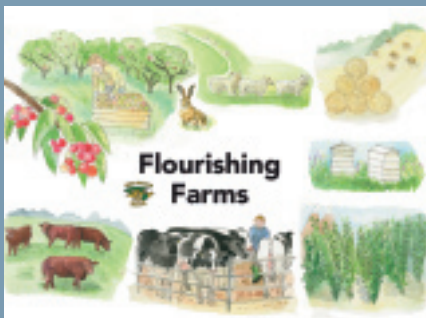
Community

25 primary schools participated in High Weald Heroes (HWH), the JAC's school education programme, with 31 events involving over 1793 learning sessions.

Key activities included:

- Creation of **3 new school Welly Walk routes** and the publication of **3 Welly Walk leaflets**.
- **7 mapping workshops**, both indoors and in school grounds.
- **11 staff advisory sessions**; 3 after-school training sessions and a further 8 teacher advisory sessions.
- **4 school assemblies**; 3 High Weald landscape assemblies and 1 Welly Walk assembly.
- **24 outdoor workshops/walks** including general Welly Walks (7) plus **new themed workshops/walks**: Saxon, Stone Age (8), Tudor and Science.
- **Production of 4 new education resources**: HWH posters - Brilliant buildings, Flourishing farms, Historical happenings, Lush landscapes, Magical moments, Wicked wildlife; a High Weald Tree Spotter Sheet; an Anglo-Saxon Activity Pack; and a new Topic Web setting out how HWH resources can support curriculum subjects.

Flourishing farms spotter sheet





Fence at Folly Wildlife Trust

2

Co-ordinating action and enabling delivery of the AONB Management Plan

Coppicing Turner Avenue



- Circulation of **3 enews** to all 80 HWH schools.
- Recruitment of a **new part-time Education Officer**.

Through the Community Landscape Fund the JAC awarded £5703 of grant-aid to 7 projects supporting 11 organisations, business and community groups to help achieve AONB Management Plan objectives.

Ashdown Forest Conservators: Cattle crush

The Conservators used the grant to purchase a cattle crush after the successful trial of cattle grazing on the heathland. The crush will allow them to safely handle the breeding herd of Galloway cattle and to grow the herd. **Awarded: £1,000**

Darvell Community: Bird tagging and survey

Darvell Community used the award to purchase bird tagging equipment so that the school can assess woodland bird species and develop the pupil's understanding of the importance of woodland habitats for native and visiting species.

Awarded £500

Folly Wildlife Trust: Grazing project

The Folly Wildlife Trust has recently purchased a new site for the wildlife hospital which adjoins the RSPB reserve at Broadwater Warren. The grant was used to erect fencing which will enable grazing to be used as a tool for restoring the lowland heath. **Awarded: £1000**

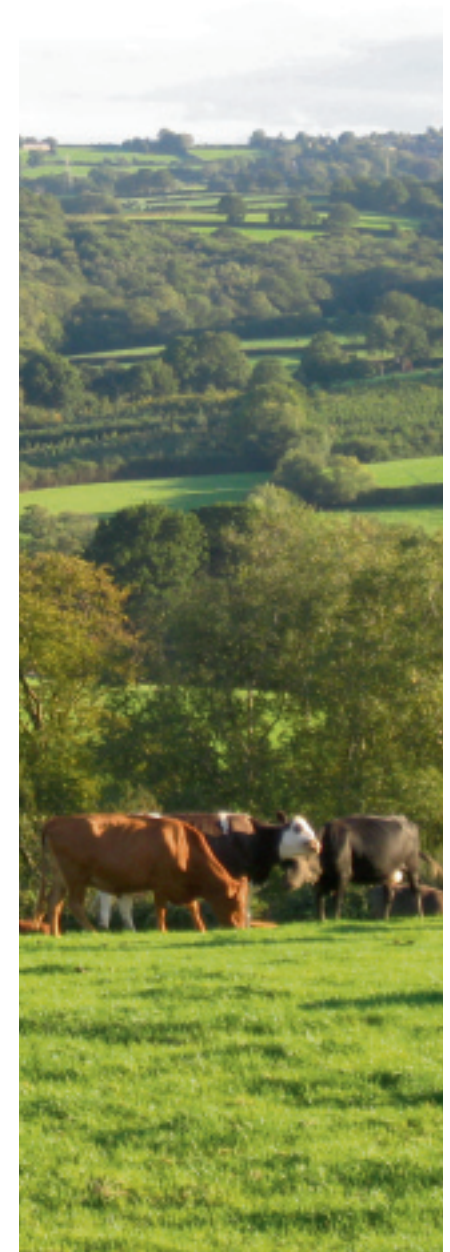
Keepers Coppicing: Hedge planting

Richard Hare (a High Weald coppice worker) used the award to re-establish hedgerows along an ancient boundary.

Awarded: £1,000

Kent High Weald Partnership: Turner Avenue youth project

Turner Avenue is an estate in Cranbrook that has had on-going issues with anti-social behaviour from young people. The award supported a programme to engage the local youth with their open spaces and the surrounding community. Thirty five young people and adults attended sessions on the history of





Wadhurst Star Party

2

Co-ordinating action and enabling delivery of the AONB Management Plan

Medieval boat building event



coppicing, the cloth industry, droving and medieval woodcraft. As a result of their experience they have produced a plan to raise funds and work with young people to develop an outdoor space on the estate. **Awarded: £2,000**

Sussex Pony Grazing & Conservation Trust: Fundraising training

The Trust was awarded a grant to send two of its members on a fundraising course. The Trust is in the process of raising additional funds to pay for much needed equipment and is seeking to reduce its reliance on the Government's Environmental Stewardship Scheme. **Awarded: £206**

Wadhurst Star Party

The award was used to hold a Dark Skies community event at Uplands Community College in February. Over 300 people attended the evening and were able to look at planets through specialist telescopes, learn more about the High Weald night sky through an indoor planetarium and gain a better understanding of the importance of reducing light pollution. The event was led by the High Weald AONB staff team working with Wadhurst Parish Council, Wadhurst Astronomy Society, Wadhurst Primary School and Uplands Community College. **Awarded: £497**

Landowners

The Living Woods Project, a 3-year initiative to engage landowners and communities in Weald woodlands completed its third and final year, funded by the Heritage Lottery Fund and the Woodland Trust.

Over 3 years the Project engaged over **2000 people** delivering:

- **107 woodland advisory visits**, with 72 landowners receiving site-specific, interactive pdfs of their site highlighting its history and sources of further information and advice.





Sourcing local timber

2

Co-ordinating action and enabling delivery of the AONB Management Plan

Launch of the solar kiln



- **36 community events** including presentations on ‘Woodland in the Making of the High Weald’ to community groups, a series of 3 events on medieval timber and boat-building techniques and a secondary schools events programme.
- **12 specialist events** including community archaeology walks and surveys, woodland species identification and woodland management events.
- **13 networking events** including attendance at Weald Woodfair and working with Datatag to label land-based businesses’ equipment, making it less vulnerable to theft.
- **A finale event ‘Taking Root’** in partnership with The Bell, Ticehurst. A thought-provoking evening celebrating woodlands from different perspectives led by guest speakers.
- **9 landowner events** exploring management for game, deer and woodfuel and woodland pond management.
- **6 publications** including a ‘Woodland in the Weald’ leaflet and 5 videos: Identifying 10 common High Weald woodland plants; Using mechanical harvesting equipment within a coppice woodland; Using timber for heating; Benefits of using wood fuel and some tips for seasoning and storing log firewood; and a case study about a resident’s experience of installing a log fuel central heating systems, flagging up some of the practicalities of using such systems.
- **An innovative secondary school programme** including: a **Woodland Careers Project** enabling A-level students to meet woodland businesses and to creatively interpret the career opportunities to their colleagues and; a **Solar Kiln Project** with Skinners’ School, Tunbridge Wells involving the construction of a solar kiln as a mechanism for the school to dry high quality wood sourced from sustainably managed woodlands for use in Design and Technology (D&T) classes.





Datatag event

2

Co-ordinating action and enabling delivery of the AONB Management Plan

Woodland in the Weald leaflet



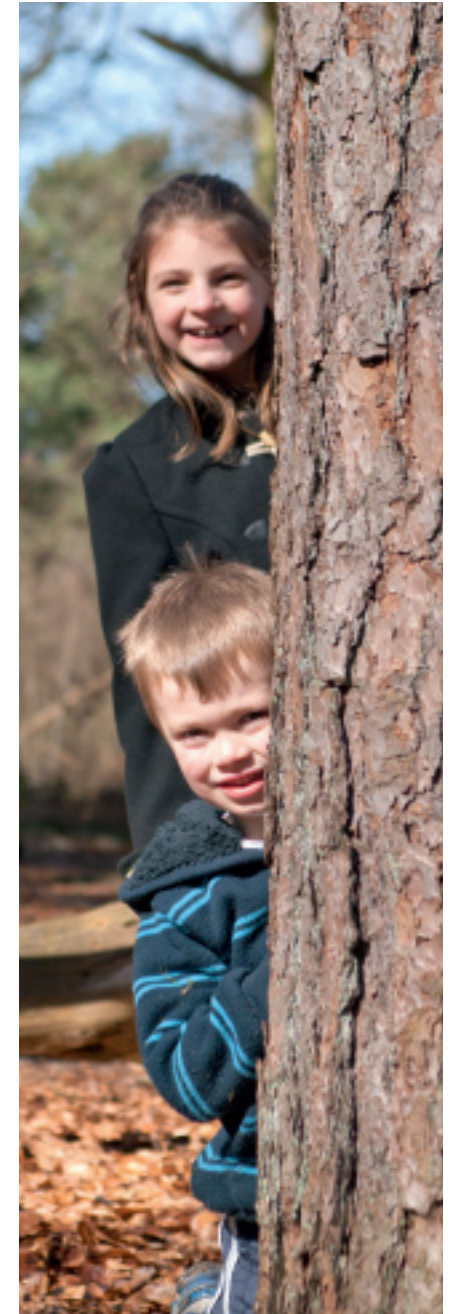
Additionally the staff team provided opportunities for young people to experience its work.

- Georgina Strapp, a recent graduate, assisted the staff team with its communication activity, particularly social media and the Living Woods finale event.
- Hannah Moody, a secondary school student, spent 5 days data gathering for the website and researching volunteer groups in the AONB.

Through the Brede Valley Farm Habitat Project the grants panel awarded £35,000 of grant-aid to 5 projects to help landowners achieve AONB Management Plan objectives.

Activities included:

- Employment of Paul Cobb, an independent farm environment advisor, to co-ordinate the Brede Valley Farm Habitat Project.
- **Site visits with 12 landowners** and farmers during the late summer of 2014 to provide hands-on advice on developing and implementing habitat creation and improvement works.
- Assessing grant applications from 5 farms for funds to support habitat improvement works.
- Completion of conservation works during the winter 2014/15 including **wetland and ditch restoration, pond restoration and the enhancement of a wildflower grassland.**
- Submission of a further 5 applications in March 2015.





Winners of the Kent Food and Farming Landscape Award

Corporate sponsors event



3

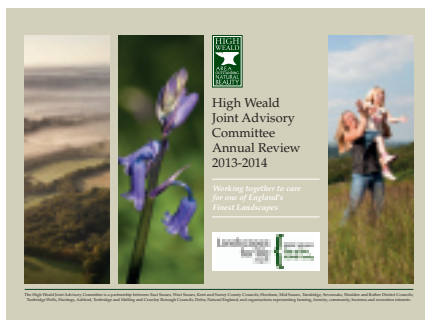
Championing the High Weald and AONBs

The needs of the High Weald AONB and other protected landscapes were promoted nationally and regionally working with the National Association for AONBs (NAAONB), the South East region AONB chairs and leaders, and national and regional task groups.

Key activities included:

- A meeting with **Greg Barker MP and High Weald Patron** to discuss AONB issues.
- **Chairing the South East and East Protected landscapes lead officer's meetings** held quarterly and including a 2 day event on: London expansion and housing development pressure; woodfuel and social forestry; and landscape policy development and monitoring.
- Attending **South East and East Region planning liaison** meetings.
- Supporting the JAC Chairman at NAAONB AGM and regional Chairman's meeting.
- Meetings and communications with AONB lead officers to support national discussions on **approaches to gathering and disseminating AONB data and sharing resources regionally** leading to reviewing the Surrey Hills AONB Management Plan Strategic Environment Assessment.
- High Weald representation on **2 NAAONB** learning sets: Peer-to-peer Mentoring for Corporate Fundraising and Sustainable Tourism.





Annual Review 2013-2014

3

Championing the High Weald and AONBs

RGS Discovering Britain walk guide



- Attendance of the **NAAONB's annual conference**, 'Landscapes for Life', in Penrith.
- Sponsorship of the **Kent Food and Farming Landscape Award** working jointly with the Kent Downs AONB JAC.
- Supporting national joint working with the Royal Geographical Society to promote understanding and exploration of AONBs.

67 promotional items were produced and distributed.

- **19 enews** were sent to an average of 2,250 contacts per mailout.
- **9 media releases** were circulated to local media and **28 news pages** published on **www.highweald.org**
- **8 blogs** were produced on subjects covering AONB issues such as fracking, projects such as drone use and exploring the High Weald.
- A downloadable **Annual Review 2013-2014** was published.
- A **letter was sent to all 44 prospective Members of Parliament** reminding them that AONBs are national assets and people are passionate about them and care deeply about their future.
- Leaflets, in particular Historical Happenings and Woodlands in the Weald were distributed to schools and visitor attractions.
- A **new 6-mile walk** centred on Burwash with a **downloadable audio guide and 36 page written guide** was developed for the Royal Geographical Society's prestigious Discovering Britain project, which aims to bring the history of the British landscape alive through interpreted walks.





Interactive online map

3

Championing the High Weald and AONBs

Online timeline artwork



www.highweald.org was maintained and developed with 61,765 user sessions by 46,697 users and an average time on site of 2.46 minutes (a doubling of site users and the amount of site spent on the site since 2013-14).

- The Explore section remained the most popular section with the most visited pages being: walking, the High Weald boundary, places to stay, events calendar and the interactive map.
- Top downloads were: High Weald boundary map (1918), High Weald Biodiversity Statement (612), Socio economic characteristics of farms (585), Chapter 1 of the High Weald Landscape Trail booklet (540) and the High Weald Management Plan 2014-2019 (513).
- Developments included: new pages to support Dark Skies work, in particular the Wadhurst Star Party; revamping of the management plan, nature reserve and seasonal interest pages; checking and updating the data supporting the interactive visitor map (300 data entries); and publication of the updated map.

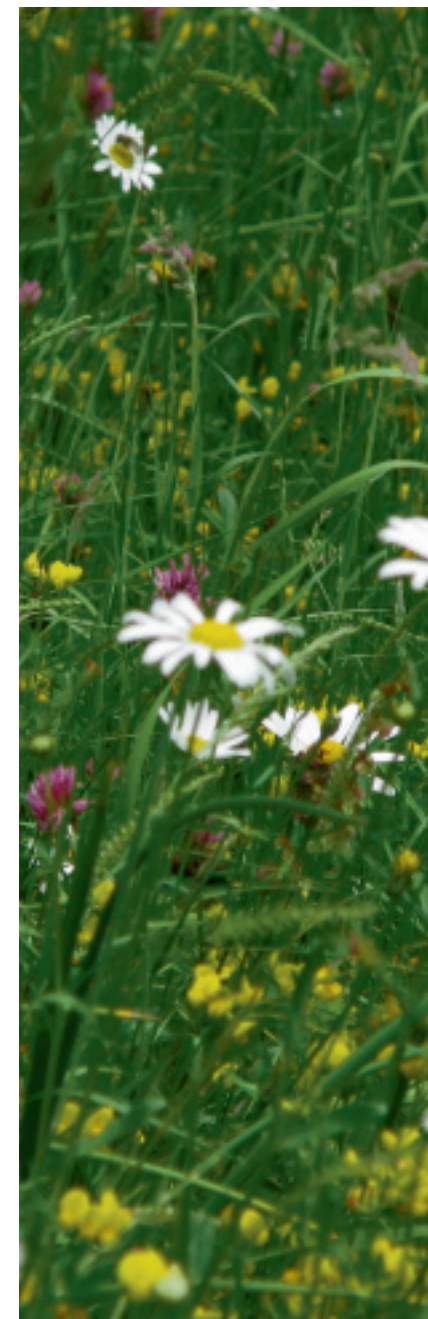
Facebook and Twitter were increasingly used to promote AONB activities achieving 1099 twitter followers and 178 facebook friends.

- 1 twitter campaign was run, Tweet @ The Geological Society, to engage the public in the AONB's geological heritage and encourage High Weald entries to the 100 Great Geosites competition.

The South East's protected landscape's sustainable tourism website www.our-land.co.uk received 5027 unique visitor enquiries, 1236 of which were to High Weald businesses.

Activities included:

- **Maintenance of www.our-land.co.uk** by Responsible Travel with input from protected landscapes achieving 151,000 users, 181,000 sessions, 680,000 page views and a 20% increase in session duration. Enquiries per landscape were as follows:





Slow Bodium

3

Championing the High Weald and AONBs

Online landscape quiz



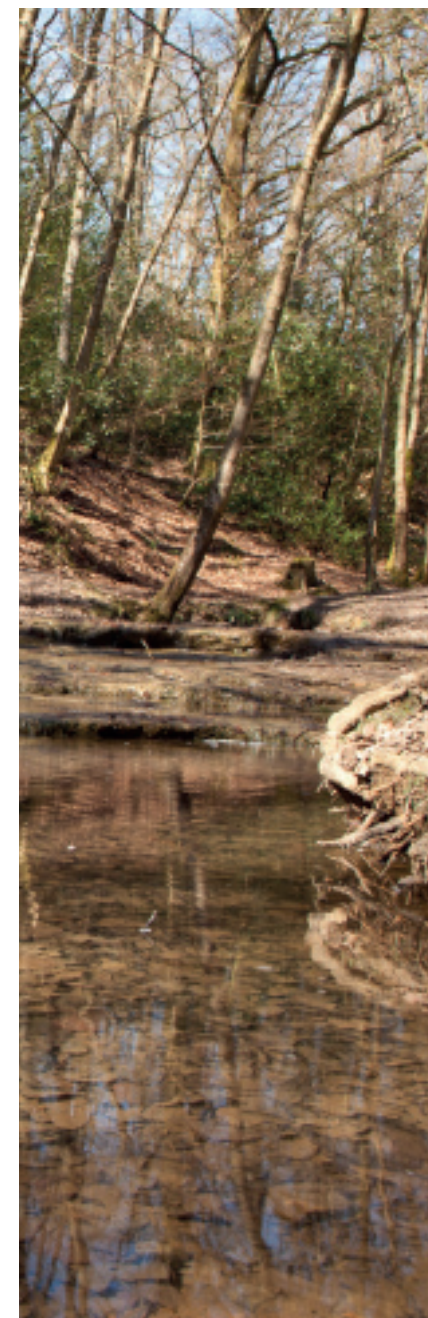
Chilterns (791); Cotswold (532); High Weald (1236); Isle of Wight (358); Kent Downs (571); New Forest (813); North Wessex Downs (350); South Downs (1362) and Surrey Hills (613).

- Creating and testing an **online Landscape Awareness Quiz** for each of the South East's protected landscapes.
- Producing a **template for 'Slow High Weald' guides** to promote local exploring opportunities around clusters of Our Land businesses.
- Producing a protected landscapes map for the website.
- Producing a short to mid-term project plan on behalf of the Our Land Partnership.
- A review of the Project's aims and objectives and production of a development plan.

4 funding proposals were developed and submitted to support the JAC's work, 3 contracts were awarded.

Proposals were made to:

- **Defra's Protected Landscapes Fund** for the 2015-2016 contribution to the JAC's work.
- **Defra's Water Catchment Partnership Fund** 2015-16 working with the Environment Agency, Kent Wildlife Trust and and Sussex Wildlife Trust.
- **Historic England** under their National Heritage Protection Programme for 'Fieldsapes', a project to pilot a rapid assessment methodology for determining the historic value of fields and interpretative material for planning officers on field heritage protection.
- **UK Power Networks** for a project to support 4 large-scale energy-focused school/community events.





Restocking the Weald

3

Championing the High Weald and AONBs

Fieldsapes



Other projects were developed in preparation for future bidding activity.

The development of the Restocking the Weald Initiative, a concept for securing the future of livestock farming in the High Weald's working landscape was ongoing with activities as follows:

- Development of the concept through to a **feasibility study** and **proposal for implementation**, produced by Dr Bill Vorley, Principal Researcher, International Institute for Environment and Development.
- Promotion of the Initiative through a consultation event and a number of other forums including a presentation to the East Sussex County Council Economic Scrutiny Panel and 2 presentations to the Prince of Wales's International Sustainability Unit.

The staff team also supported a proposal 'Smart and Strang: Professors of Peculiar Art' developed by Strangeface for submission to the Heritage Lottery Fund.

2 Joint Advisory Committee (JAC) meetings, 3 JAC Management Board meetings, 3 Officers Steering Group meetings (including 1 meeting of the Planning and Design group) were held and the Community Landscape Fund Panel met virtually as required.

Key outcomes were:

- Sign-off of the statutory accounts and the JAC budget 15/16.
- Community Landscape Fund grant awards.
- Agreement of organisational risks and the associated mitigation plans.
- A position statement on the Gatwick Airport runway proposals.





High Weald dark sky map



PV panels

4

Providing advice and guidance to our partners on CRoW, Section 85

Advice was provided on 135 national and local policy documents and planning proposals with a potential impact on the High Weald AONB.

- **8 local policy consultations** were responded to including 6 local development framework/local plan reports and site allocations Development Plan Documents (DPDs).
- **65 planning application consultations** from local authorities were received and responded to including significant housing development proposals near Cranbrook, Hawkhurst, Tenterden, Herstmonceaux and Horsham.
- **12 pre-application discussions and consultations** were received including proposals for anaerobic digesters, PV panels and lighting.
- **34 general planning** enquiries about local issues and developments were responded to, with maps, data and sources of further information supplied if needed.
- **3 neighbourhood plans** were engaged with: Nuthurst, Sedlescombe and Ansty and Staplefield; involving liaison with neighbourhood plan teams, providing AONB character data and mapping, as well as commenting on various drafts of the plans.





Rights of way consultations

4

Providing advice and guidance to our partners on CRow, Section 85

Land management scheme consultations



- Responses to **15 non-planning consultations** were responded to including: Natural England's New Environmental Land Management Scheme (NELMS) Strategy; Eastern Rother and Romney Water Catchment Summary; Horsham, Lewes and Mid-Sussex LEADER Strategy; Wealden and Rother LEADER Strategy; National Grid Visual Impact Project; and East Sussex Rights of Way Strategy.

General advice was provided to a further 15 organisations and local partnerships, predominately through partnership or steering group membership.

Ashdown Forest Visitor Management Partnership 1 meeting;

Country Land and Business Association attendance at 3 CLA events – CLA Game Fair, Kent Show and Sussex Countryside awards;

Defra a meeting on the economic contributions of rural areas;

Kent High Weald Partnership steering group 2 meetings;

High Weald Network 4 meetings;

Kent County Council Highways (Tunbridge Wells area) A21 steering group 3 meetings;

Kent Nature Partnership 2 meetings;

Kingscote Valley Tourism Project 2 meetings;

Knepp Castle Wildland Advisory Group 1 meeting;

Leader Partnerships 5 meetings, 3 with the Wealden and Rother Rural Partnership Executive Board and consultants and 1 with the West Sussex Leader strategy team;

Natural England a meeting with Chairman and and Chief Executive and numerous meetings with the Area Manager;

Produced in Kent 2 meetings;

Sussex Local Nature Partnership 1 Executive Board meeting;

Eastern Rother Water Catchment Partnership 3 meetings.





Low voltage transmission line undergrounding project



High voltage transmission line undergrounding project

5

Adding value to our partners' wider landscape and environmental objectives within the High Weald AONB

Support was provided to National Grid and UK Power Networks with:

- **The Visual Impact Provision (VIP) project** which shortlisted a section of high voltage electricity transmission line near Battle Abbey for undergrounding. Activities in support of the VIP Initiative included attending national protected landscape liaison meetings, identifying local stakeholders and promoting and facilitating **a technical consultation event and a public drop-in event.**
- **The UK Power Networks** undergrounding project with activities in support of the initiative including **targeted promotion** of the scheme to identify suitable projects.

Both projects arose from an Ofgem announcement of an allowance for 2015-2021 for the undergrounding of electricity transmission lines in Areas of Outstanding Natural Beauty and National Parks; £6 million in the South East for low voltage power lines and £500 million nationally for high voltage lines.





Walking festivals

5

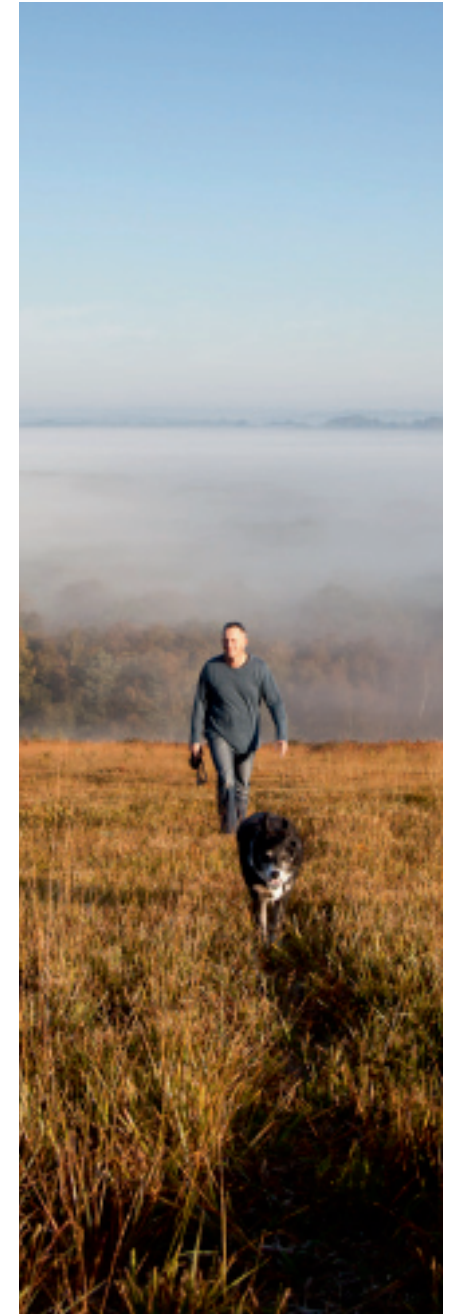
Adding value to our partners' wider landscape and environmental objectives within the High Weald AONB

Farmstead guidance



Support was provided to local authorities with:

- **Walks festivals** The staff team created and developed the Sussex Walks festival website and assisted with the development of the Wealden and Eastbourne Walks Festival and 1066 Country Walks Festival by writing website content, contacting walks leader, advising on walks information and consultation templates and delivering walks.
- **Launch of the Kent farmstead guidance** The staff team organised the event held at Halden Place, Rolvenden. The 95 attendees included local authority officers and members, farmstead owners and planning consultants.
- **Supplementary planning documents (SPD)** including the Ashford Borough Council Equine SPD and providing funds, data and support with the production of the Tunbridge Wells Borough Council (TWBC) SPD on farmsteads.
- **Ancient Woodland Inventory (AWI)** On behalf of Kent districts without a revised inventory a staff member attended the Natural England meeting on rolling out a revision of the AWI for England and now sit on steering group for the project. On request site-specific guidance was supplied to local authorities with an AWI to inform decisions on proposed developments in woodlands.
- **Dark skies data** The staff team identified areas in the High Weald where data exists to support the development of dark sky communities. Local authority specific information was supplied to TWBC to support the development of a Dark Skies SPD.



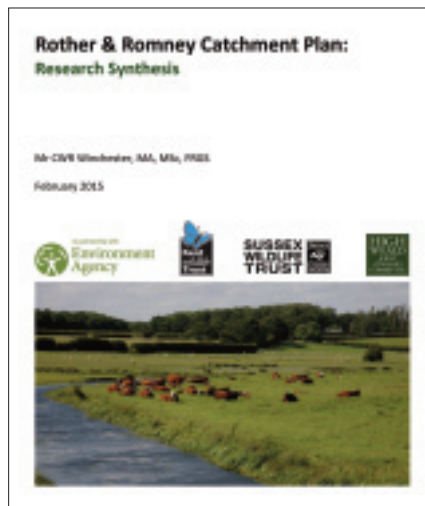


Advising on the ancient woodland inventory

5

Adding value to our partners' wider landscape and environmental objectives within the High Weald AONB

Eastern Rother Research Synthesis

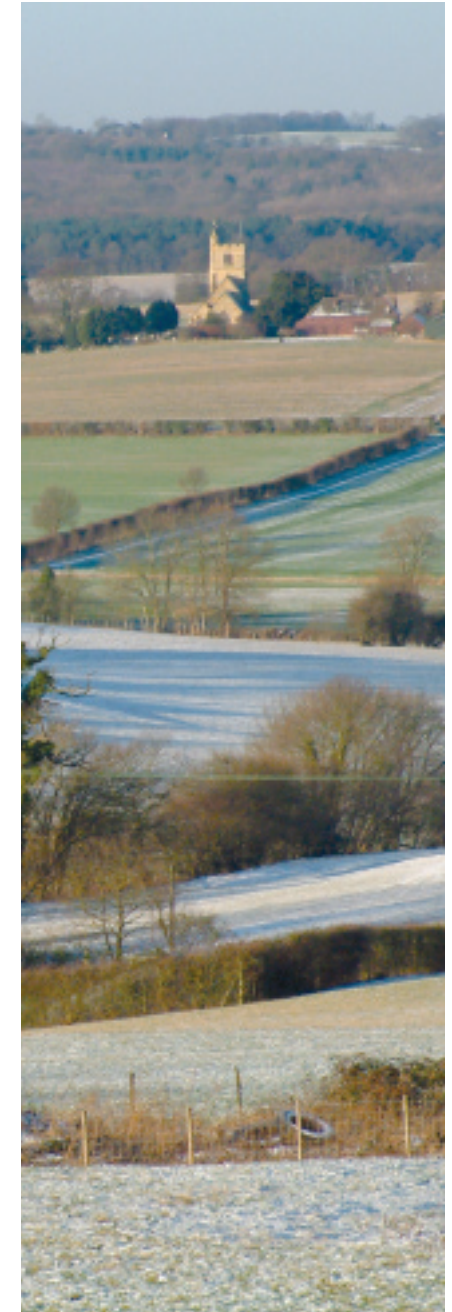


Support was provided to Natural England with:

- Kent High and Low Weald **New Environmental Land Management Scheme (NELMS) targeting** consultations by hosting meetings on behalf of the Kent Nature Partnership and Natural England.
- Responding to planning enquiries by providing **woodland advice** related to the Ancient Woodland Inventory for the Weald and Downs.

Additionally the staff team collaborated with:

- **English Heritage** on the development of a national fieldscapes project, developing a draft methodology for a pilot study.
- **Eastern Rother Water Catchment Partnership** producing a synthesis of the research information available for the area that would be useful in decision-making, project development and educational projects in the area. An invasive species map of the Rother catchment area was produced and online community mapping tools investigated to support the Water Catchment Partnership's work.
- **Woodland Trust** providing office accommodation, administrative support and guidance to the Trust's Low Weald PAWS Officer throughout 14/15.



Financial summary

1 April 2014 to 31 March 2015

The Joint Advisory Committee received its income from Defra, Natural England, local authorities and other bodies as follows:

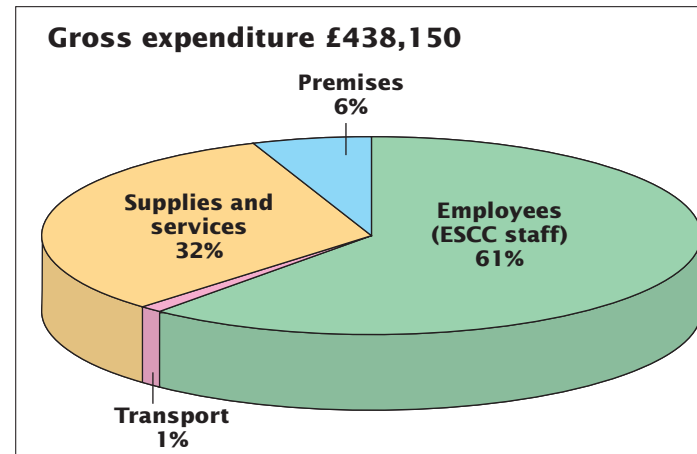
DEFRA and Natural England	£259,390
Local Authority partners	£124,504
Other bodies	£44,722
Heritage Lottery Fund	£16,198

Other bodies included the Environment Agency, English Heritage, Kent Wildlife Trust, Forestry Commission and the Woodland Trust.

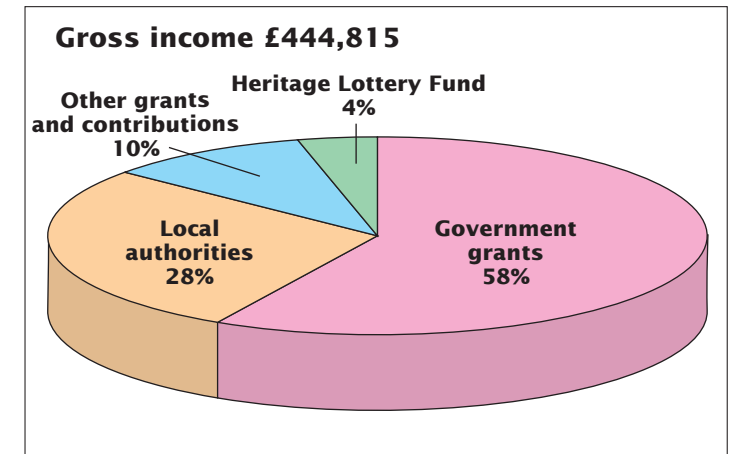
Key

- 1 Weald Meadows Initiative
- 2 Historic Settlements
- 3 Weald and Downs Ancient Woodland Project
- 4 Community Landscape Fund
- 5 Living Woods
- 6 High Weald Heroes
- 7 Brede Habitat Enhancement Project
- 8 Our Land
- 9 Weald Restocking Feasibility Study

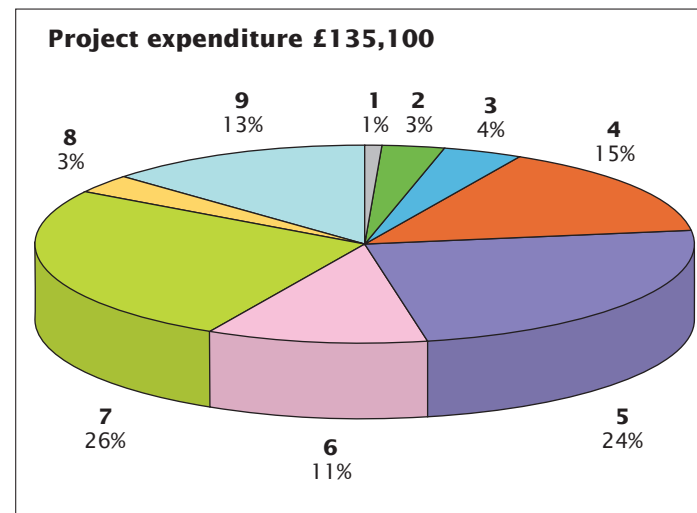
Total expenditure



Total income



Expenditure by project



The final position for the year was a reserve of £104,382 at 31 March 2015, which includes the £6,665 surplus for 2014/15.

High Weald Joint Advisory Committee

Working together to care for one of England's Finest Landscapes

The primary purpose of the JAC is to:

- conserve and enhance the natural beauty of the AONB.

The JAC will also:

- increase understanding and enjoyment by the public of the special qualities of the AONB.
- seek to foster the economic and social well-being of local communities within the AONB.

The High Weald AONB Unit works on behalf of the JAC to achieve these purposes, guided by the High Weald AONB Management Plan and in accordance with the Unit's 3-year business strategy. An Officer's Steering Group (OSG) advises the Management Board and JAC.

Representatives of the JAC, Management Board, OSG and staff team for 2014/15 were as follows:

Joint Advisory Committee and Officers Steering Group

Chair

Councillor B Kentfield

Vice-chair

Councillor Mrs J Davison

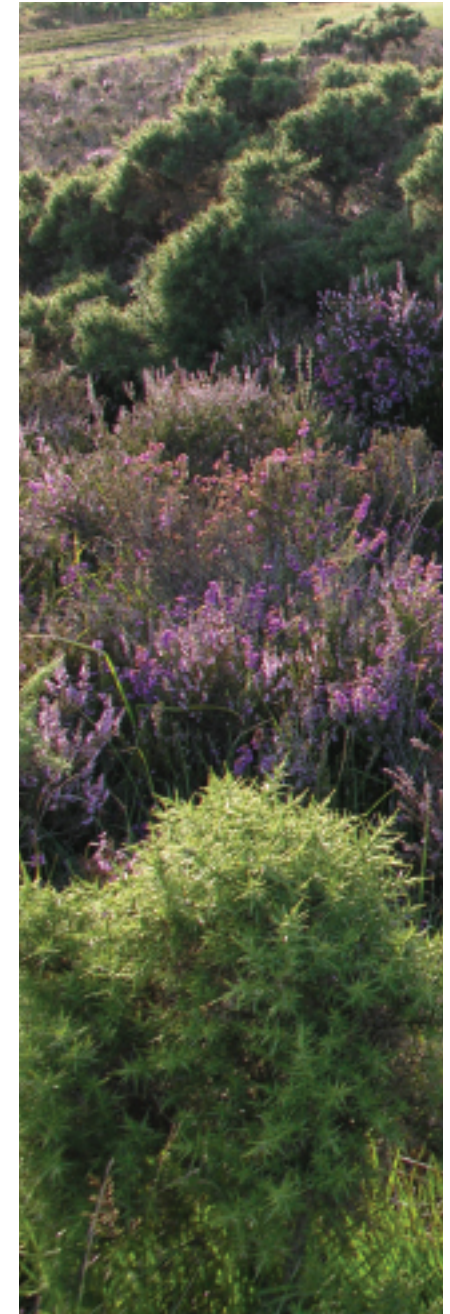
Officers Steering Group Chair

David Marlow

Natural England

Jim Seymour

High Weald
Joint Advisory Committee



East Sussex County Council

Councillor Mrs S Tidy
Virginia Pullan

West Sussex County Council

Councillor B Acraman
Tim Dyer

Kent County Council

Councillor M Balfour
Ruth Childs

Surrey County Council

Councillor M Sydney
David Greenwood

Wealden District Council

Councillor Mrs R Moore
Marina Briginshaw

Rother District Council

Councillor B Kentfield
Tim Hickling
David Marlow

Hastings Borough Council

Councillor Richard Street
Murray Davidson

Mid Sussex District Council

Councillor C Hersey
Jennifer Hollingum

Horsham District Council

Councillor Mrs E Kitchen
Aeron Rees

Crawley Borough Council

Councillor Mr K Blake
Councillor Mr Geraint Thomas (from August 2014)
Tom Nutt

Tunbridge Wells Borough Council

Councillor Mrs J Soyke
David Scully

Sevenoaks District Council

Councillor Mrs J Davison
Helen French

Ashford Borough Council

Councillor R Taylor
Brenda Fazzani

Tonbridge & Malling District Council

Councillor Mrs S Murray
Jenny Knowles

Tandridge District Council

Councillor M Sydney
Councillor Mrs L Dunbar (from July 2014)
Paul Newdick
Sarah Thompson (from January 2015)

JAC Co-optees

Recreation/Leisure

Mrs A Field, Forestry Commission

Community/Economy

Mr J Leggett, Action in Rural Sussex

Landowners

Mr R Edwards, Country Land and Business Association

Farming

Mr W White, National Farmers Union

JAC Management Board

Councillor Mrs S Tidy
Councillor B Kentfield
Councillor Mrs J Davison
Councillor C Hersey
Councillor M Balfour
Councillor B Acraman
Natural England representative

Clerk to the JAC

Samantha Nicholas

Treasurer to the JAC

Mo Hemsley, Acting Treasurer
Marie Nickalls (from March 2015)

High Weald AONB Staff Team

Advising on the management of one of England's Finest Landscapes

The partnership delivered its 14/15 work programme with a staff team averaging 6.2 FTEs.

Core

Co-Directors – Sally Marsh (0.62FTE)/Jason Lavender (0.62FTE)

Business Manager – Gerry Sherwin (0.8FTE)

Policy and Research Officer – Andrew Shaw (full time sickness absence October to March)

Assistant Research Officer – Charles Winchester (0.8FTE)

Administrator – Kerry Baldwin (0.5FTE)

Team Support Officer – Samantha Nicholas (0.8FTE)

Communications Officer – Peter d'Aguilar (0.6FTE) to May 2015

Projects

Cultural Heritage Adviser – Matt Pitts (0.4FTE)

Woodland Adviser – Matt Pitts (0.6FTE)

Education Officer – Janice Cooper (0.6FTE) to June 2014

Education Officer – Rachel Bennington (0.6 FTE) from September 2014

The team participated in a 'Lumina Spark' team training event; 1 social media (Twitter) training event and an induction walk for new staff.

Internal projects implemented by the team included a service review; a refresh of the IT system as part of a wider East Sussex County Council IT refresh programme and the development of the IT system to meet project needs.

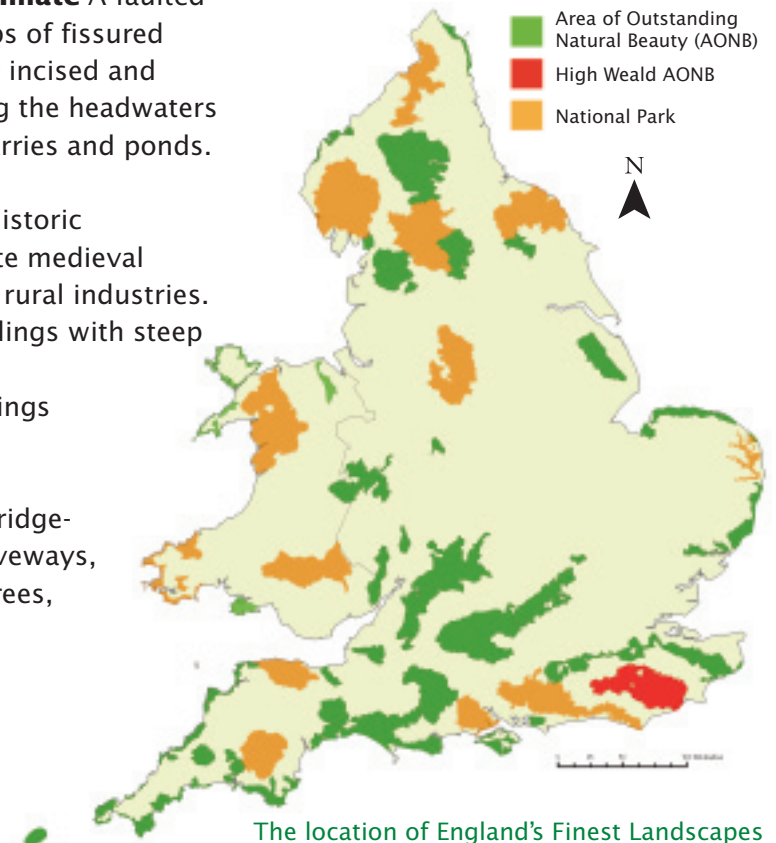




The High Weald Area of Outstanding Natural Beauty

The essential character of the High Weald Area of Outstanding Natural Beauty (AONB) was established by the 14th century and the area is therefore considered to be one of the best surviving, coherent medieval landscapes in Northern Europe. The five key components of its character are:

- **Geology, Landform, Water Systems and Climate** A faulted landform of clays and sandstones with outcrops of fissured sandrock and ridges running east-west, deeply incised and intersected with numerous gill streams forming the headwaters of rivers. A high density of extraction pits, quarries and ponds.
- **Settlement** A very high density of dispersed historic settlements of farmsteads and hamlets with late medieval villages founded on trade and non-agricultural rural industries. A dominance of traditional timber-framed buildings with steep roofs often hipped or half-hipped and an extraordinarily high survival rate of farm buildings dating from the 17th century or earlier.
- **Routeways** Ancient routeways in the form of ridge-top roads and a dense system of radiating droveways, often narrow, deeply sunken and edged with trees, wildflower-rich verges and boundary banks.





The High Weald Area of Outstanding Natural Beauty



- **Woodland** A great extent of interconnected ancient woods, steep-sided gill woodlands, wooded heaths and shaws, generally in small holdings with extensive archaeology and evidence of long term management.
- **Field and Heath** Small, irregularly-shaped and productive fields bounded by hedgerows and small woodlands predominantly of medieval origin and managed historically as a mosaic of small agricultural holdings typically used for livestock grazing. Distinctive zones of heaths and inned river valleys.

These fundamental characteristics of the High Weald AONB are enriched by locally distinctive and nationally important details. These include castles, abbeys, historic parks and gardens, hop gardens and orchards, oast houses and parish churches, veteran trees and local populations of key threatened species.

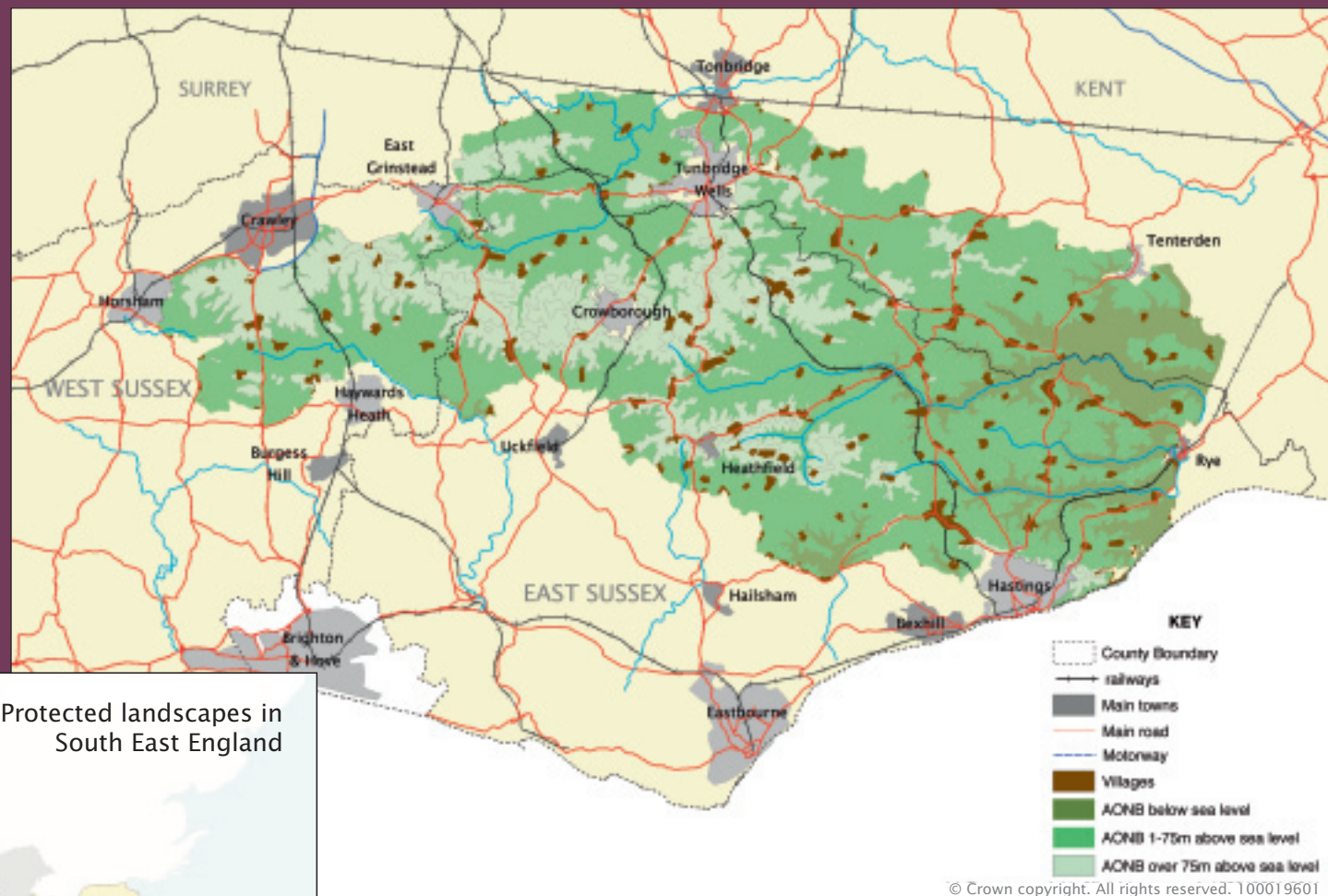
Visit www.highweald.org/learn-about/about-aonbs.html to watch the High Weald Story and learn more about the five components.



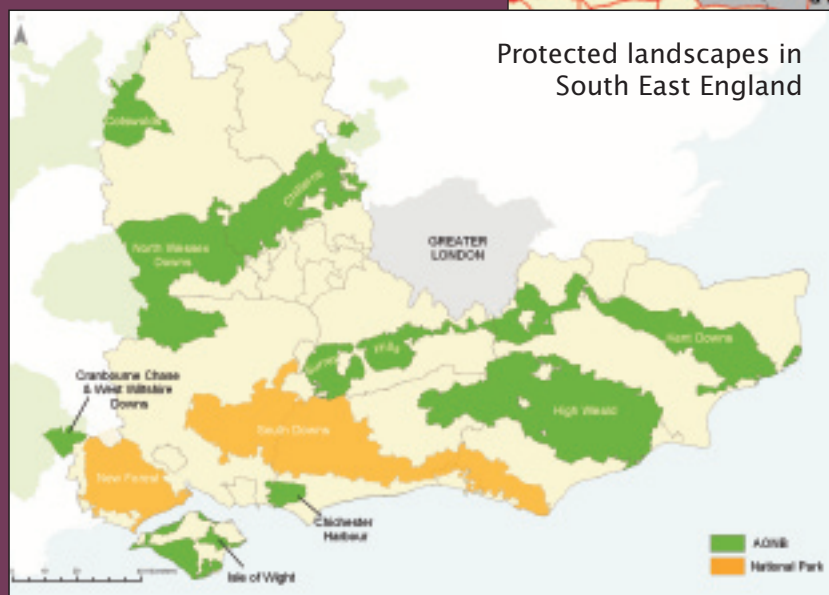
HIGH WEALD JOINT ADVISORY COMMITTEE

Woodland Enterprise Centre
Hastings Road
Flimwell
East Sussex TN5 7PR
T: 01424 723011
E: info@highweald.org
W: www.highweald.org

The annual review is published by the
High Weald AONB Unit on behalf of
the High Weald Joint Advisory
Committee (JAC).



Reproduced from Ordnance Survey Mapping with the permission of the Controller of H.M. Stationery Office. Crown Copyright.
Unauthorised reproduction infringes Crown Copyright and may lead to prosecution or civil proceedings.
East Sussex County Council – 100019601; West Sussex County Council – 100018485; Kent County Council – 100019238; Surrey
County Council – 100019613



Protected landscapes in
South East England

Facts and figures about the High Weald can be found at
www.highweald.org/home/about-aonbs/512-facts-and-figures.html

Published by the High Weald Joint Advisory Committee July 2015
All pictures in the publication © High Weald JAC unless otherwise stated