



## High Weald Joint Advisory Committee Annual Review 2012-2013

*Working together to care  
for one of England's  
Finest Landscapes*



The High Weald Joint Advisory Committee is a partnership between: East Sussex, West Sussex, Kent and Surrey County Councils; Horsham, Mid Sussex, Tandridge, Sevenoaks, Wealden and Rother District Councils; Tunbridge Wells, Hastings, Ashford, Tonbridge and Malling and Crawley Borough Councils; Defra; Natural England; and organisations representing farming, forestry, community, business and recreation interests.

# Contents

---

Foreword	3
<b>1 Co-ordinating action and enabling delivery of the AONB Management Plan</b>	<b>5</b>
<b>2 Championing the High Weald and AONBs</b>	<b>9</b>
<b>3 Preparing, monitoring and reviewing the AONB Management Plan</b>	<b>14</b>
<b>4 Providing advice and guidance to our partners on CRow, Section 85</b>	<b>16</b>
<b>5 Adding value to our partners' wider landscape and environmental objectives within the High Weald AONB</b>	<b>19</b>
Financial summary	20
High Weald Joint Advisory Committee	21
The High Weald Area of Outstanding Natural Beauty	24





Councillor Brian Kentfield,  
Chairman of the High Weald  
Joint Advisory Committee (JAC)



## Foreword

I am delighted to introduce and welcome you to the 2012-2013 annual review for the High Weald AONB Partnership. And although the economic climate hasn't improved the AONB partnership has undertaken a range of value for money projects by working closely with others for the benefit of the High Weald landscape and those who live, work and visit this wonderful place. This review doesn't try to show you everything the AONB partnership has worked on but presents a snapshot of highlights from the year.

In the spring I enjoyed a steam train ride with the Spa Valley Railway as part of the celebration event of the hugely successful Weald Forest Ridge Landscape Partnership Scheme. As we travelled along the line I had time to cast my mind over the twenty different organisations – public, private and voluntary – the Scheme had brought together to work with residents, land owners and visitors to enrich the area's natural and cultural heritage and encourage people to learn and enjoy more about this very special landscape. And although the Scheme came to a close during 2012 after three wonderful years so much of the work undertaken and the relationships created will live on.

The enthusiasm the AONB partnership has for research to increase our collective understanding of the High Weald is something I've long admired. I know from personal experience that the insights the research provides, whether we are farmers or tourists or businesses or local or national policy and decision makers, has helped so many of us to draw important conclusions of direct relevance to the management of the AONB today. For example, local authorities have found the recently completed Weald and Downs Ancient Woodland Survey, a long-standing research project pioneered and popularised by this AONB partnership, valuable for informing planning decisions and providing guidance on woodland management.





---

## Foreword

---

The AONB partnership has also supported a wide range of community projects using Defra's Sustainable Development Fund, which has ensured a number of residents have been able to realise their ideas and develop local solutions to land management issues of interest to them. Given my long-standing interest in education, I was particularly proud we provided funds to meet some of the training costs of a young apprentice starting out in the coppice industry and also for the production of some interpretation boards at a school to promote their community woodland trail.

Of course, the year has been dominated by the statutory review of the High Weald AONB Management Plan, which has provided an exciting opportunity to work with a wide range of individuals and organizations to guidance to be used by all to enable responsible use and management of the AONB. This work will be completed during the next year but I'm keen to stress now how impressed I've been by the enthusiasm I've found in many people in the many organisations involved with this review. It is a credit to all that the AONB seems more valued than ever and the high level of influence the AONB partnership has, puts us in a very good position for the future.

I end by hoping you'll enjoy looking through this annual review and that you take the chance to get involved in the work of the AONB partnership this year and in the years to come.



**Councillor Brian Kentfield**

Chairman of the High Weald Joint Advisory Committee (JAC)  
June 2013





Brenchley Woods interpretation board

Habitat management at Tudely Woods



# 1

## Co-ordinating action and enabling delivery of the AONB Management Plan

**The JAC awarded £10,635 of grant-aid to 16 projects supporting 26 organisations, business and community groups to help achieve AONB Management Plan objectives.**

### **Project highlights included:**

- **Launch of the Rolvenden Heritage Survey report** to the local community supported by a grant of £938. The Heritage Survey, supported by SDF in 2011-12, was developed by Rolvenden Farmers Line to analyse and record settlement form in the Parish of Rolvenden.
- **A geophysical survey** searching for the remains of medieval settlement at Lowden Manor in Rolvenden. The project was carried out by the Rolvenden Farmers Line, Oldakre Associates and Cranleigh University with grant support of £2000.
- **An on-line archaeological Heritage Trail for Brenchley Woods.** The £600 grant to Kent Wildlife Trust allowed a trainee ranger to use the Historic Environment Archaeological Toolkit (produced through another High Weald JAC funded project) to expand their training to encompass a broader understanding of the heritage of the Kent Wildlife Trust nature reserves based in the High Weald.
- Support for the overall **training costs for a greenwood craft apprentice** through a contribution of £350 to the Small Woods Association's 'Work for Woodlands' programme. Jake Whitcroft was placed with John Waller, a greenwood craftsman based at Bore Place.





Community Woodland Trail interpretation

# 1

Co-ordinating action and enabling delivery of the AONB Management Plan

Volunteer equipment



- Support for **training volunteers** to survey the tributaries of the River Uck and to collate GIS information through a £500 grant to the Ouse and Adur River Trust (OART).
- A **volunteer training event** focused on planting a native hedgerow in a traditional fruit orchard through a £750 grant to Standen Fruit Farmers.
- Purchase of **essential equipment and a storage area** to enable the Tudley Woods volunteers to carry out vital habitat management through a £750 grant to the RSPB.
- **Development of a wildlife corridor** through the planting of a native hedgerow, including cob-nut trees. The project developed volunteer and scouts group skills and was achieved through a £1,200 grant to Mrs Hosea, owner of Ashburnham Wood.
- **Installation of a protective fence** to prevent further damage to an ancient gill woodland arising from grazing sheep, achieved through a grant of £750 to Outward Charity. The fencing was part of a wider wetland project to enhance the 11 acre site as part of its development as a respite centre for adults with learning disabilities.
- **Hedgerow planting** of 155 metres along an old boundary line through a £500 grant to Wittersham Oast, a High Weald Our Land business.
- **Enhancement of pasture edges** at a woodland campsite using wildflower plugs and seed through a £300 grant awarded to the Original Hut Co, a High Weald Our Land business.
- Installation of **bat and owl boxes** at a farmstead as part of a habitat management project through a £250 grant to Mr & Mrs Farbrothers of Cranesden Farm, a High Weald Our Land business.
- Production of **5 landscape and wildlife interpretation boards** for the Community Woodland Trail at Cuckfield's Holy Trinity Primary School, supported by a grant of £1000.
- Development of Lamberhurst's St Mary's Primary School's living classroom area including purchase and installation of a locally produced, **wooden story telling chair**, supported by a grant of £300.
- Production of **coppice illustrations** to help High Weald Hero primary schools educate children on the importance of woodland management.







Welly Walks continued to be popular

# 1

Co-ordinating action and enabling delivery of the AONB Management Plan

Re-creating the noise of the iron industry

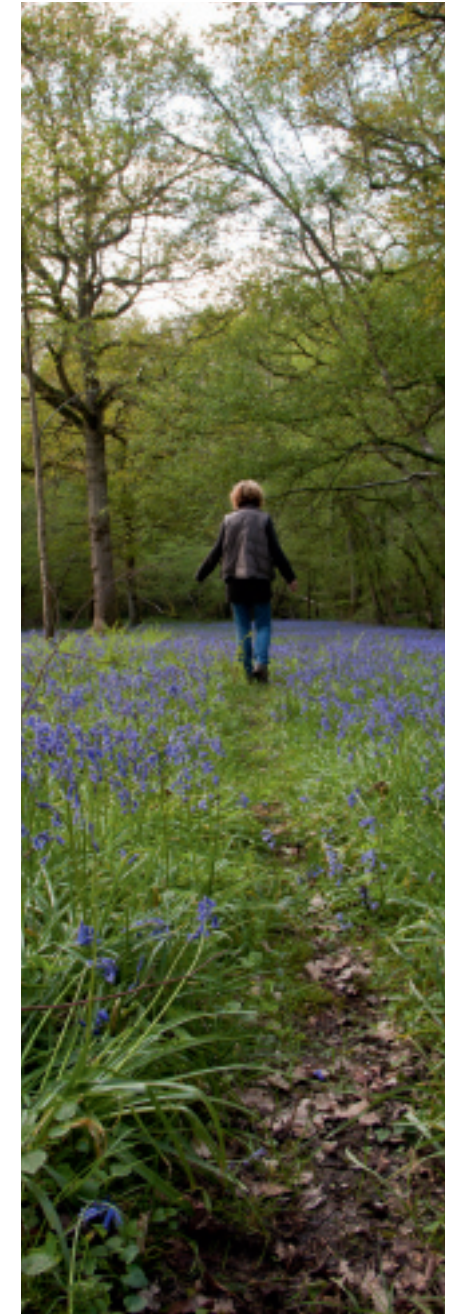


**80 primary schools participated in High Weald Heroes, the JAC's school education programme which ran until July 2012 with 45 events involving over 4,600 pupil sessions.**

## Project highlights included:

- A further **4 High Weald Hero schools recruited**, bringing the total number of High Weald Heroes schools to 80.
- Production of **4 'Welly Walks'** bringing the total number of school Welly Walks to 50.
- **Continuation of High Weald Creative Workshop Programme** with: 4 Songs and Sounds; 5 Creative Art; and 4 Drama workshops; and associated whole school assemblies, involving 1470 children.
- Deliver of **4 introductory High Weald assemblies** and **10 High Weald themed workshops**.
- **2,000 children** visiting the High Weald stand at the South of England Agricultural Society's **Connect with the Countryside event** to make origami pigs, handle artefacts and put together map jigsaws.
- Supporting the delivery of a **School Energy Day** involving 8 schools and 240 pupils at Bedgebury Forest.
- **3 teacher training sessions** focusing on promoting outdoor learning opportunities across the AONB.
- Hosting of a primary school **exchange visit from France** focused on 'Exploring and Enjoying local Woodlands'.
- Support with the development and testing of a **Primary School Archaeological Toolkit**.
- An **extremely positive evaluation report**, following consultation with teachers, to support the final project report to the Heritage Lottery Fund.

**The Living Woods Project; a 3-year project to engage landowners and communities with their woodlands started following grant offers from the Heritage Lottery Fund and the Woodland Trust.**





'Identifying fungi' event

# 1

Co-ordinating action and enabling delivery of the AONB Management Plan

Students interviewing woodland workers



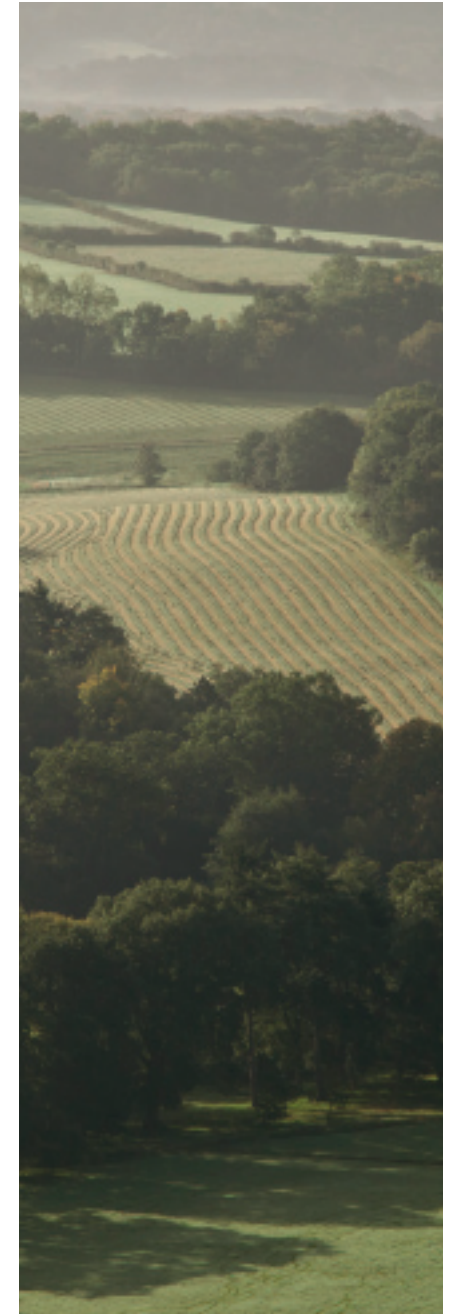
Living Woods Project highlights included:

- 21 woodland advisory visits with follow on advisory reports/packs for woodland owners.
- Community archaeology surveys at 2 sites; the National Trust's Standen property and Ashplatts Wood, a community woodland near East Grinstead.
- 3 woodland management workshops focused on ancient woodland restoration (1) and deer management (2).
- 2 survey training events, one focused on Bryophytes and the other on Lichens.
- A talk on the Ashdown Forest Pale attended by 150 people.
- Project promotion at Weald Woodfair.
- A woodland careers project which enabled groups of students from three secondary schools to interview and film woodland workers; develop creative presentations on working in the sector; and present their work to fellow students and an expert panel.

**Additionally the Unit worked with 2 secondary schools and 2 further education establishments.**

- Eugenie van Heijgen, a Dutch student, undertook a 4-month, full time, work placement as part of her double Masters degree studies at Wageningen University and University of Groningen.
- Will Moody, a Year 10 student from Cranbrook Grammar School, undertook a week's work placement in July 2012.
- Humzah Chowdhury, a Year 10 student from Robertsbridge Community College, undertook a week's work placement in March 2013.
- Michael Satchwell, a Year 2 student from Hadlow Agricultural College studying Countryside Management, undertook a 3-month's work placement.

**Through other projects 13 landowners received cultural heritage site visits with follow on advisory reports/packs and 17 meadow owners received advice through a project to evaluate SSSI grassland status.**







Ash Dieback

## 2 Championing the High Weald and AONBs

---

**The needs of the High Weald AONB and AONBs were promoted nationally and regionally working with the National Association for AONBs, South East Regional AONB Co-ordinator, the South East region AONB chairs and leaders.**

Key activities included:

- Meetings (2) with **Greg Barker MP, High Weald Patron** and Government Minister to discuss AONB issues.
- **Ash Dieback liaison meetings** with the Forestry Commission and South East AONBs.
- Collaboration with English Heritage on the production of guidance for the analysis of **Historical Settlement Form, Character, and Built Design by Parish Communities**.
- **Meetings** (2) Director General of the NFU England and Wales and CLA Regional Director and Regional Surveyor (South East).
- Collaboration with Birmingham City University on a national research project to develop and **Ecosystem Approaches Toolkit** for management planning.
- Submission of **a report to IUCN to support AONB Category V designation**.
- Contribution to the **NAAONB working group on AONB Monitoring**.
- Attendance of the **NAAONB's annual conference** in York.
- Sponsorship of the **Kent Food and Farming Landscape Award** working jointly with the Kent Downs AONB JAC.

NAAONB annual conference,  
field trip





High Weald Our Land blog

## 2

### Championing the High Weald and AONBs

Landscape walks



### The protected landscape's sustainable tourism project "Our Land" went from strength to strength.

Highlights included:

- Recruitment of a further **54 High Weald businesses** to the Project through partnership working with local tourism consultancy, Acorn Tourism and local online travel agency, Responsible Travel bringing the total number of High Weald Our Land products to 85.
- Delivery of a **High Weald Video workshop** to help accommodation providers produce low cost videos that promote their property and its landscape setting, attended by 6 people.
- Delivery of a **Historic Farmstead workshop** to help accommodation providers understand their heritage value, attended by 21 people.
- Distribution of **High Weald Welcome Packs** to new Our Land businesses.
- Project promotion at the Visit Sussex attractions and leaflet fair.
- Production of 15 web pages on **www.highweald.org** promoting High Weald Our Land businesses.
- Publication of **6 Our Land blogs** to promote things to do in the area during the Winter months.
- A **team building day for Responsible Travel** staff in partnership with the RSPB at Broadwater Forest.

### 18 High Weald AONB presentations, tours and guided walks were undertaken.

Audiences included:

Natural England Catchment Sensitive Farming Officers; Environment Agency (Southern Region) Fisheries, Recreation and Biodiversity Officers; Environment Agency (Southern Region) Water Framework Directive Co-ordinators; Students and tutors from the Durrell Institute of Conservation and Ecology at Canterbury University (3), an international gathering of farmers working for Ingelby Farms (4); Responsible Travel (2); Hassocks Horticultural Society; Sussex and Surrey Coppice Group; Iden Green Community Group; Brede Wildlife Group; Customers of The Bell, Ticehurst (2).







New site interpretation material  
focus of Enews

## 2

### Championing the High Weald and AONBs

WWII evacuee video



#### 18 promotional items were produced and distributed.

- **15 Enews** – with a particular focus on lesser know events being held across the High Weald; new interpretation material published/erected on countryside sites across the area and Living Woods.
- A new High Weald **historical character video – Dora, WWII evacuee.**
- **Articles** within Woodfair; Insight and Ashdown Forest Living magazines.
- **A Living Woods project flier.**
- Termly **education newsletters** to 80 primary schools.
- **5180 copies of “I-Spy High Weald” and 4100 copies of “Historic Happenings in the High Weald – From Stone Age to Space Age”** were distributed to 80 schools in the area.
- A downloadable **JAC Annual Review 2011-2012** promoted to 870 people.

**24 media articles** referring to the High Weald AONB were picked up by the Unit’s press cutting service: 14 focused on the area’s conservation and enhancement and 10 on the area’s role in furthering public understanding and enjoyment.

**www.highweald.org was maintained and developed receiving 41,000 visits from 29,000 visitors with an average time on site of 3 minutes.**

Developments included:

- Publication/amendment of 160 pages including **32 news articles.**
- Revamp of visitor information for the countryside sites in the Weald Forest Ridge.
- Creation of a visitor activities section to promote Our Land activity providers, with 12 activities added to the interactive map.
- Publication of 2 new artist interviews highlighting the landscape as an inspirational source.







Enjoy and Explore the Weald Forest Ridge leaflet

## 2

Championing the High Weald and AONBs

Project evaluation workshop



© Richard Clarke, CEPAR

The most popular section was the Out and About section and the top pages were: walking and cycling; High Weald boundary; interactive map; publications section; about us; and the events calendar. The High Weald's Your Tube channel received 4325 views with the most popular videos: Archaeology of Ashdown Forest (613 views); Creating Wildflower Meadows – whole crop method (502); Thatching a Mesolithic House (481).

### **The Weald Forest Ridge Landscape Partnership Scheme was successfully completed.**

Key activities were:

- A **Partnership workshop** bringing together individuals involved in the Scheme to review joint working and project delivery experiences.
- Production of a Scheme **Evaluation Report** and a **Monitoring Report**.
- Production of the **“Enjoy and Explore” legacy leaflet**.
- **Doorstep delivery of “Enjoy and Explore to 130,000 households** in the Weald Forest area and its neighbouring 8 towns and distribution to TICs, visitor Centres and accommodation providers.

### **The Battle and Brede Landscape Partnership Scheme was developed with financial support from Natural England.**

Key activities were:

- A **tour and presentation** of the Scheme for Heritage Lottery Fund assessors.
- A **community consultation** through online questionnaires, 2 workshops, 3 drop-in sessions and 27 telephone interviews or site meetings.
- A **Partnership Forum** bringing everyone together to develop the Scheme's vision and projects.





Skills training a focus of fundraising

## 2

### Championing the High Weald and AONBs

Education a focus of fundraising



#### 4 funding bids were submitted to support the JAC's work.

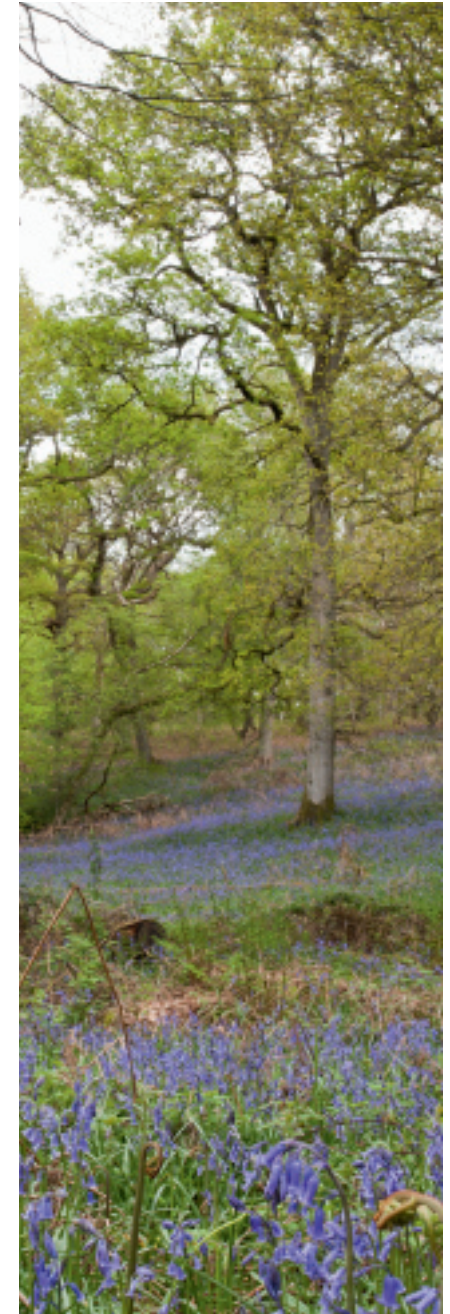
Bids were made to:

- **Defra** for their 2013-2014 contribution to the JAC's work.
- **Wealden District Council** for contributions to the JAC's work through a 2013-2016 Service Level Agreement.
- **The Heritage Lottery Fund's Skills for the Future Programme** to develop a woodland apprentice scheme.
- **The Heritage Lottery Fund's Your Heritage Programme** for the JAC's primary school education work.

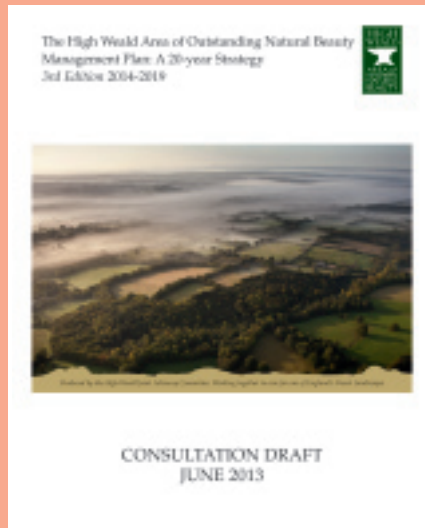
#### 2 JAC meetings, 3 JAC Management Board meetings, 3 OSG meetings and 2 Sustainable Development Fund panel meetings were held.

Key outcomes were:

- Sign-off of the Consultation Draft of the High Weald AONB Management Plan 2014-2019 and supporting documents.
- Agreement to **savings of £17,500** to balance the JAC's 2013-14 budget.







Consultation Draft of the AONB Management Plan

Metal-framed farm building



# 3

## Preparing, monitoring and reviewing the AONB Management Plan

---

### The Review of the AONB Management Plan 2009-2014 continued.

- Following technical review a **Consultation Draft of the High Weald AONB Management Plan 2014-2019** was produced and signed off for public consultation by the JAC.
- In accordance with European regulations (2001/42EC), consultation drafts of 2 reports which identify the likely environmental impacts that may arise from the implementation of the new Plan – namely the **Appropriate Assessment** (AA) and the **Strategic Environmental Assessment** (SEA) were produced.
- A project to update the socio-economic and environmental profile of the AONB to support the AONB Management Plan was started.

**9 reports were produced to provide an evidence base for the AONB Management Plan and to support the Unit's comment on planning proposals.**

The reports were:

- **A Performance Monitoring Report** which scores the implementation and effectiveness of the High Weald 2009-2014 Management Plan's policies.







### 3

Preparing, monitoring and reviewing the AONB Management Plan



- **A Condition Monitoring Report** which measures and assesses changes in and risks to the state and quality of the landscape and its features since the High Weald 2009-2014 Management Plan was produced.
- **Eco-camping in the High Weald AONB:** *a review of the potential environmental impacts and recommendations for future development.*
- **A Summary of High Weald AONB Ancient Woodland Data** and further information on key woodland features.
- **High Weald Grassland SNCI Landowner Liaison Project:** *a review of current biodiversity status, management regimes and management issues for High Weald unimproved grassland sites with SNCI/LWS status.*
- **Tourism in the High Weald Area of Outstanding Natural Beauty:** *trends, issues and opportunities.*
- **Metal Farm Buildings in the High Weald:** *their history and contribution to landscape character.*
- **Revision of the Historic Landscape Character Assessment (HLC) for Hawkhurst parish:** *progress towards delivering a consistent HLC for the High Weald AONB.*





Landscape character advice

Interpretation advice



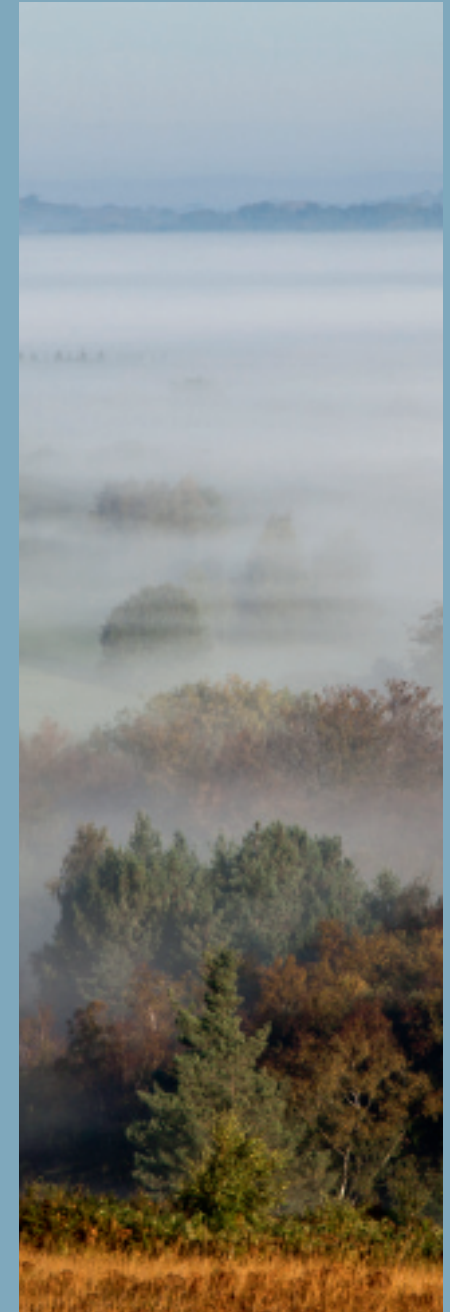
# 4

## Providing advice and guidance to our partners on CRoW, Section 85

---

**Advice was provided to the officers within the area's 15 local authorities and a further 35 organisations and local partnerships.**

Adur and Ouse Stakeholders' Liaison Group; Ashdown Forest Visitor Management Partnership; Conservators of Ashdown Forest; Country Landowners and Business Association; Environment Agency; English Heritage; Future of Farming Review Group; Farming and Rural Issues Group for the South East; Forestry Commission; Game and Wildlife Conservation Trust; Hadlow Agricultural College – Industry Liaison Pane; High Weald Landscape Trust; High Weald Network; Knepp Castle Wildland Advisory Group; Kent Local Nature Partnership; Kent Landscape Group; Kent High Weald Partnership; Kent Wildlife Trust; Plumpton College; Natural England; National Trust; National Farmers Union; Ouse and Adur River Trust; Royal Botanical Gardens Kew at Wakehurst; Small Woods Association; South East and East Protected Landscapes Group; South East and East Protected Landscapes Planning Group; South East Water; South East Woodlands Forum; South East Woodlands Archaeology Forum; Sussex Local Nature Partnership; Sussex Geodiversity Group; Sussex Wildlife Trust; Wadhurst Park Estate; WARR Partnership; Woodland Trust.







New development proposals

## 4

Providing advice and guidance to our partners on CRoW, Section 85



### **Advice was provided on 72 planning applications, 9 Local Development Frameworks (Plans) and local policy documents and national policy consultations.**

Significant planning issues for which advice was provided, were:

- Proposals for a development of a rural exception site, 6 affordable houses at Forge Field, Penshurst. The landscape impacts were significant and the Unit was closely involved with the landscape architects and the Council in assessing the impacts.
- A proposal for a new access driveway across open fields at Hammingden where the impacts would have had significant impacts on the historic fields. The proposal was refused at appeal.
- Eco-camping proposal. A number of eco-camping proposals were received, including Wild Boar Wood and Ashburnham, both raising issues of the impacts on woodland and special features. Further research on the impacts of eco-camping was commissioned as a result.
- A major housing site allocation at Heathfield was deleted from the Wealden Local Plan following the Units representations at the public inquiry. Further work with the Council, the Heathfield Town Partnership and the Unit took place including attending the developer's public meeting. The Council is undertaking additional work to fulfil the major development test requirements in relation to this site.
- Housing proposals at Harwoods Lane Farm; James Avenue, Herstmonceux; Penn's Yard, Pembury; Buchan Hill reservoir and Mannings Heath raised issues of development on the boundary of the AONB where there is significant housing pressure and a risk to the integrity of the AONB boundary. Two of these have been refused.
- A major application for 120 houses at Fowlers Park to the east of Hawkhurst raising a number of landscape impacts.
- ESCC Rights of Way (RoW) diversion criteria and protocol for responding to RoW diversion requests.





# 4

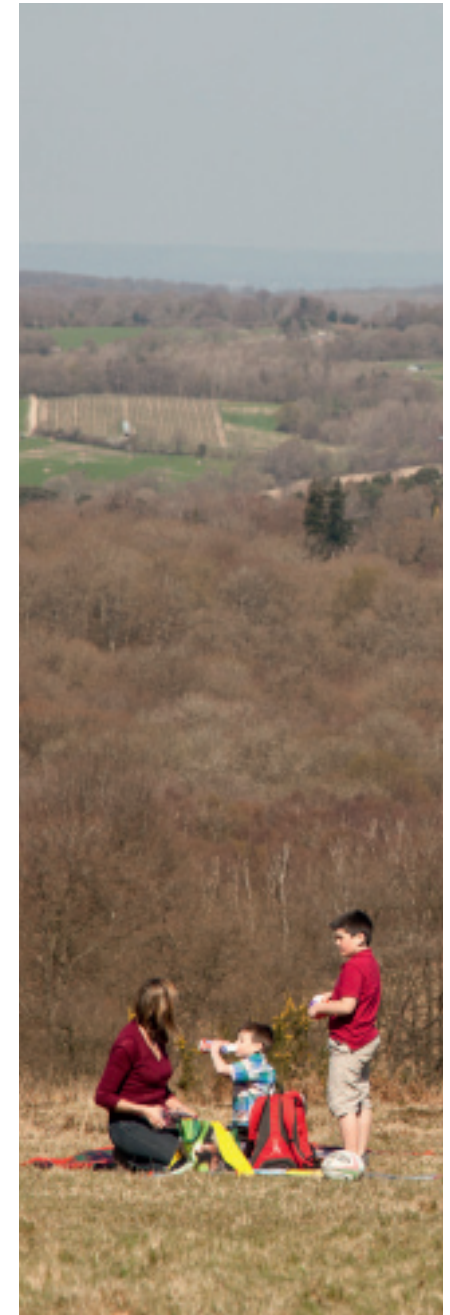
Providing advice and guidance to our partners on CRoW, Section 85

**A key area of work was advising and commenting on Neighbourhood Plan proposals and preparation, including attending RTPI led localism and neighbourhood planning events.**

Key activities were:

- Liaison and consultation with Ardingly Parish Council regarding preparation of the Neighbourhood Plan; providing of settlement character assessment report and attending meetings and consultation events.
- Liaison and consultation with Slaugham Parish Council regarding preparation of the Neighbourhood Plan, providing settlement assessment and data, attending meetings and consultation events and responding to draft plan consultation.
- Liaison and consultation with West Hoathly Parish Council regarding preparation of the Neighbourhood Plan, providing settlement assessment and data, attending meetings and responding to draft plan consultation.
- Liaison and consultation with Balcombe Parish Council regarding their neighbourhood plan.

Neighbourhood plan locations





© Crown copyright. All rights reserved. 100019601, (2012)

Character component data

# 5

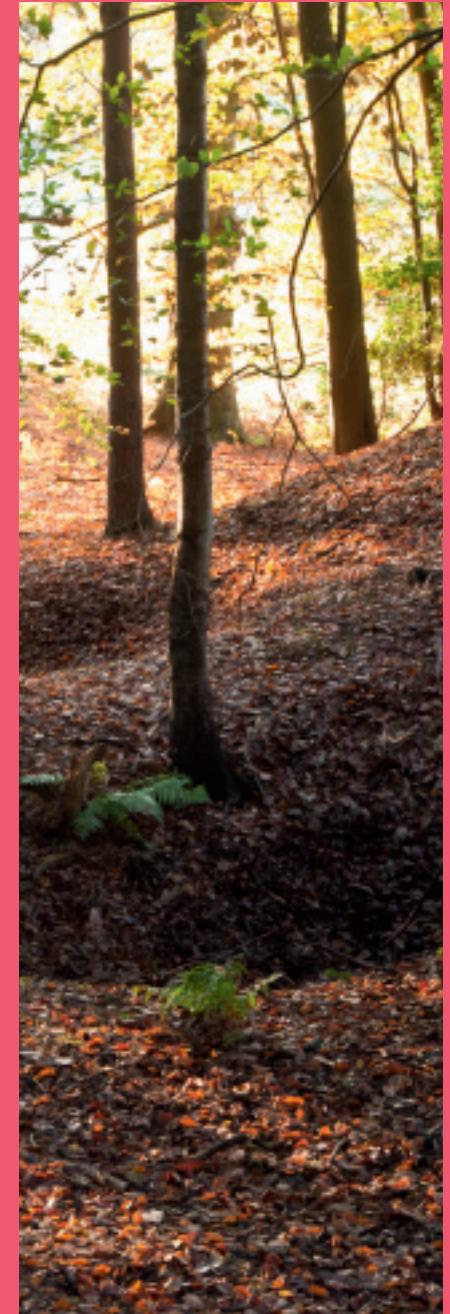
## Adding value to our partners' wider landscape and environmental objectives

**The JAC's GIS system was developed to meet requests for AONB district and parish data and AONB character component datasets were developed or expanded, in particular:**

- The analysis of Historic Landscape Character (English Heritage) data to develop a medieval character layer (including place names) to inform the Management Plan review.
- Interpretation of Historic Landscape Character data to enable the identification of commons and greens.
- Development of social and economic statistic layers to inform the Management Plan review.
- AONB component data provided to three parishes for neighbourhood plans (Slaugham, Ardingly, West Hoathly).
- AONB component data supplied to Rother DC and Wealden DC, for planning policy development work.
- Landscape character data for the Kent Downs AONB.
- Data to the Woodland Trust for the Maidstone Woodland Inventory.
- Support to Tunbridge Wells BC for developing their character map study.

**The Weald Ancient Woodland Inventory Project ended; with inventory updates for 3 districts in Kent (Sevenoaks, Canterbury and Maidstone) completed, overseen by the JAC.**

- Summary reports were produced for Sevenoaks, Canterbury and Maidstone districts.
- Final ancient woodland inventory layers for all 15 districts in the High Weald were uploaded onto MAGIC (government website) by Natural England in March 2013.



# Financial summary

The Joint Advisory Committee received its income from Defra, Natural England, local authorities and other bodies as follows:

DEFRA and Natural England	
	£334,500
Heritage Lottery Fund	£101,300
Local Authority partners	£142,500
Other bodies	£27,000

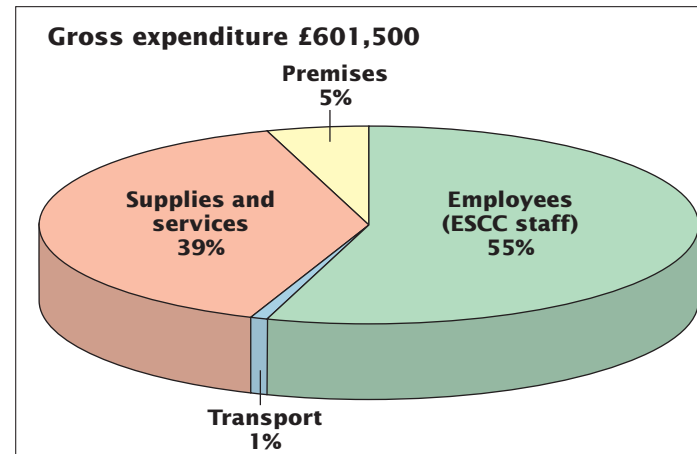
Other bodies included Environment Agency, English Heritage, Conservators of Ashdown Forest, Forestry Commission, the Woodland Trust and local schools.

## Key

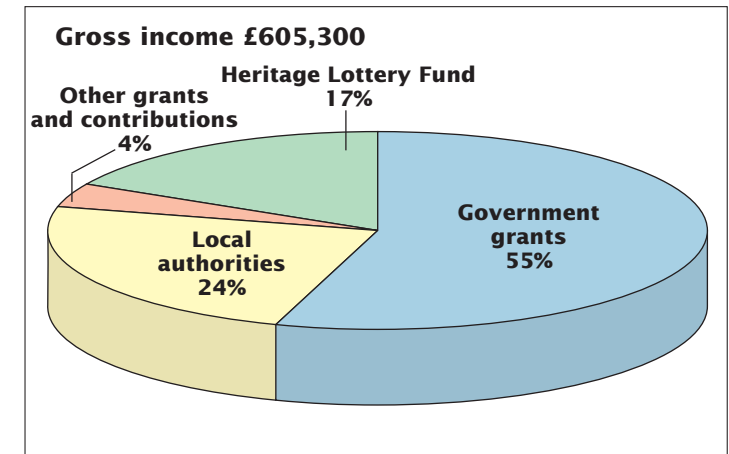
- 1 Ashdown Forest Interpretation Project
- 2 South East Protected Landscapes Activity
- 3 Historic Settlement Project
- 4 Multi-functional Forests Project
- 5 Management Plan Research
- 6 Weald Meadows Initiative
- 7 Our Land
- 8 High Weald Heroes
- 9 Battle & Brede Landscape Partnership Scheme
- 10 Sustainable Development Fund
- 11 Wealden Ancient Woodland Inventory Project
- 12 Living Woods
- 13 Weald Forest Ridge Landscape Partnership Scheme

**1 April 2012 to 31 March 2013**

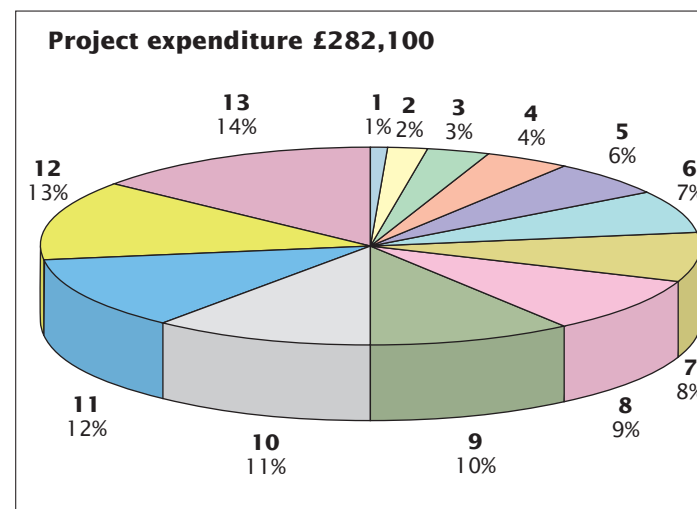
## Total expenditure



## Total income



## Expenditure by project



The final position for the year was a reserve of £89,233 at 31 March 2013, which includes the £3,819 surplus for 2012/13.



# High Weald Joint Advisory Committee

---

*Working together to care for one of England's Finest Landscapes*

The primary purpose of the JAC is to:

- conserve and enhance the natural beauty of the AONB.

The JAC will also:

- increase understanding and enjoyment by the public of the special qualities of the AONB
- seek to foster the economic and social well-being of local communities within the AONB.

The High Weald AONB Unit works on behalf of the JAC to achieve these purposes, guided by the High Weald AONB Management Plan and in accordance with the Unit's 3-year business strategy. An Officer's Steering Group (OSG) advises the Management Board and JAC.

Representatives of the JAC, Management Board, OSG and staff team for 2012/13 were as follows:

## **Joint Advisory Committee and Officers Steering Group**

### **Chair**

Councillor B Kentfield

### **Vice-chair**

Councillor C Hersey

### **Officers Steering Group Chair**

Paul Newdick (until May 2012) David Marlow

### **Natural England**

Fran Davies (until March 2013) Nicola Davies

---

High Weald  
Joint Advisory Committee

---



**East Sussex County Council**

Councillor Mrs S Tidy  
Virginia Pullan

**West Sussex County Council**

Councillor K Blake  
Jackie Lewis

**Kent County Council**

Councillor R Bullock  
Kate Phillips; Elizabeth Milne (until February 2013)  
Ruth Childs

**Surrey County Council**

Councillor M Sydney  
David Greenwood

**Wealden District Council**

Councillor Mrs R Moore  
David Phillips

**Rother District Council**

Councillor B Kentfield  
Tim Hickling; David Marlow

**Hastings Borough Council**

Councillor M Lock (until Autumn 2012)  
Councillor R Street  
Murray Davidson

**Mid Sussex District Council**

Councillor C Hersey  
Alma Howell

**Horsham District Council**

Councillor Mrs E Kitchen  
Emma Parnaby

**Crawley Borough Council**

Councillor Mrs S Blake  
Tom Nutt

**Tunbridge Wells Borough Council**

Councillor Mrs J Soyke (from Summer 2012)  
David Scully

**Sevenoaks District Council**

Councillor Mrs J Davison  
Sarah Lloyd (until Summer 2012) Helen French

**Ashford Borough Council**

Councillor R Taylor  
Brenda Fazzani

**Tonbridge & Malling District Council**

Councillor M Balfour  
Jenny Knowles

**Tandridge District Council**

Councillor M Sydney  
Paul Newdick

**JAC Co-optees**

**Recreation/Leisure**

Mr A Betts (until Summer 2012),  
Mrs A Field: Forestry Commission

**Community/Economy**

Mr J Leggett, Action in Rural Sussex

**Landowners**

Mr T Broomhead (until Summer 2012),  
Mr R Edwards: Country Land and Business Association

**Farming**

Mr R Froggatt, National Farmers Union

**JAC Management Board**

Councillor Mrs S Tidy  
Councillor B Kentfield  
Councillor Ms J Davison  
Councillor Mrs E Kitchen  
Councillor M Balfour  
Natural England representatives

**Clerk to the JAC and Board**

Simon Bailey

**Treasurer to the JAC**

Mo Hemsley



## High Weald AONB Unit Staff

---

*Advising on the management of one of England's Finest Landscapes*

### Core

**Co-Directors** – Sally Marsh (0.62FTE)/Jason Lavender (0.62FTE)

**Business Manager** – Gerry Sherwin (0.8FTE)

**Policy and Research Officer** – Andrew Shaw

**Research Officer** – Ruth Childs (until November 2012)

**Administrator** – Kerry Baldwin (0.5FTE)

**Team Support Officer** – Samantha Nicholas (0.8FTE)

### Projects

**Weald Forest Ridge Manager** – Simon Aguss

**Weald Forest Ridge Administrator** – Patricia Tiltman  
(0.8FTE until November 2012)

**Cultural Heritage Adviser** – Matt Pitts (0.4FTE)

**Woodland Adviser** – Matt Pitts (0.6FTE)

**Education Officer** – Laura Sweeting (until July 2012)

**GIS and Habitat Mapping Officer** – Philip Sansum  
(part time until September 2012)

---

High Weald  
Joint Advisory Committee

---

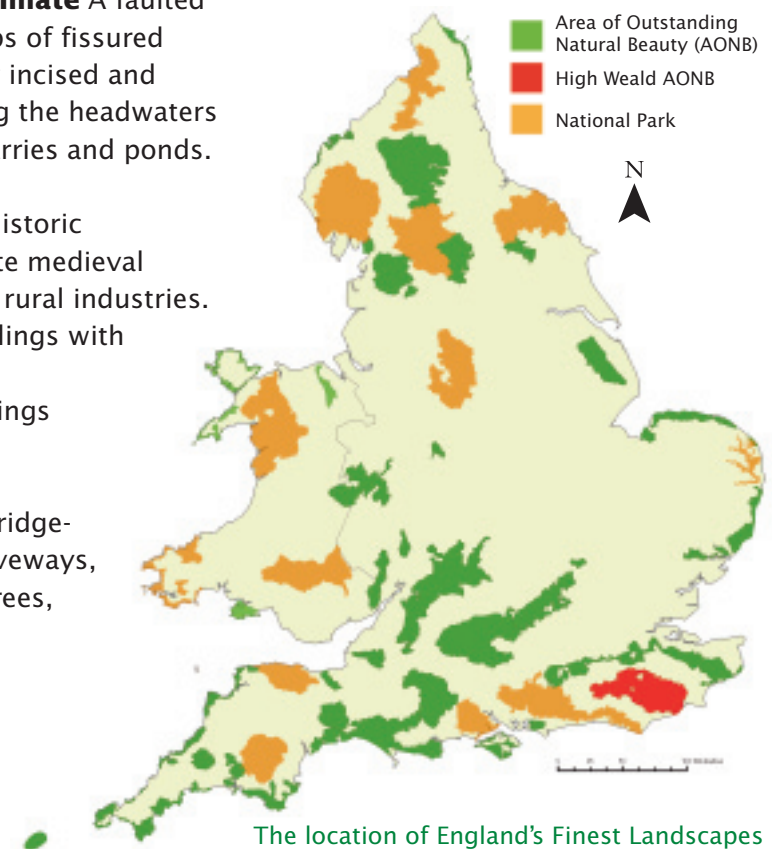




# The High Weald Area of Outstanding Natural Beauty

The essential character of the High Weald Area of Outstanding Natural Beauty (AONB) was established by the 14th century and the area is therefore considered to be one of the best surviving, coherent medieval landscapes in Northern Europe. The five key components of its character are:

- **Geology, Landform, Water Systems and Climate** A faulted landform of clays and sandstones with outcrops of fissured sandrock and ridges running east-west, deeply incised and intersected with numerous gill streams forming the headwaters of rivers. A high density of extraction pits, quarries and ponds.
- **Settlement** A very high density of dispersed historic settlements of farmsteads and hamlets with late medieval villages founded on trade and non-agricultural rural industries. A dominance of traditional timber-framed buildings with steep roofs often hipped or half-hipped and an extraordinarily high survival rate of farm buildings dating from the 17th century or earlier.
- **Routeways** Ancient routeways in the form of ridge-top roads and a dense system of radiating droveways, often narrow, deeply sunken and edged with trees, wildflower-rich verges and boundary banks.






---

## The High Weald Area of Outstanding Natural Beauty

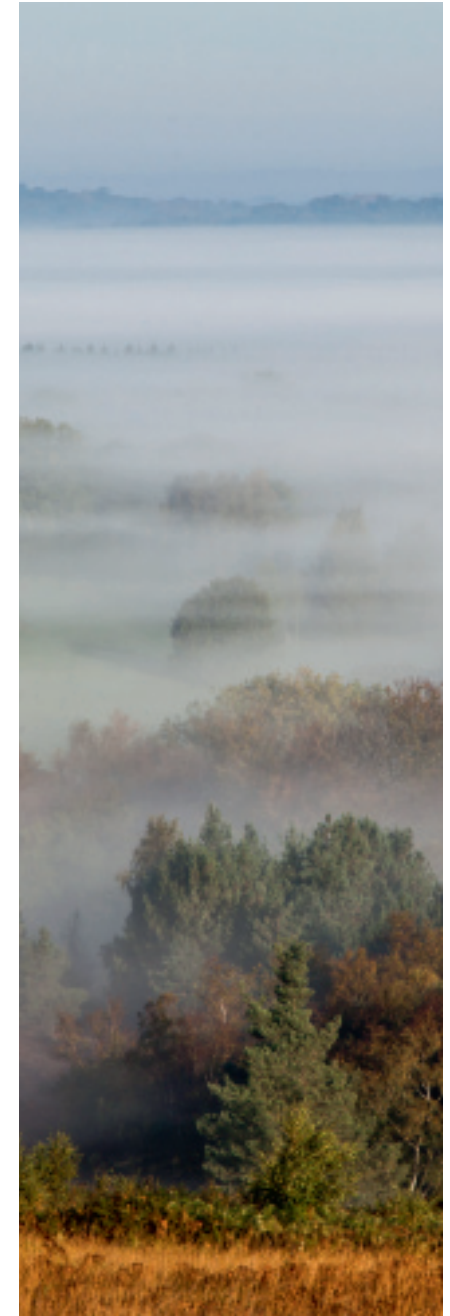
---



- **Woodland** A great extent of interconnected ancient woods, steep-sided gill woodlands, wooded heaths and shaws, generally in small holdings with extensive archaeology and evidence of long term management.
- **Field and Heath** Small, irregularly-shaped and productive fields bounded by hedgerows and small woodlands predominantly of medieval origin and managed historically as a mosaic of small agricultural holdings typically used for livestock grazing. Distinctive zones of heaths and inned river valleys.

These fundamental characteristics of the High Weald AONB are enriched by locally distinctive and nationally important details. These include castles, abbeys, historic parks and gardens, hop gardens and orchards, oast houses and parish churches, veteran trees and local populations of key threatened species.

Visit **[www.highweald.org/learn/about-the-high-weald.html](http://www.highweald.org/learn/about-the-high-weald.html)** to watch the High Weald Story and learn more about the five components.



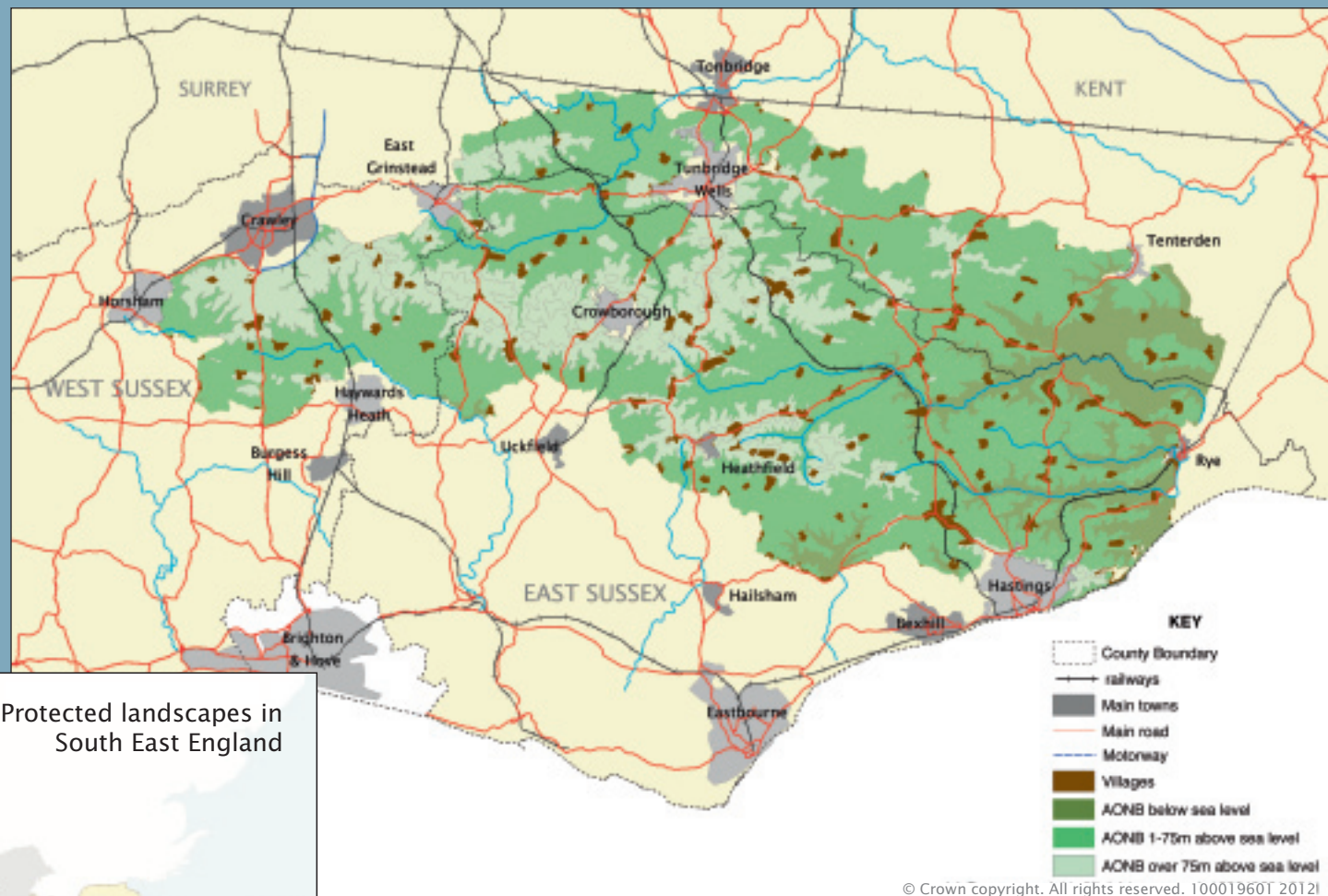


# HIGH WEALD JOINT ADVISORY COMMITTEE

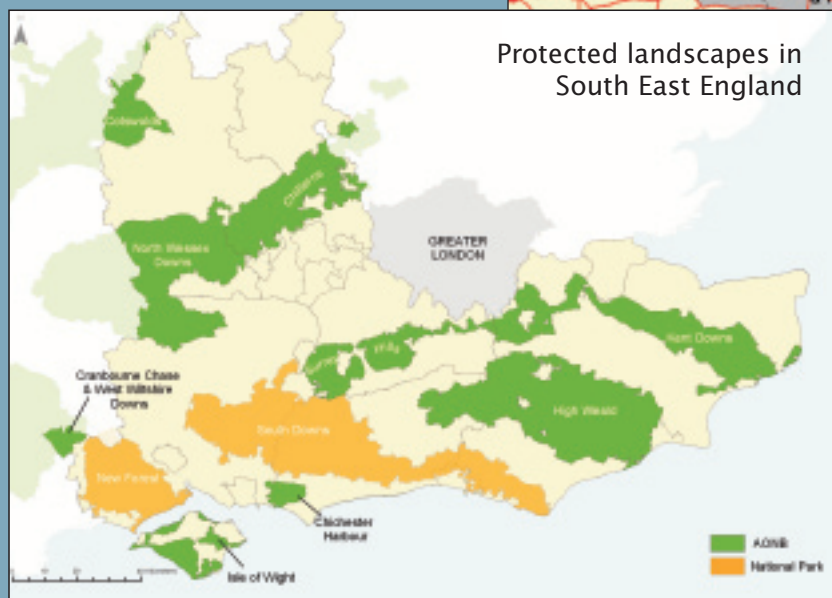
## High Weald AONB Unit

Woodland Enterprise Centre  
Hastings Road  
Flimwell  
East Sussex TN5 7PR  
T: 01580 879500  
F: 01580 879499  
E: [info@highweald.org](mailto:info@highweald.org)  
W: [www.highweald.org](http://www.highweald.org)

The annual review is published by the High Weald AONB Unit on behalf of the High Weald Joint Advisory Committee (JAC).



Reproduced from Ordnance Survey Mapping with the permission of the Controller of H.M. Stationery Office. Crown Copyright. Unauthorised reproduction infringes Crown Copyright and may lead to prosecution or civil proceedings.  
East Sussex County Council – 100019601, 2012; West Sussex County Council – 100018485; Kent County Council – 100019238; Surrey County Council – 100019613



Protected landscapes in South East England

Facts and figures about the High Weald can be found at  
**[www.highweald.org/home/about-aonbs/512-facts-and-figures.html](http://www.highweald.org/home/about-aonbs/512-facts-and-figures.html)**

Published by the High Weald Joint Advisory Committee July 2013.  
All pictures in the publication © High Weald JAC unless otherwise stated.